



LG Feature Phone L56vL Screen Replacement

Repair broken screen

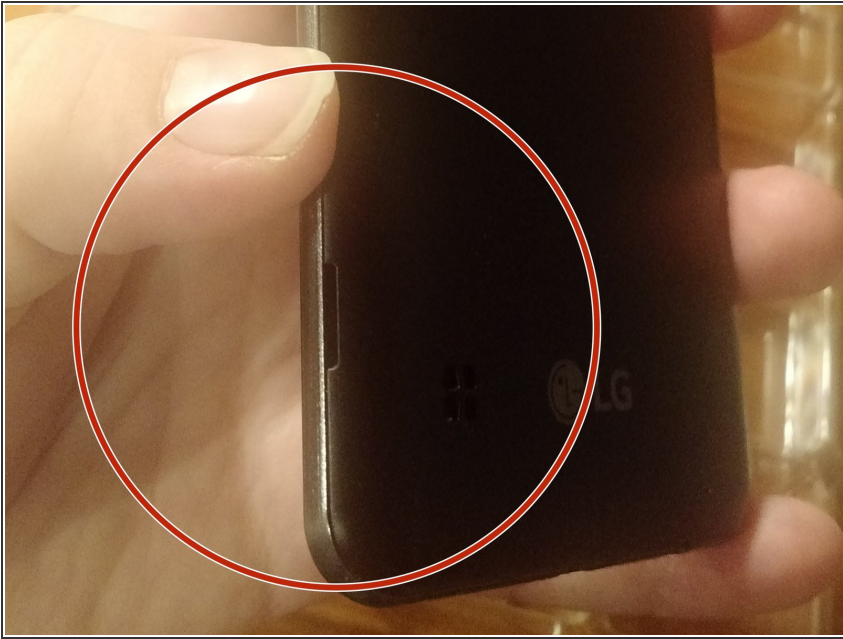
Written By: Katherine Weisbrod



 **TOOLS:**

- [Phillips #00 Screwdriver \(1\)](#)
-

Step 1 — Remove back cover



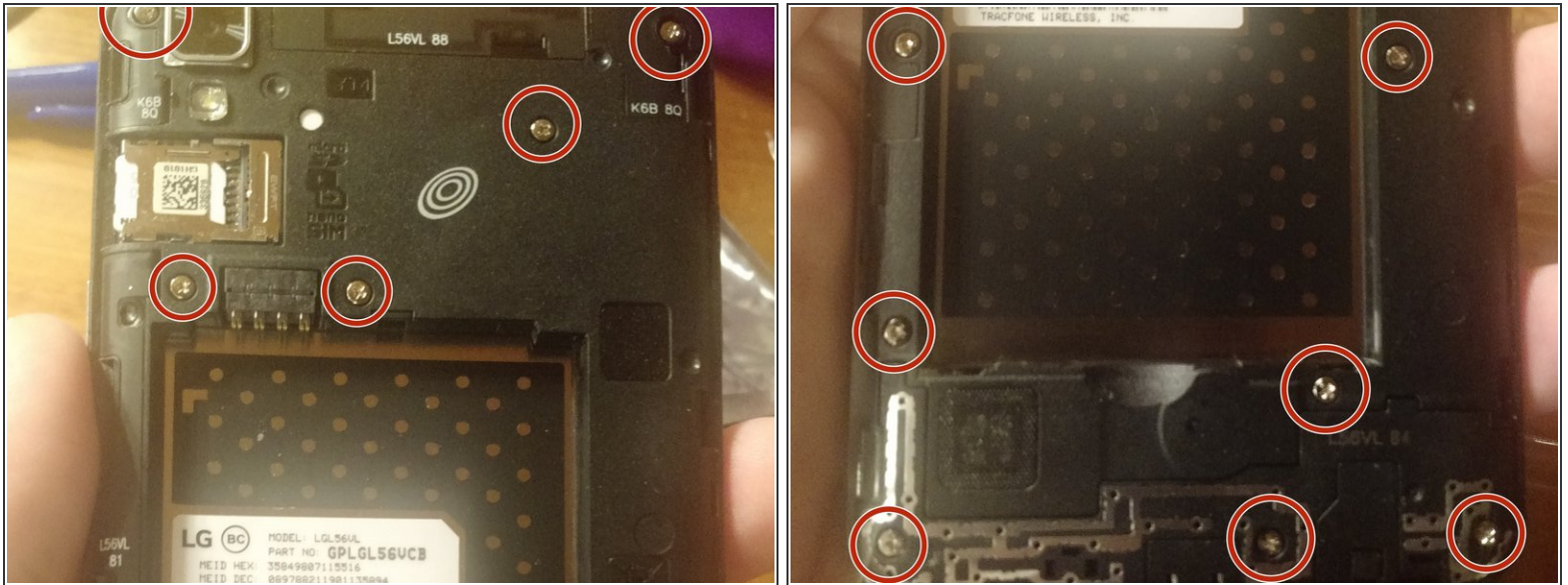
- Gently pry open back cover starting at the tab opening and gently working along the perimeter of the phone

Step 2 — Remove Battery



- Remove battery

Step 3



- Remove the 12 screws noting the order of each.

To reassemble your device, follow these instructions in reverse order.

This document was last generated on 2019-08-21 08:50:53 PM.