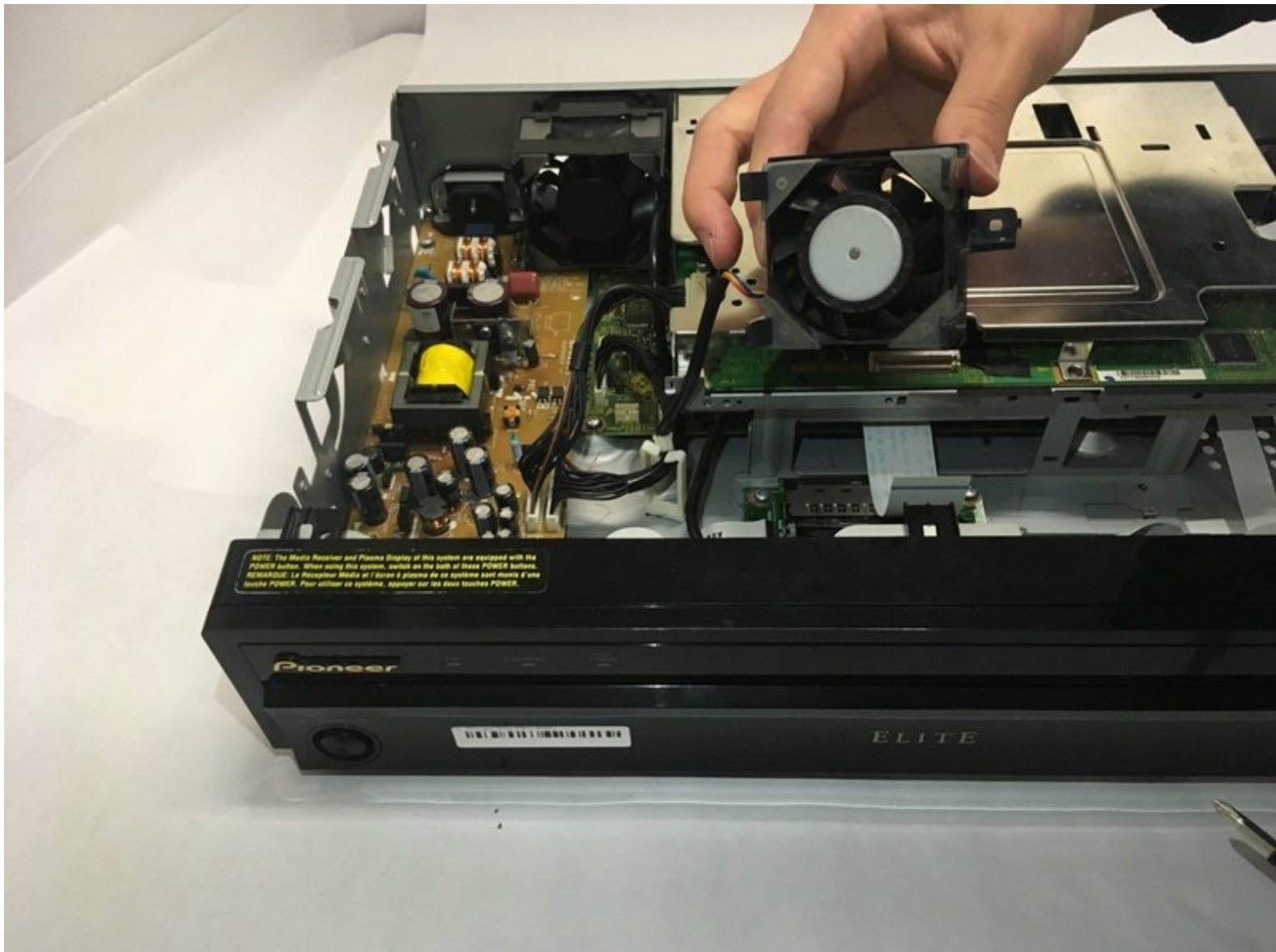




Pioneer Elite PRO-RO6U Cooling Fan Replacement

Replace a defective power supply cooling fan to prevent the media receiver from overheating.

Written By: Cody Carter



INTRODUCTION

Overheating can cause the Pioneer Elite PRO-R06U to unexpectedly shut off during operation. A broken

cooling fan will make it difficult for the media receiver to dissipate heat, and is the most likely cause of overheating. This guide will show you how to replace the power supply cooling fan.

TOOLS:

- [Phillips #1 Screwdriver](#) (1)
-

Step 1 — Power Supply Cooling Fan



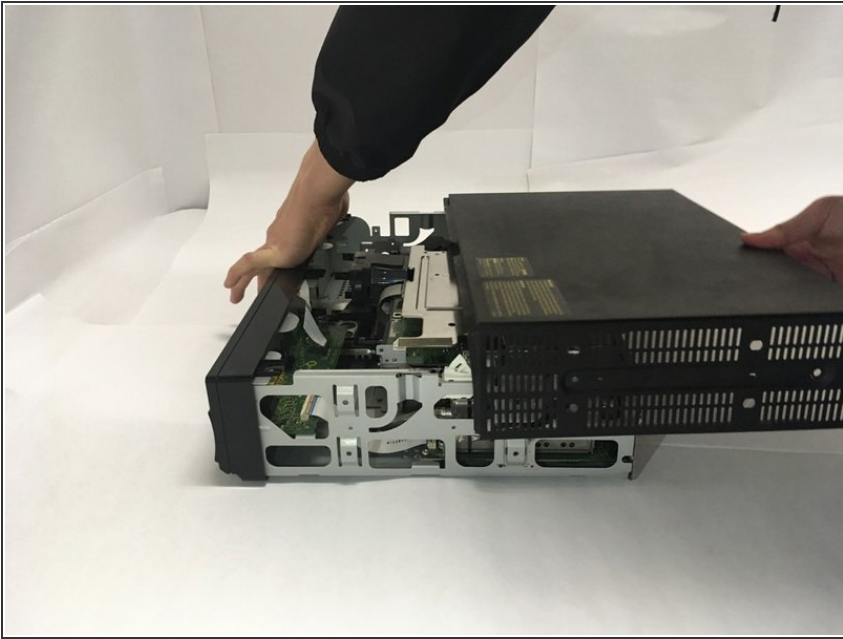
- Remove the two 6.4 mm Phillips screws on each side of the device's casing.

Step 2



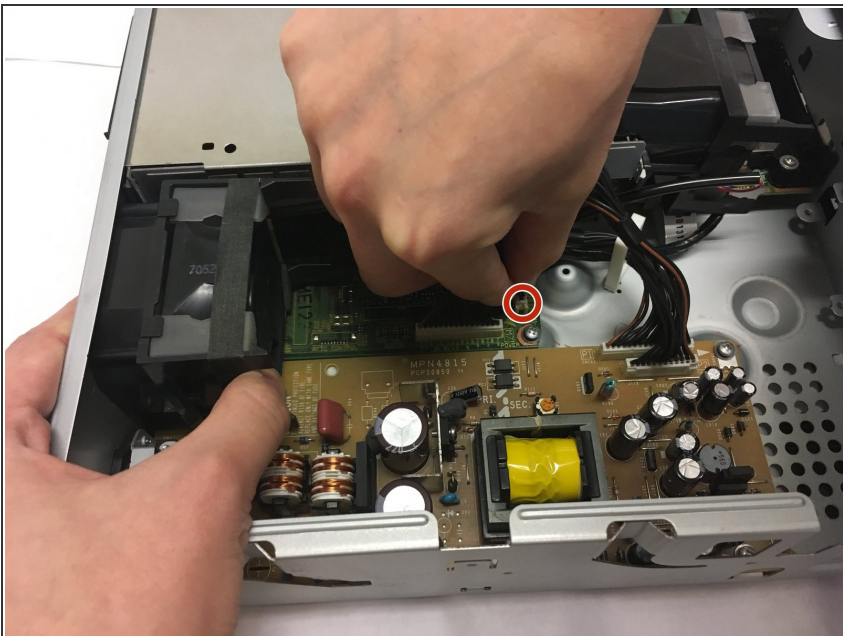
- Remove the two 6.5 mm Phillips screws on the back of the device casing.

Step 3



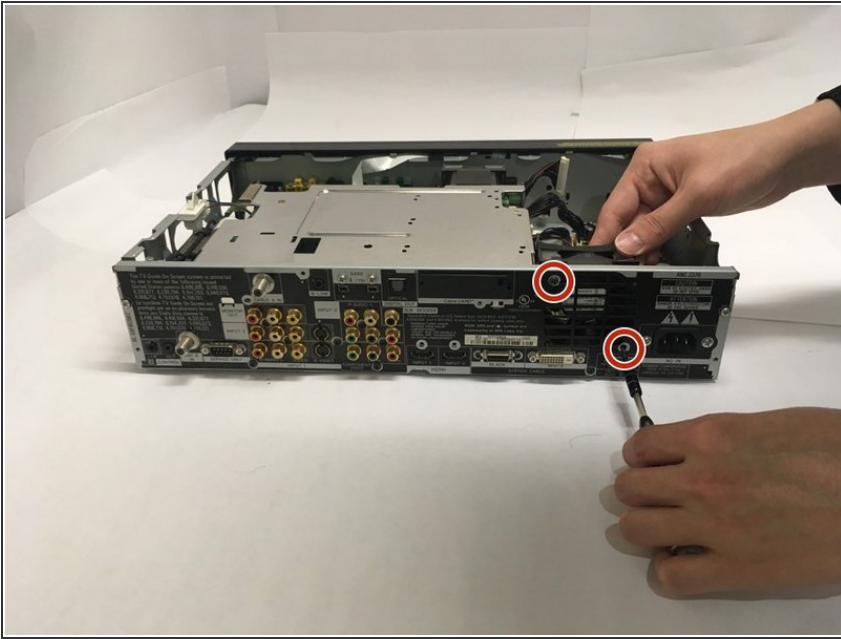
- Grip the front panel in one hand and the back of the casing in the other. Pull the casing back, and slide it up and away from the inner box.

Step 4



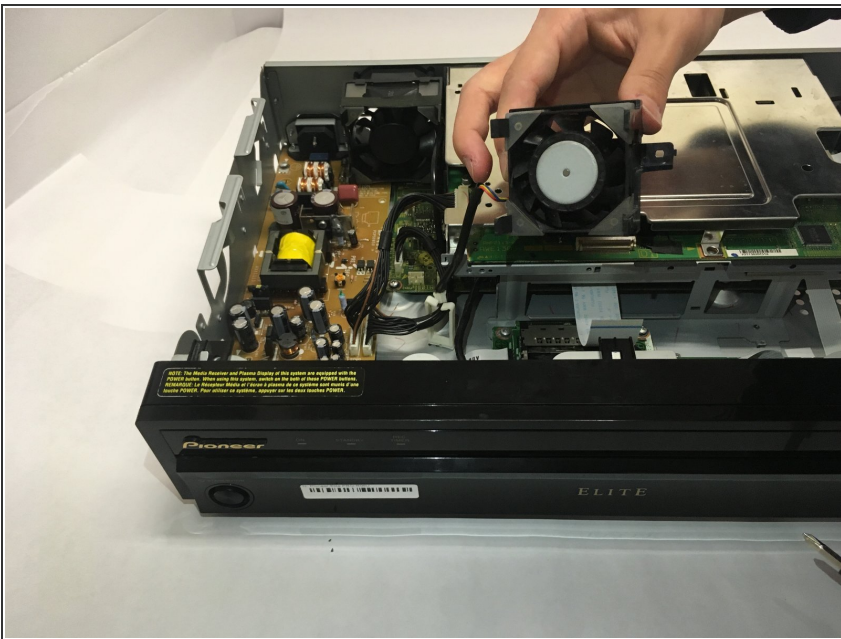
- To replace the back cooling fan, grip the ribbon connector at slot M10 and remove by gently pulling upward.

Step 5



- Remove the two 6.5 mm Phillips mounting screws at the back of the device.

Step 6



- Grip the frame of the cooling fan and slide away from the back wall until the tabs are no longer in the holes of the casing.
- Lift the cooling fan out of the device.

To reassemble your device, follow these instructions in reverse order.