



Dell Inspiron Mini 1012 Hard Drive Replacement

Removal and installation of bad hard drive with new one in Dell mini laptop.

Written By: Barrington Edman



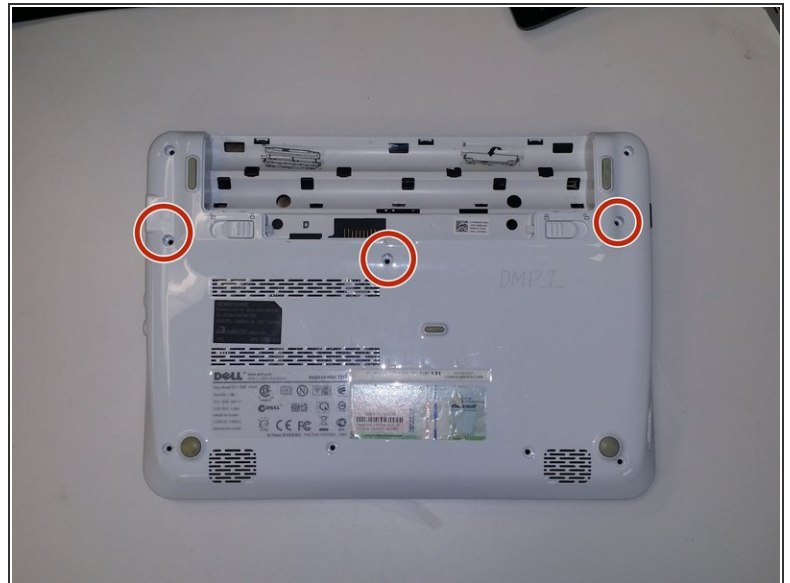
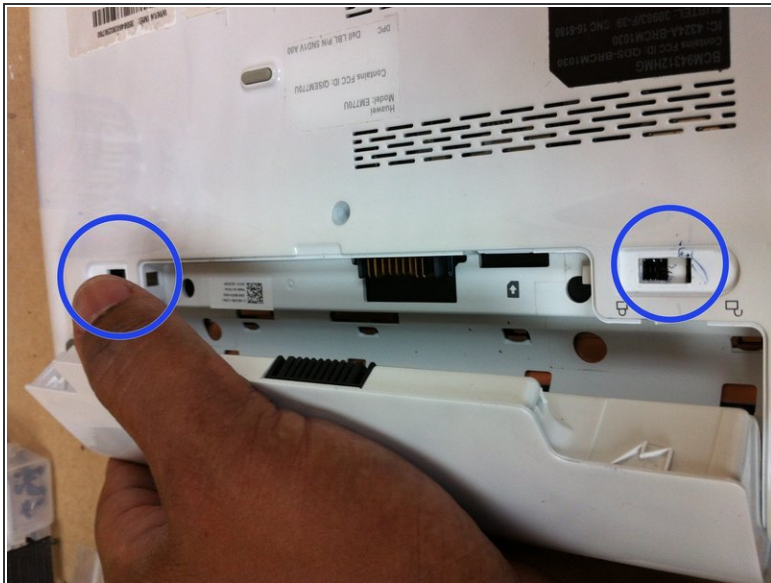
 **TOOLS:**

- [Phillips #2 Screwdriver](#) (1)
- [Metal Spudger](#) (1)
- [Spudger](#) (1)
- [Phillips #00 Screwdriver](#) (1)

 **PARTS:**

- [1 TB SSD / Upgrade Bundle](#) (1)
- [250 GB SSD / Upgrade Bundle](#) (1)
- [500 GB SSD / Upgrade Bundle](#) (1)
- [2 TB SSD / Upgrade Bundle](#) (1)

Step 1 — Hard Drive



- Turn the device over so that the back (white side) of the device is facing up.
- Remove battery from laptop by pushing the two tabs outward and pull the battery outward. The tabs are highlighted in blue. Place the battery off to the side.
- Remove the 3 screws highlighted in red that secure the keyboard to the case using the screw driver with largest phillips head in the box.
- Make sure to keep the screws separated by step to ensure that they can be put back in the correct location when reversing the steps.

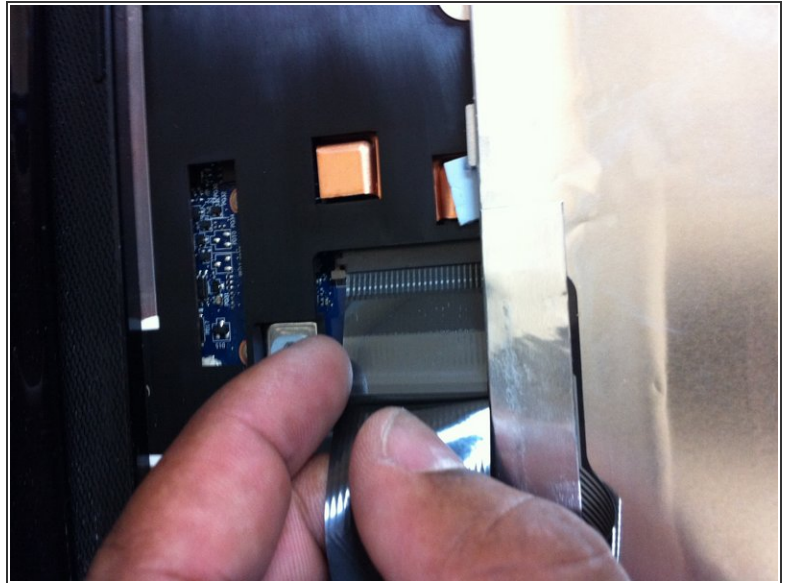
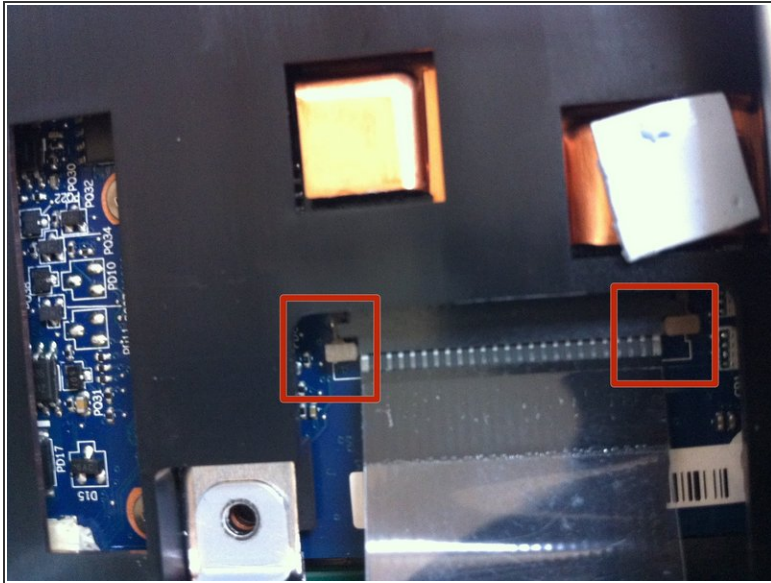
⚠ Notes about the reversal of steps will appear as a caution mark.

Step 2



- Turn the device right side up and open the device to view the keyboard.
- Remove the keyboard away from the case, using a plastic spudger if necessary.
- The keyboard will still be attached to the motherboard by a ribbon cable.

Step 3



- Pull the ribbon cable to release the keyboard.
 - If necessary push the release tabs highlighted in red with a plastic spudger, these secure the keyboard ribbon cable. Lay the keyboard face down off to the side of your work space.
- !** Be sure to lift up the release tabs that hold the ribbon in place, slide the ribbon in, and close the flap securing the ribbon in place. Lay the keyboard back down in its original location giving it a slight push to secure it in place.

Step 4



- Remove the 2 Phillips head screws securing hard drive to case. Use the same screw driver bit as before.
 - Pull the plastic tab connected to the hard drive outward in the left hand direction to remove hard drive from case. Place the hard drive off to the side.
- ⚠ When putting the hard drive back slide it in to the space so that the screw holes line up and press down until there is a snug fit.

To reassemble your device, follow these instructions in reverse order.