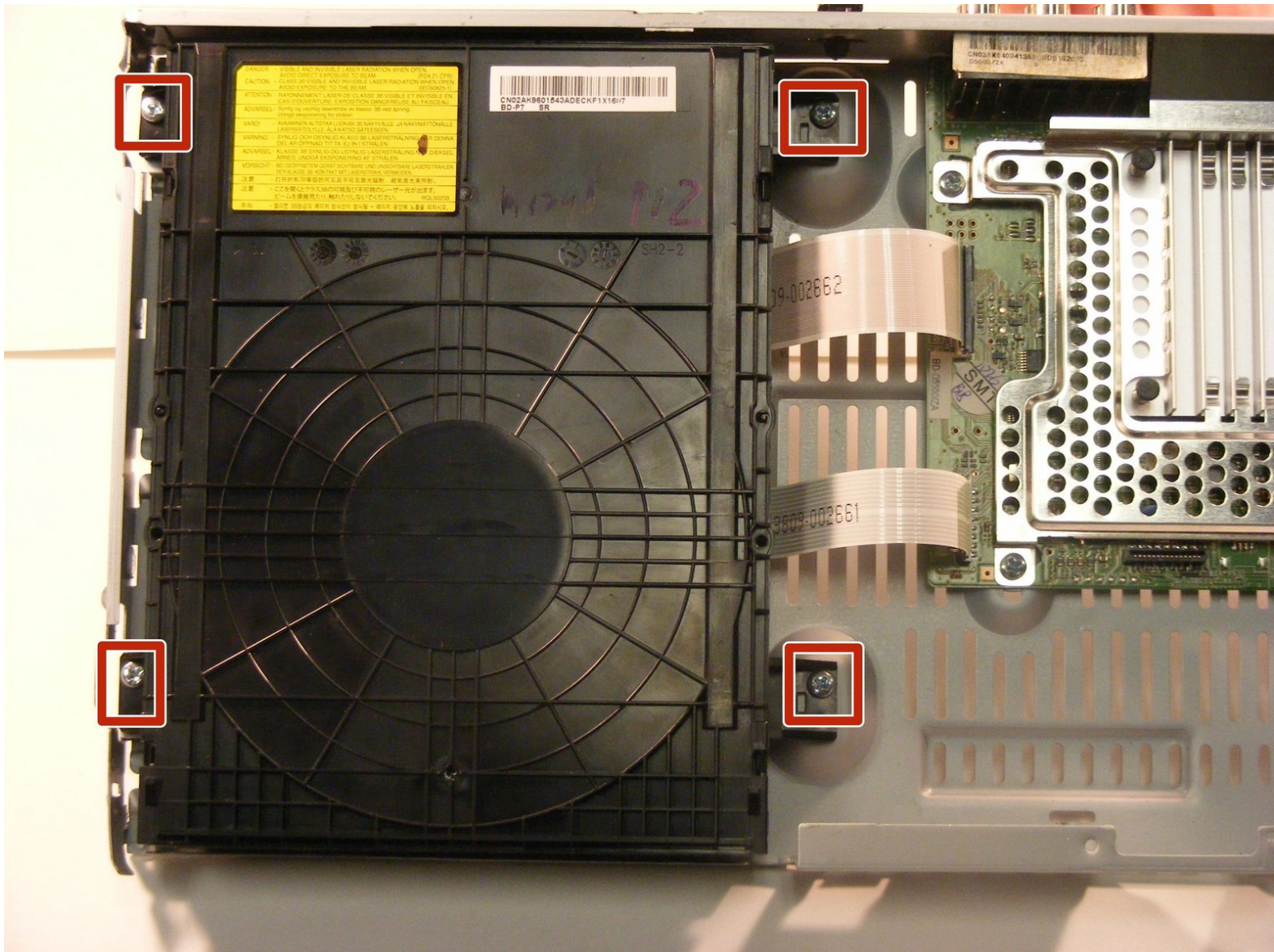




# Samsung BD-D5500 Disc Tray Replacement

This guide will successfully show you how to replace the disc tray of the Samsung BD-D5500.

Written By: Brandon Nelson



---

## INTRODUCTION

This is a replacement guide for the Samsung BD-D5500 Blu-ray player. This guide will personally give you the information you need to replace the disc tray of the device. This is a very easy and simple process.

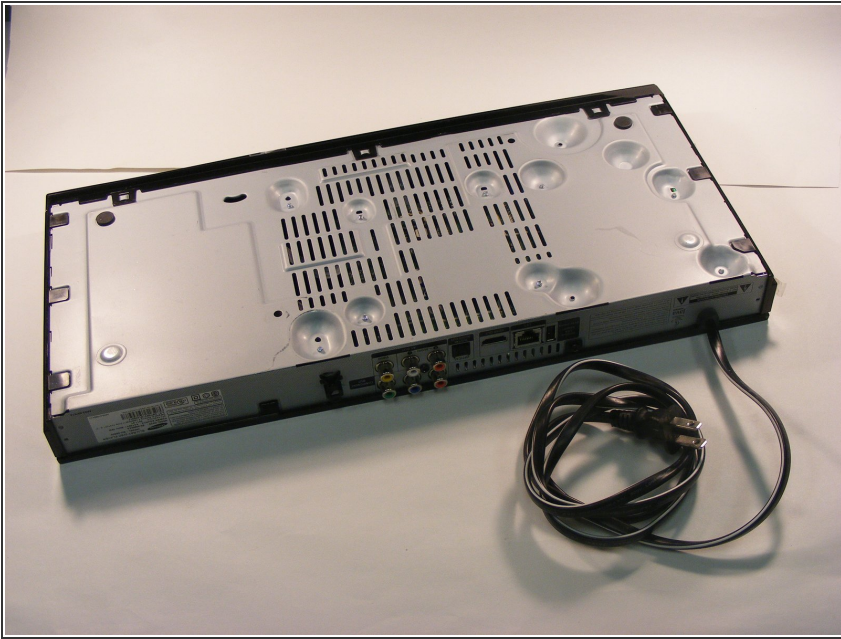
---

### TOOLS:

- [iFixit Opening Tools](#) (1)
  - [Phillips #2 Screwdriver](#) (1)
-

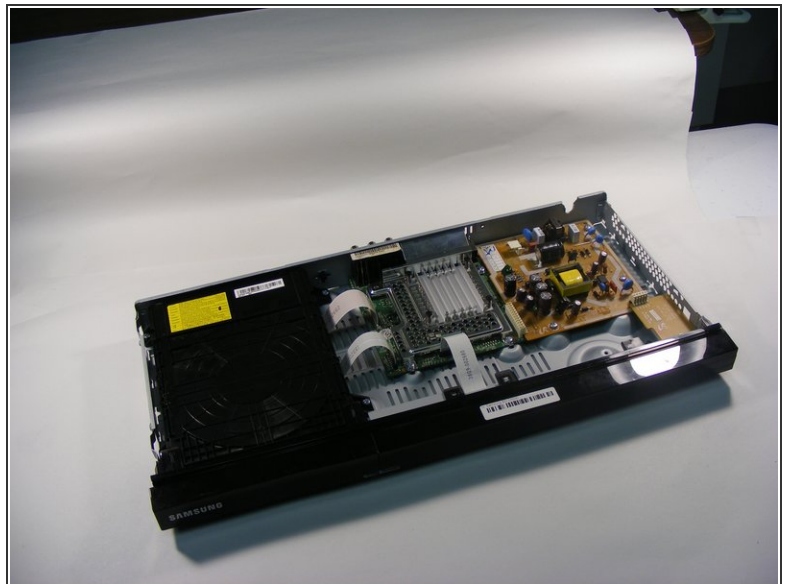


## Step 1 — Samsung BD-D5500 Disassembly



- To begin, turn the device over so that the bottom is facing up. There are 9 black clips that attach the plastic body to the case. Remove these clips from the case.

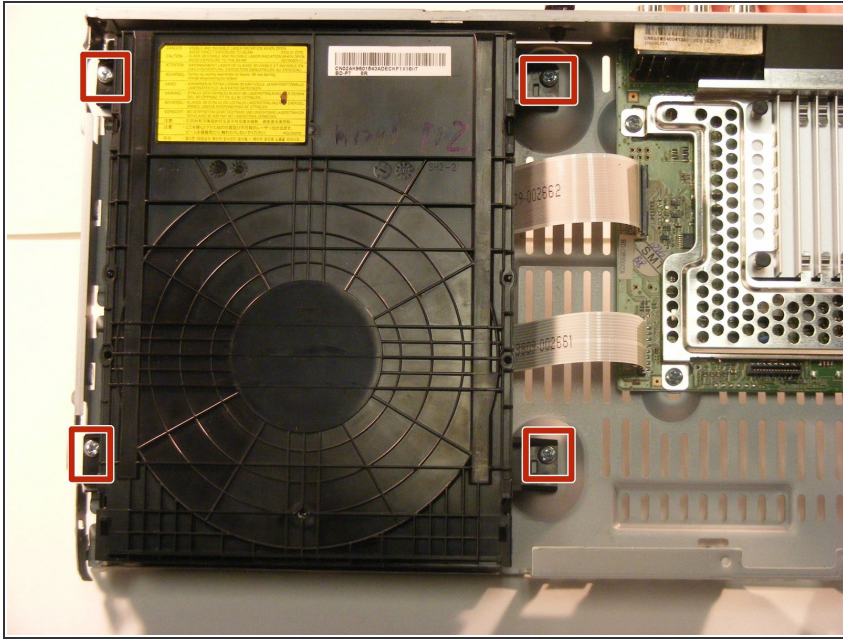
## Step 2



- Use a Phillips #2 screwdriver to remove the screw that attaches the top cover to the rear of the device. This will allow you to remove the cover.

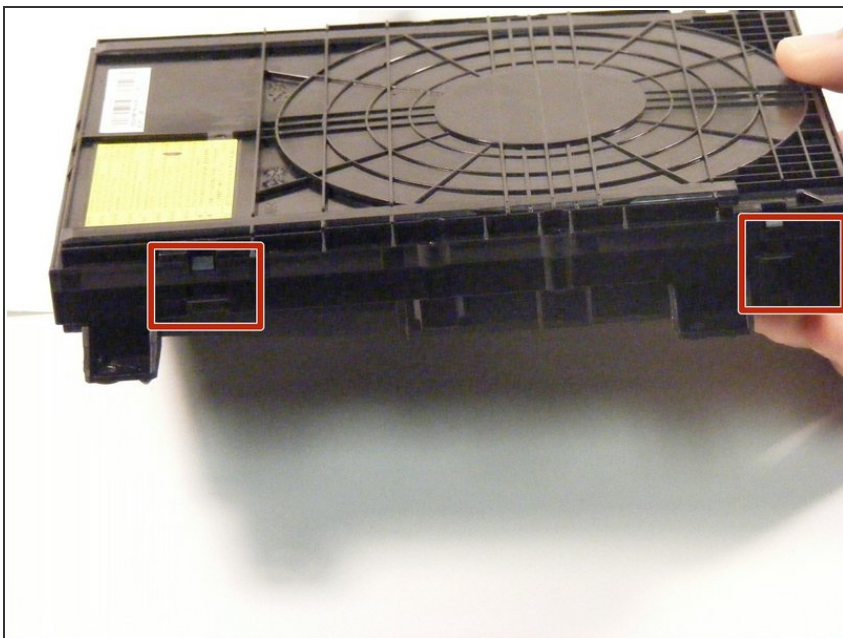
**i** This is how your device will look after you remove the top.

### Step 3 — Disc Tray



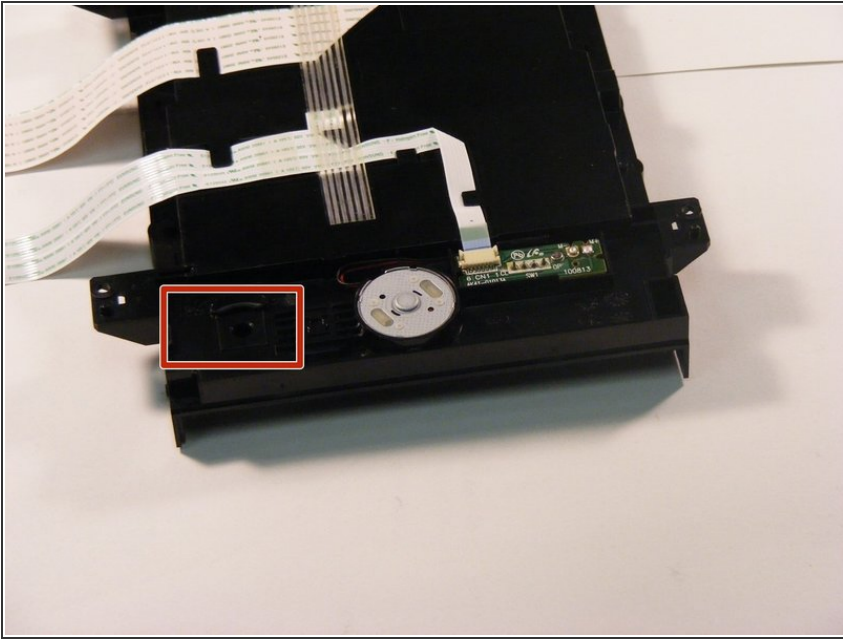
- To remove the disc hub all you have to do is remove the 4 screws holding it down.

### Step 4



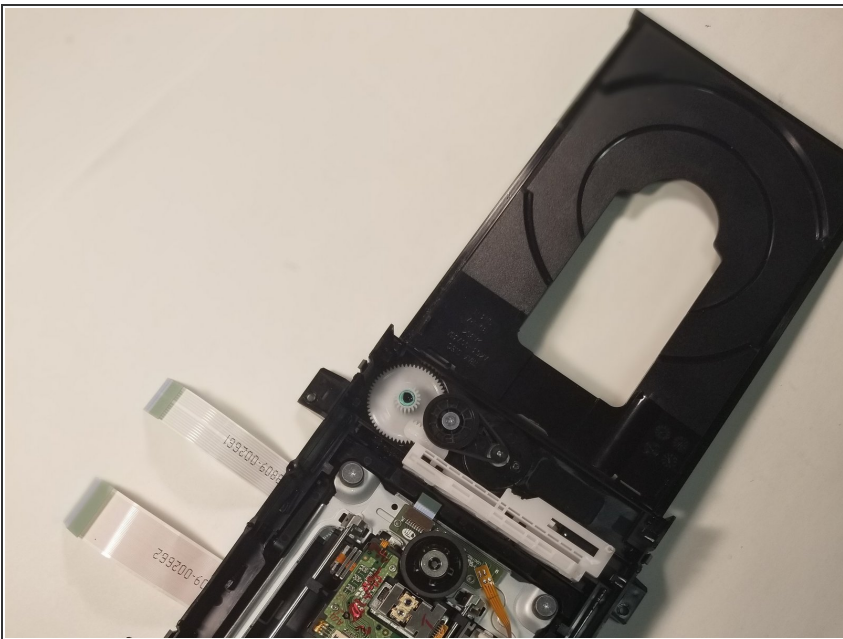
- To replace the disc tray open the disk hub and unsnap the sides of the device.

## Step 5



- Locate the slider that reads open and close.
- To open the disc tray slide it to the side that says open.

## Step 6



- Return it face up and the disc tray will slide out.

To reassemble your device, follow these instructions in reverse order.