



Brightsign 4k Outer Shell Replacement

Replace outer shell to get into the hardware within the Brightsign 4k. This will allow access to the necessary components needed to replace different parts.

Written By: Zackery



INTRODUCTION

This guide will take you through the process of removing the motherboard of the device in order to get access to components located underneath.

TOOLS:

- [JIS #0 Screwdriver](#) (1)
 - [54 Bit Driver Kit](#) (1)
-

Step 1 — Outer Shell



- Remove three 8mm screws from the left side of the device.
- Remove four 8mm screws from the right side of the device.

Step 2



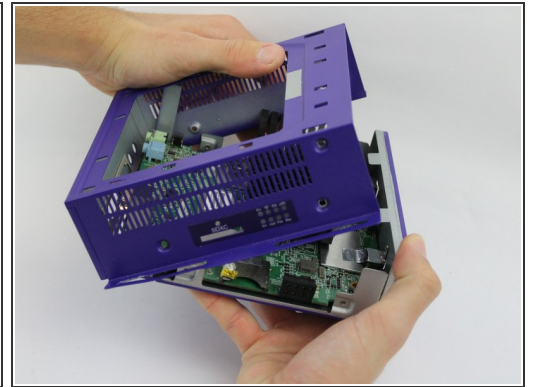
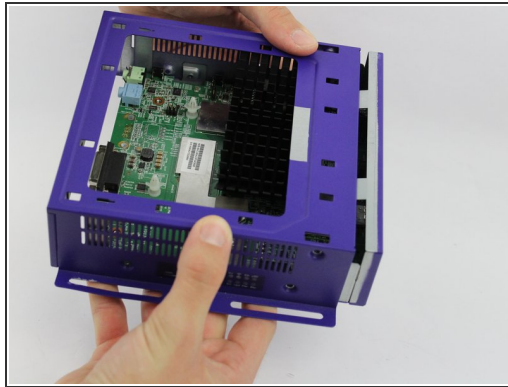
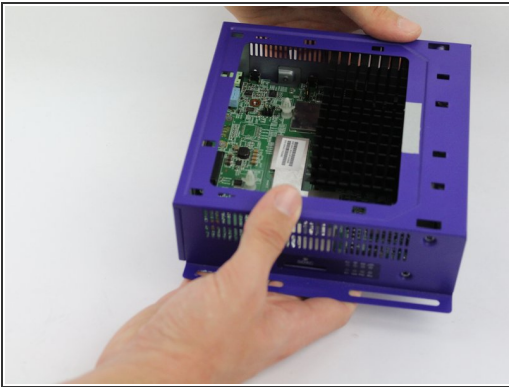
- Apply pressure on the SD card to pop it out of the port.
- Remove the card by pulling it out.

Step 3



- Press down on the top cover of the device and slid it towards you until you see a slight gap created.
- Lift the top cover off.

Step 4



- Slide the body case back away from the bottom.
- Pull up the body case to remove it from the bottom.

To reassemble your device, follow these instructions in reverse order.

This document was last generated on 2019-08-03 12:11:13 PM.