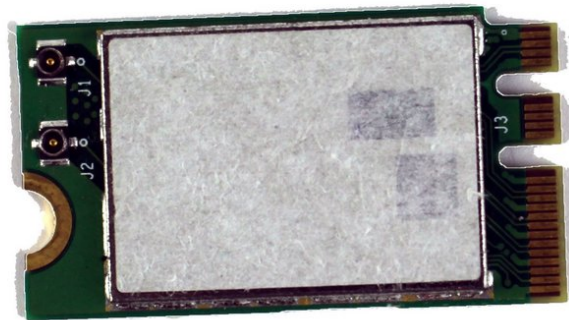




Asus Transformer Flip Book TP200S WiFi Card Replacement

This guide will provide the steps to replacing the WiFi Card in your flip book.

Written By: Alejandro Lopez



INTRODUCTION

Are you unable to connect to any WiFi connection? If so, then you might be experiencing a faulty WiFi card. This guide will take you through all the steps required to replace your Asus Flip Book WiFi card.

TOOLS:

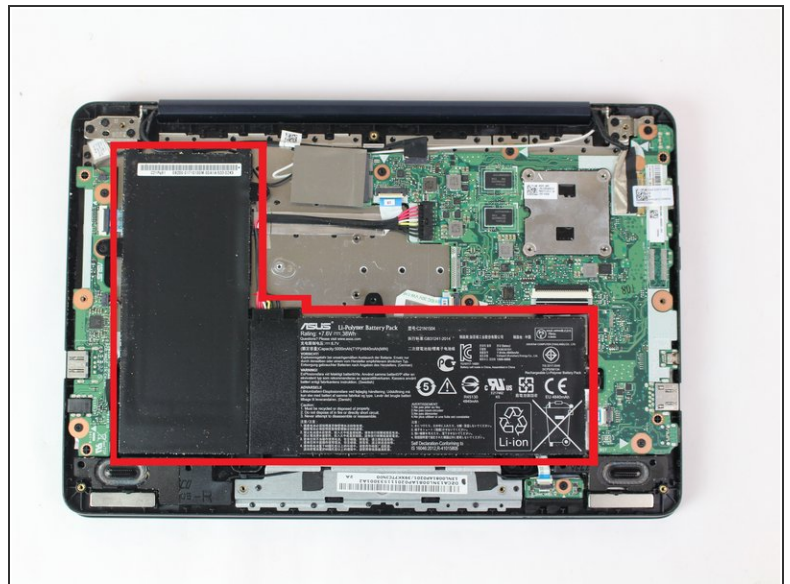
- [JIS #000 Screwdriver](#) (1)
 - [Metal Spudger](#) (1)
 - [Tweezers](#) (1)
-

Step 1 — Battery



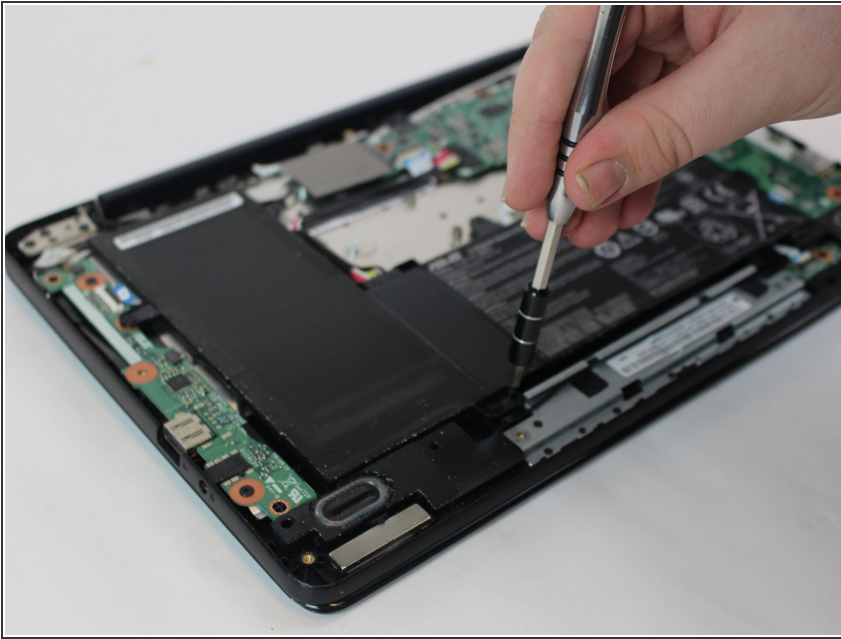
- Remove the back 6mm and 8mm screws with a J000 screwdriver.

Step 2



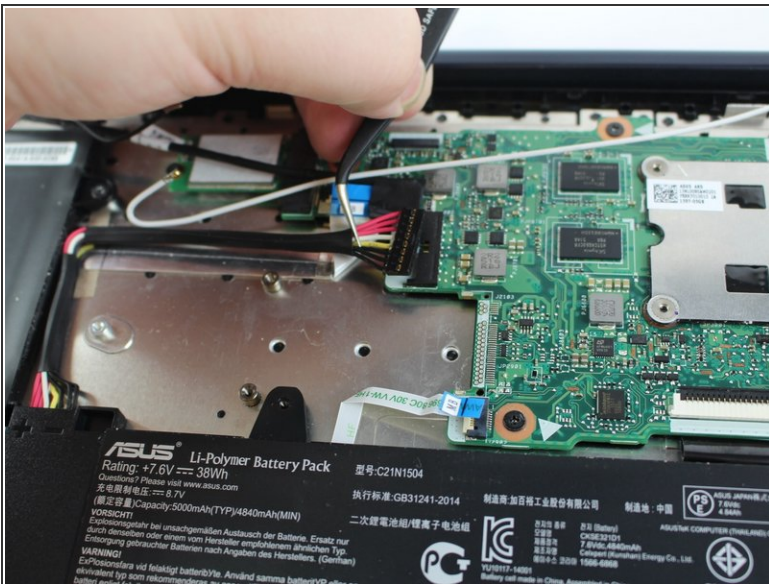
- Remove the back cover of the flip book by gently using a metal spudger.

Step 3



- Unscrew the battery from the motherboard using a J000 screwdriver on the 3mm screws.

Step 4



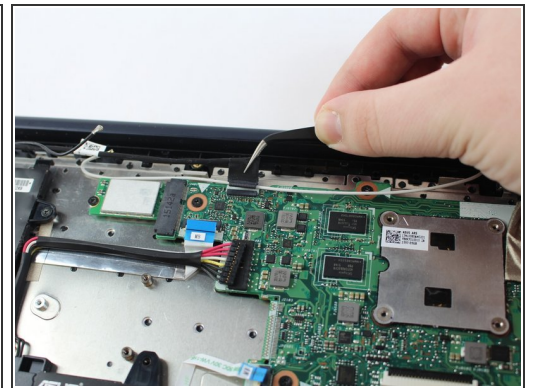
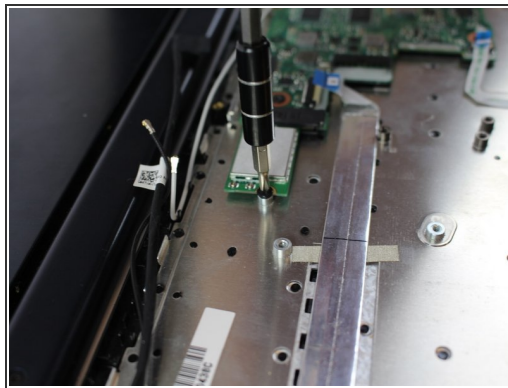
- The battery comes attached to the motherboard and needs to be disconnected before you can remove it.
- Disconnect the battery from the motherboard by gently pulling out the connection with tweezers.

Step 5 — WiFi Card



- ⓘ The WiFi card will be covered by tape and attached to the motherboard.
- Remove the tape from the WiFi card.

Step 6



- Unscrew the WiFi card with a JIS #000 screwdriver.
- Remove the motherboard connection from the WiFi card with tweezers.
- Pull out the WiFi card.

To reassemble your device, follow these instructions in reverse order.

This document was last generated on 2019-08-07 11:42:39 AM.