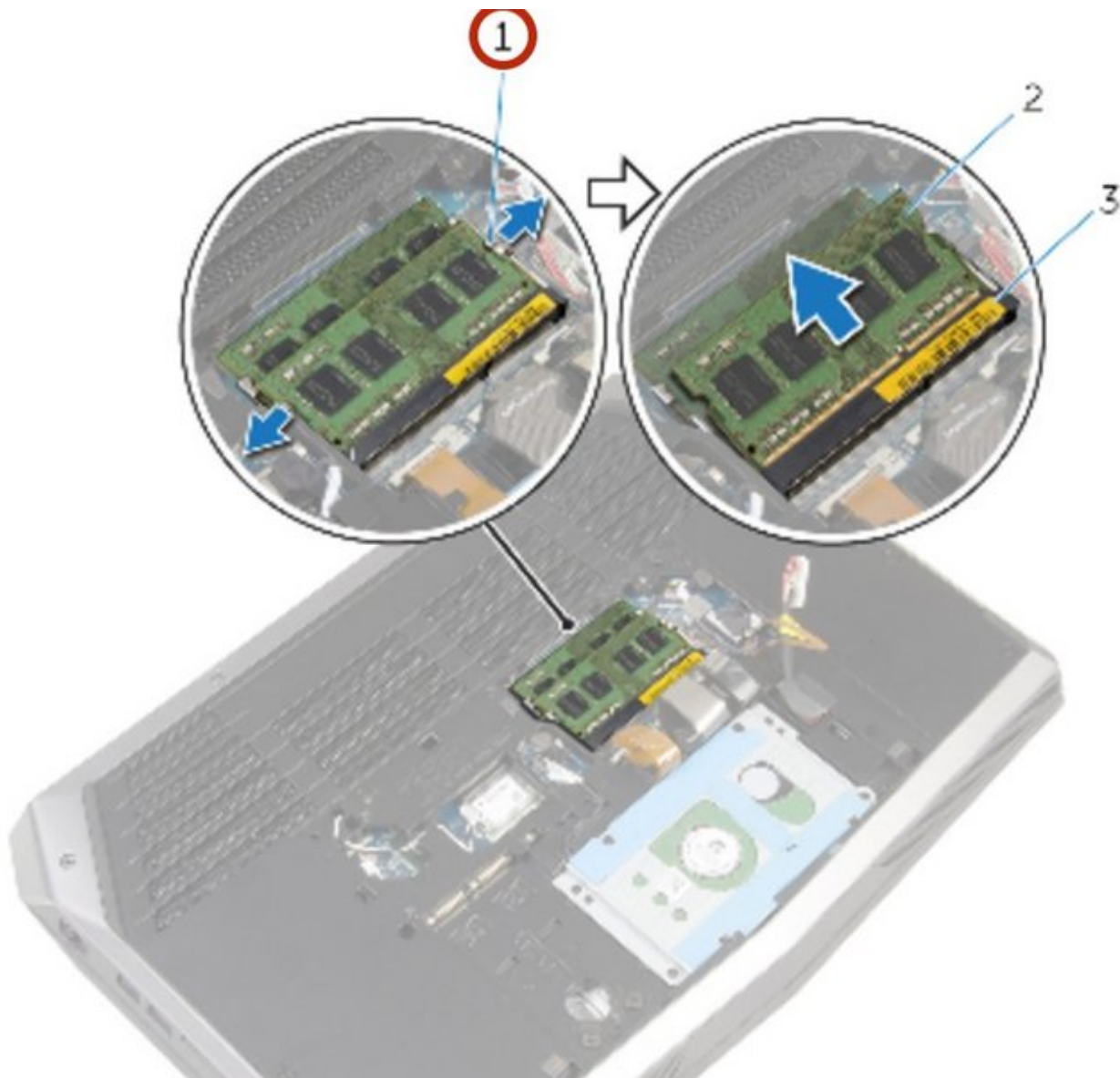




Dell Alienware 15 Memory Module Replacement

How to remove and replace the two DDR3L memory modules of an Alienware 15.

Written By: Johnathan Hammond



INTRODUCTION

In this guide, we will be showing you how to remove and replace the Memory Modules.

TOOLS:

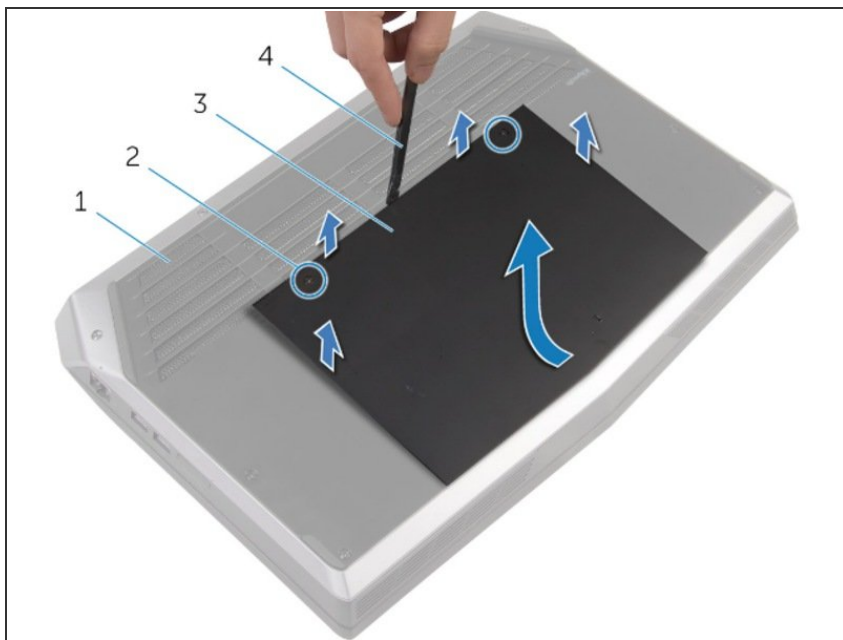
- [Phillips #0 Screwdriver](#) (1)
 - [Spudger](#) (1)
-

Step 1 — Turn Off and Turn Over the Computer



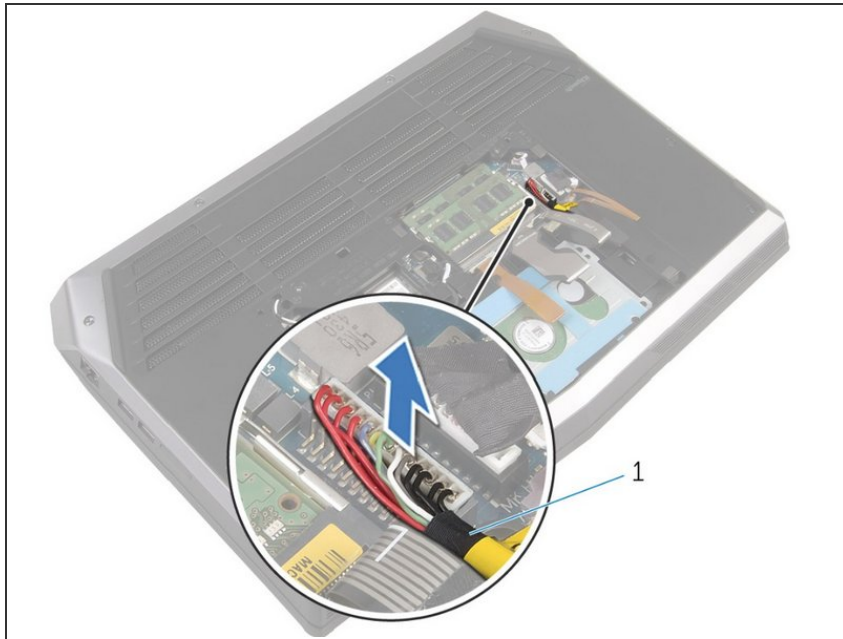
- After turning the computer off, close the display and turn the computer over.

Step 2 — Remove the Back Panel Screws and Lift



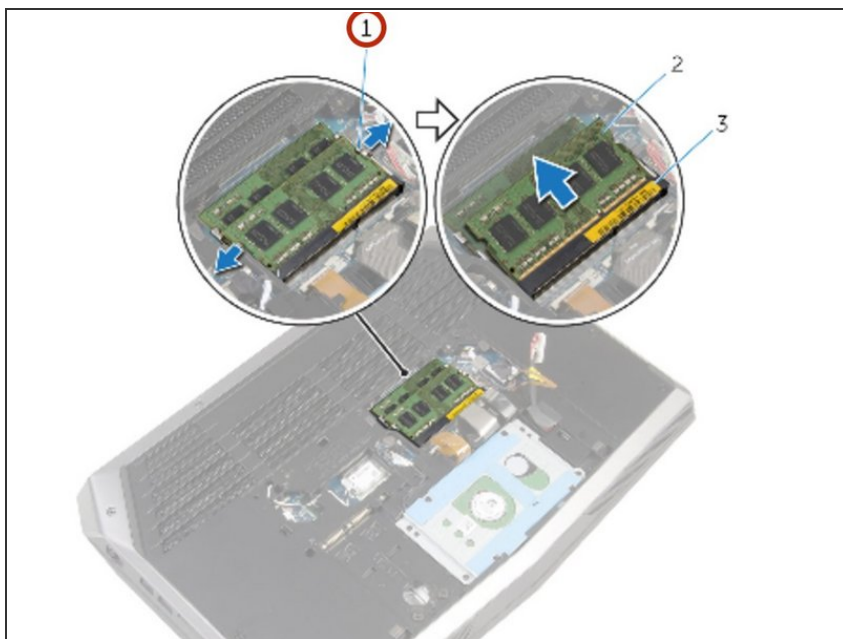
- After the computer base (#1) is facing up, use a Philips screwdriver to remove the two captive screws (#2) which hold the base panel (#3) down.
- Then, use a spudger (#4) to lift up the panel. You can also use your fingernail to lift it as well.
- After the front has been lifted up a bit, the non-screw side of the panel will need to be slid forward a little to finish lifting out the base panel from the computer.

Step 3 — Optional: Disconnect the Battery



- i You don't need to disconnect the laptop's battery if you are only replacing the back panel: only perform this step if you will be handling or replacing the electrical components of the computer.
- Disconnect the battery cable from the system board by pulling up on the battery connector (#1).
- Turn the computer back over and open the display to the point where you can press the power button.
- Press and hold the power button for 4 seconds to ground the system board so that you can safely remove components such as the RAM.

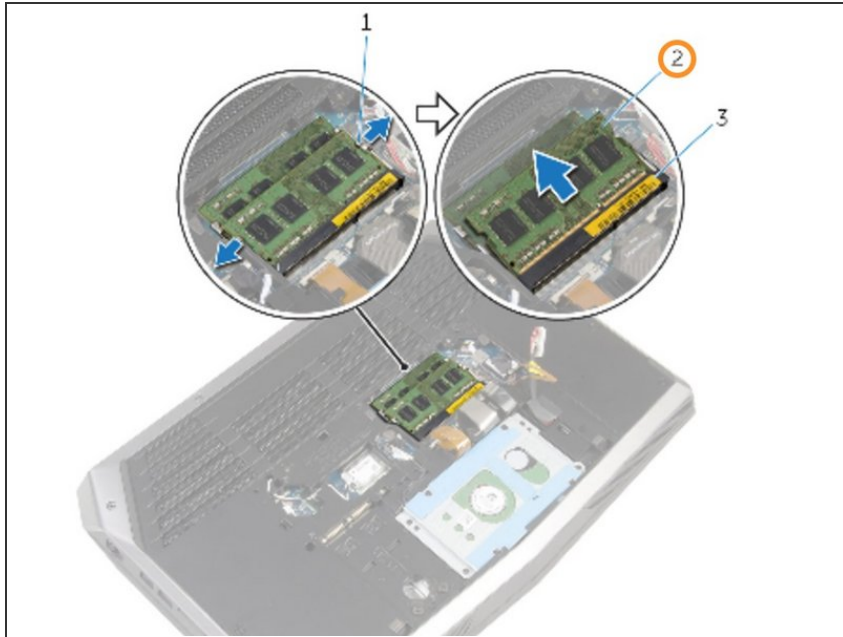
Step 4 — Memory Securing Clips



- ⚠ **WARNING:** Before working inside your computer, read the safety information that shipped with your computer and follow the steps in [Before Working Inside Your Computer](#). After working inside your computer, follow the instructions in [After Working Inside Your Computer](#).

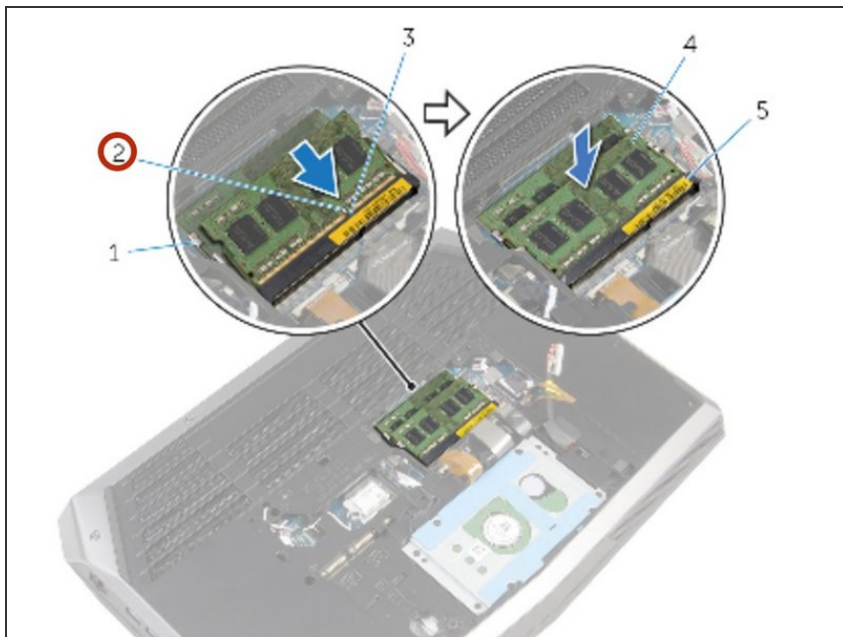
- Using your fingertips, carefully spread apart the securing clips on each end of the memory-module slot until the memory module pops up.

Step 5 — Remove Memory Module



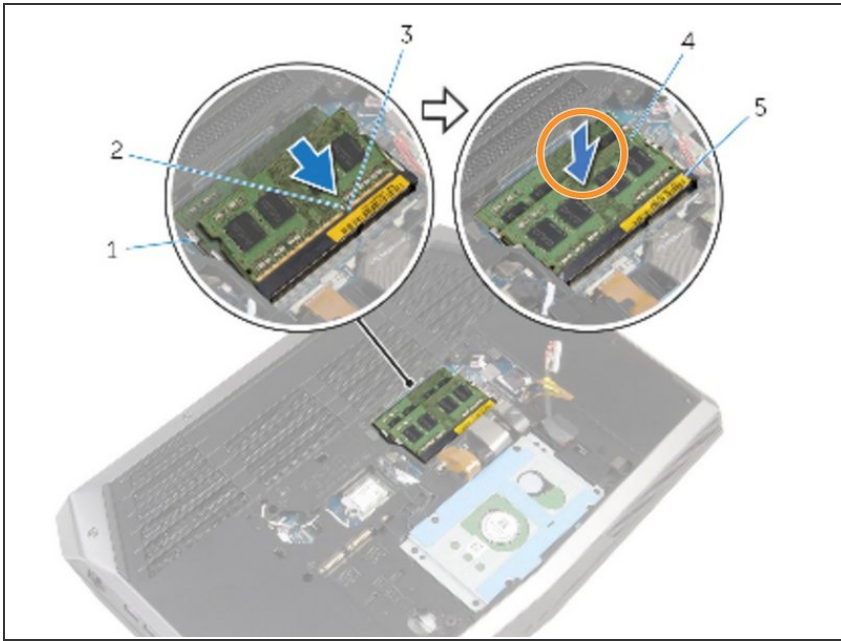
- Slide and remove the memory module from any memory-module slots that you would like to repopulate.

Step 6 — Adding New Memory Module



- Align the notch on the **New** memory module with the tab on the memory-module slot.

Step 7 — Firmly Press the Memory Module Down.



- Slide the memory module firmly into the slot at an angle and press the memory module down until it clicks into place. Do this individually for each memory module that is replaced.
- ⓘ NOTE : If you do not hear the click, remove the memory module and reinstall it.

To reassemble your device, screw the base panel on again.

This document was last generated on 2019-07-24 03:02:53 AM.