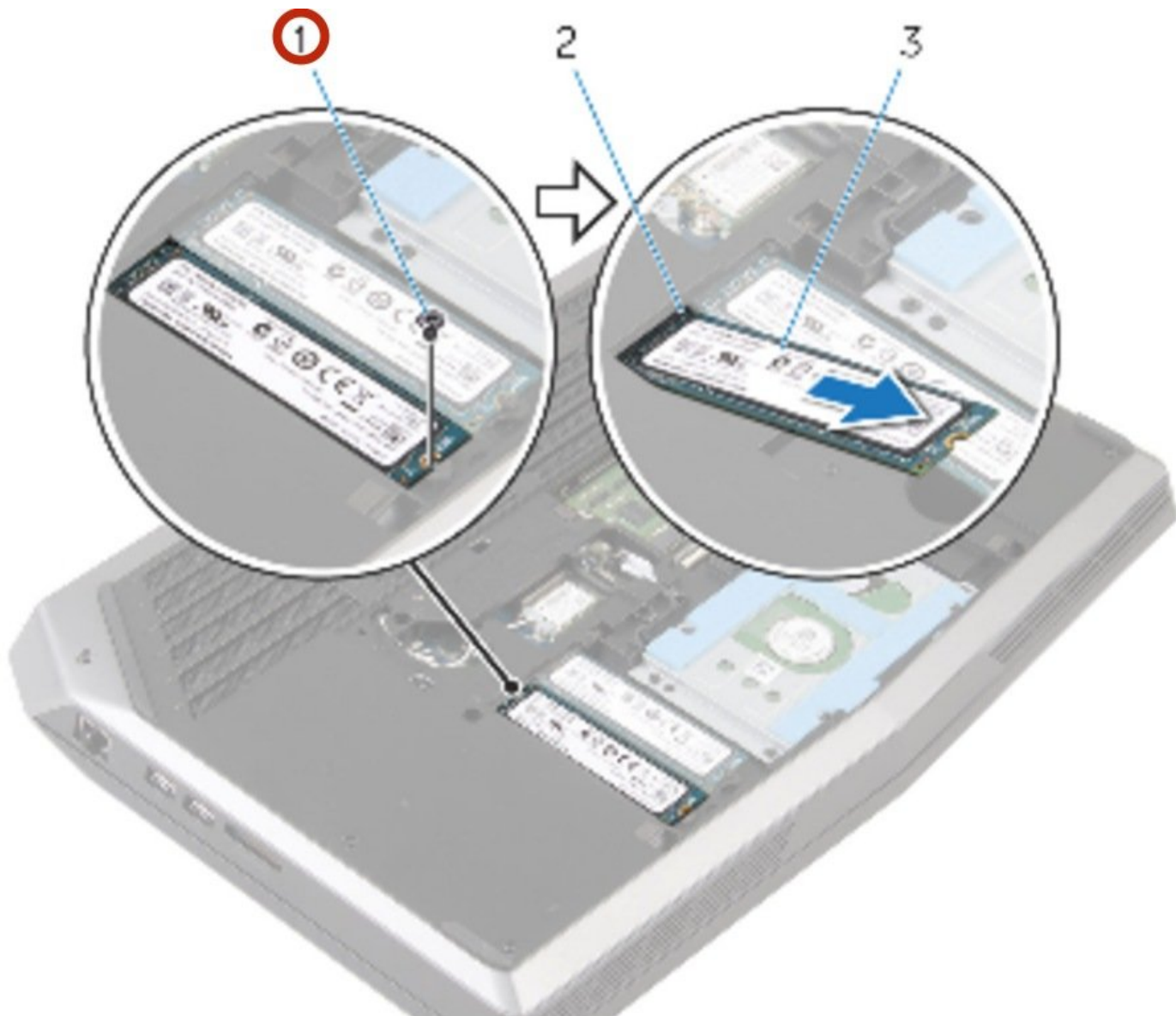




# Alienware 15 M.2 Solid State Drive

How to remove and replace the M.2 solid state drives in the Alienware 15.

Written By: Johnathan Hammond



---

## INTRODUCTION

In this guide, we will be showing you how to remove and replace the Solid-State Drive.

---

### TOOLS:

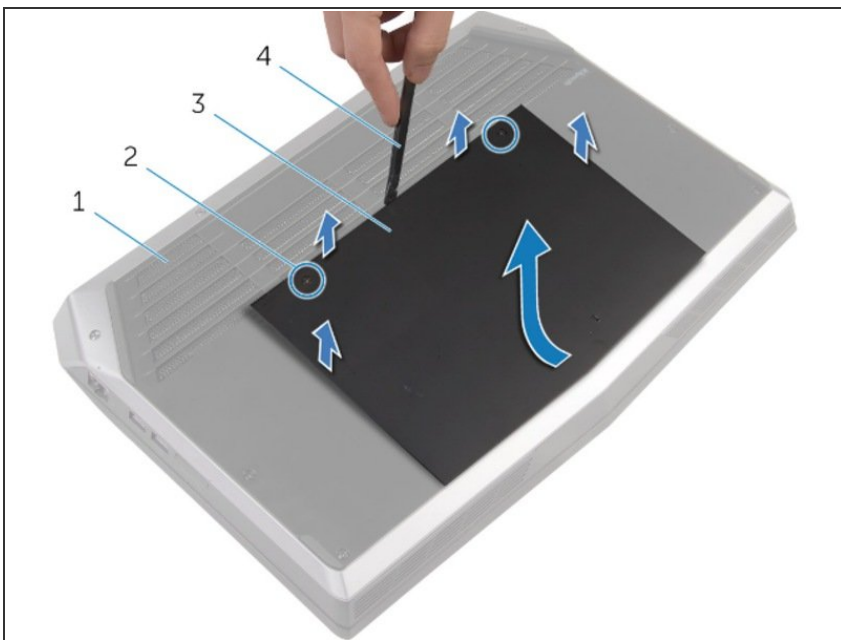
- [Spudger](#) (1)
  - [Phillips #0 Screwdriver](#) (1)
-

## Step 1 — Turn Off and Turn Over the Computer



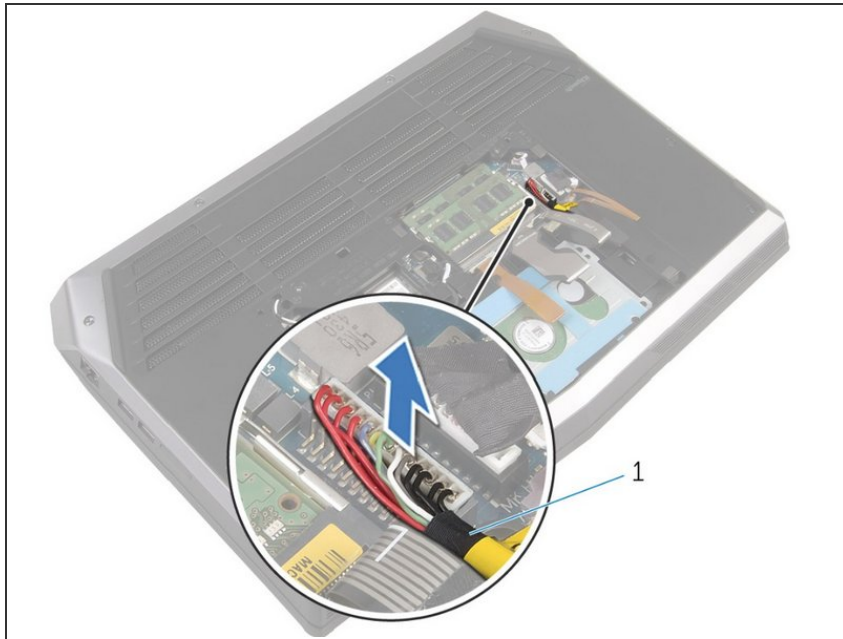
- After turning the computer off, close the display and turn the computer over.

## Step 2 — Remove the Back Panel Screws and Lift



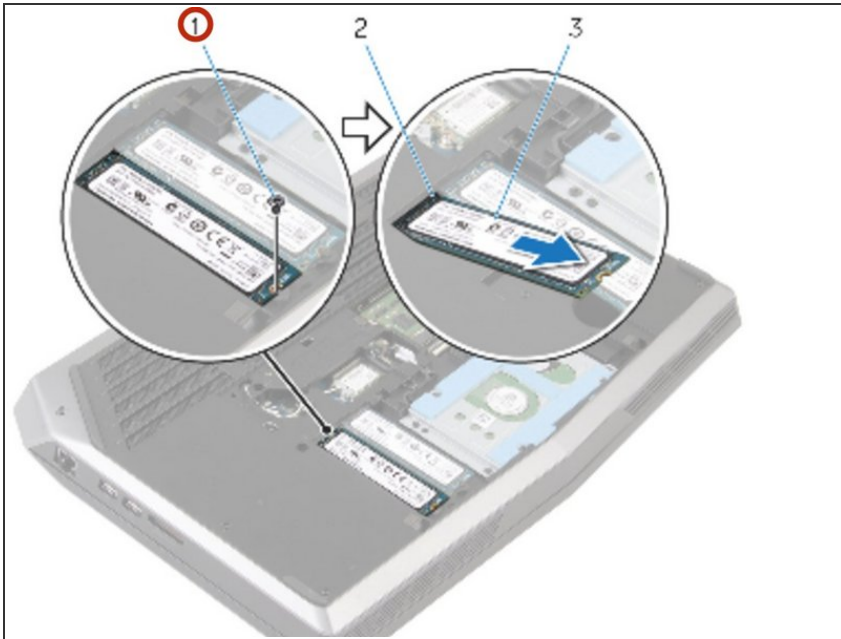
- After the computer base (#1) is facing up, use a Philips screwdriver to remove the two captive screws (#2) which hold the base panel (#3) down.
- Then, use a spudger (#4) to lift up the panel. You can also use your fingernail to lift it as well.
- After the front has been lifted up a bit, the non-screw side of the panel will need to be slid forward a little to finish lifting out the base panel from the computer.

### Step 3 — Optional: Disconnect the Battery



- i** You don't need to disconnect the laptop's battery if you are only replacing the back panel: only perform this step if you will be handling or replacing the electrical components of the computer.
- Disconnect the battery cable from the system board by pulling up on the battery connector (#1).
- Turn the computer back over and open the display to the point where you can press the power button.
- Press and hold the power button for 4 seconds to ground the system board so that you can safely remove components such as the RAM.

## Step 4 — Remove Solid-State screw



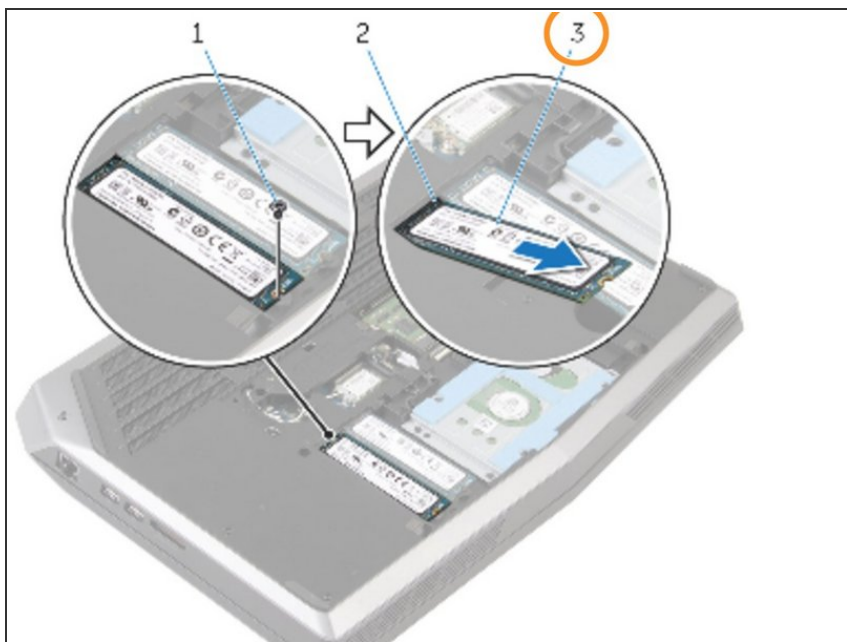
**⚠ WARNING:** Before working inside your computer, read the safety information that shipped with your computer and follow the steps in [Before Working Inside Your Computer](#). After working inside your computer, follow the instructions in [After Working Inside Your Computer](#).

**⚠ CAUTION :** Solid-state drives are fragile. Exercise care when handling the solid-state drives, and avoid touching the gold contact pins.

**⚠ CAUTION :** To avoid data loss, do not remove the solid-state drive while the computer is in sleep or on state.

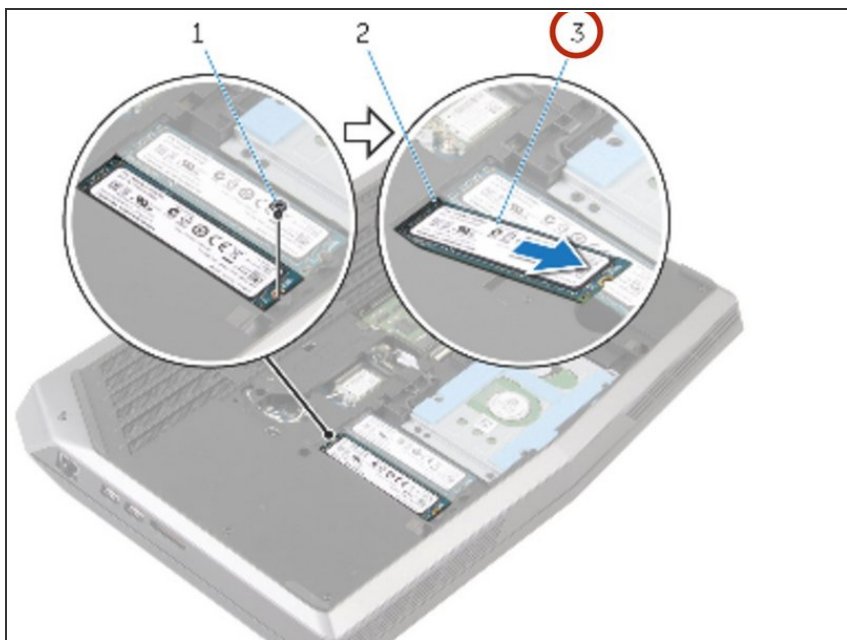
- Remove the screw that secures the solid-state drive to the computer base.

## Step 5 — Slide the Solid-State Drive



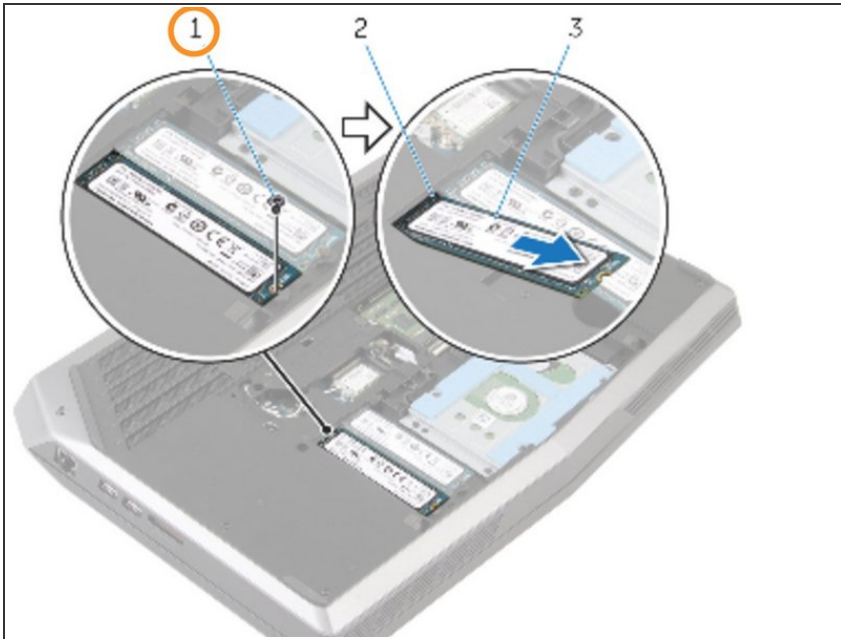
- Slide and remove the solid-state drive from the solid-state drive slot.

## Step 6 — Slide the Solid-state Drive



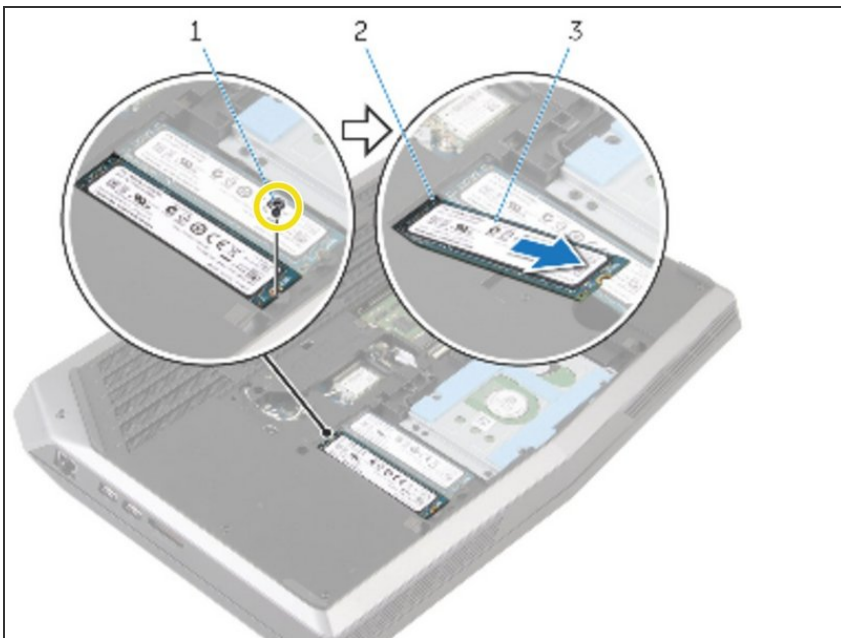
- Slide the solid-state drive into the solid-state drive slot.

## Step 7 — Align the screw



- Align the screw hole on the solid-state drive with the screw hole on the computer base.

## Step 8 — Replace the Screw



- Replace the screw that secures the solid-state drive to the computer base.

To reassemble your device, screw the base panel on again.