



# Ring Video Doorbell Housing Replacement

Replace the Housing of the Ring Video Doorbell if any damage has occurred to it.

Written By: Abdulrahman



## INTRODUCTION

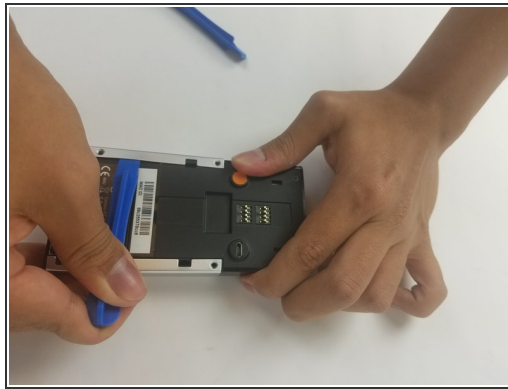
In this guide, you will be shown how to take apart and replace the Housing unit of the Ring Video Doorbell step-by-step. You will need a Phillips screwdriver size PH00 and a Plastic Tool Opener.

---

### TOOLS:

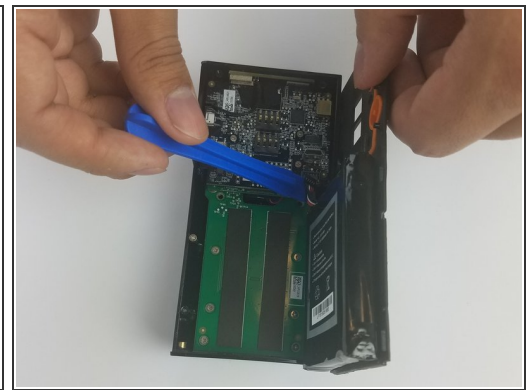
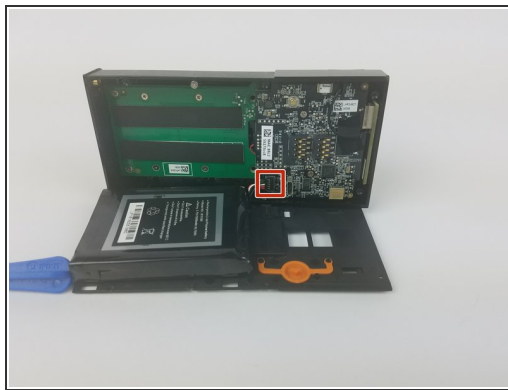
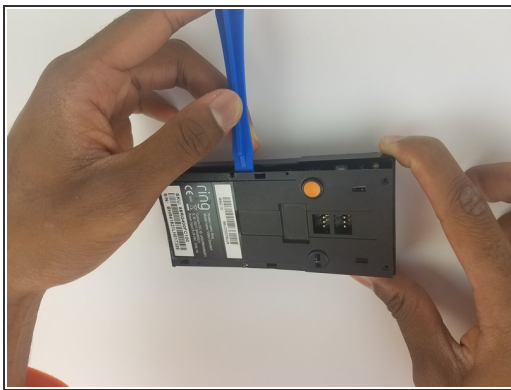
- [Phillips #00 Screwdriver](#) (1)
  - [iFixit Opening Tools](#) (1)
-

## Step 1 — Housing



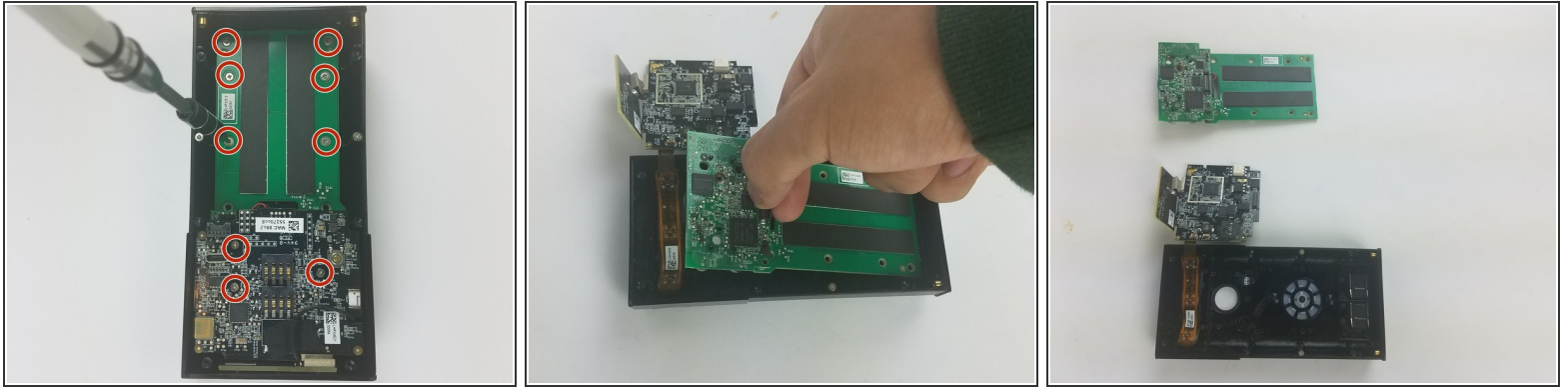
- Start by using the PH00 Phillips Screwdriver to take out the 6 1 mm screw's on the bottom of the device.
- Pry open the aluminium plate using the Plastic Opening Tool(s).
- Remove the 2 1. mm screws using the PH00 Phillips Screwdriver.

## Step 2



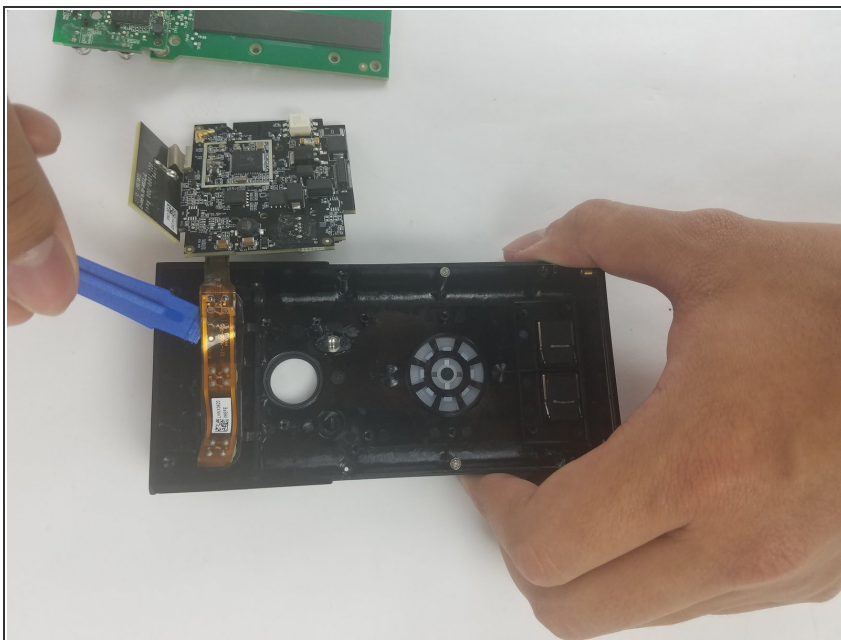
- Pry open the back case as shown using the Plastic Opening Tool.
- ⚠️ Disconnect the battery from motherboard by carefully pulling up on the connector.

### Step 3



- Unscrew the 9 1 mm screws using a PH00 Phillips Screwdriver.
- Carefully detach the motherboard, from the housing unit using your hands.

### Step 4



- Remove the plastic film using the Plastic Tool Opener.

To reassemble your device, follow these instructions in reverse order.