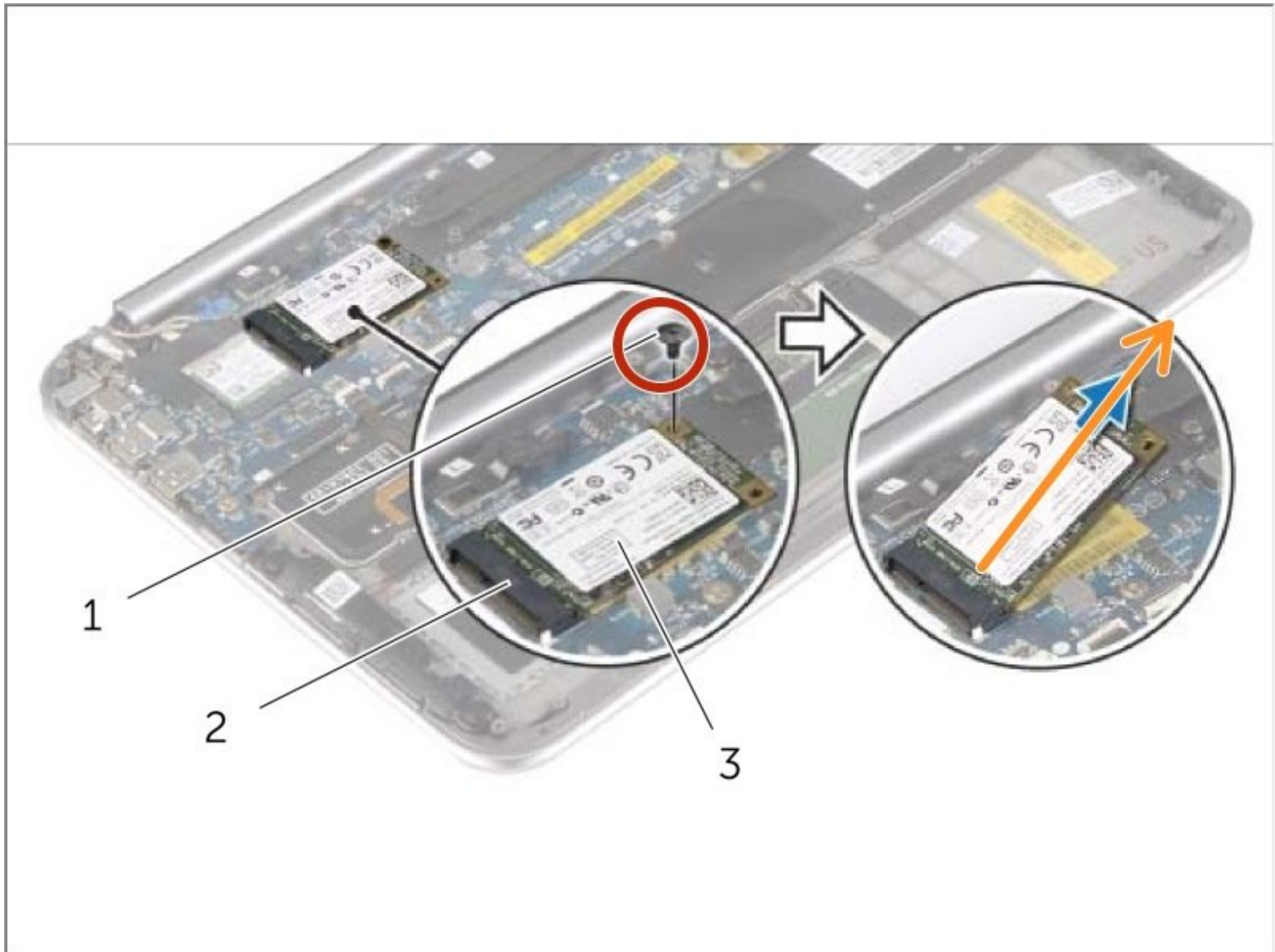




Dell XPS 12 9Q33 mSATA Card Replacement

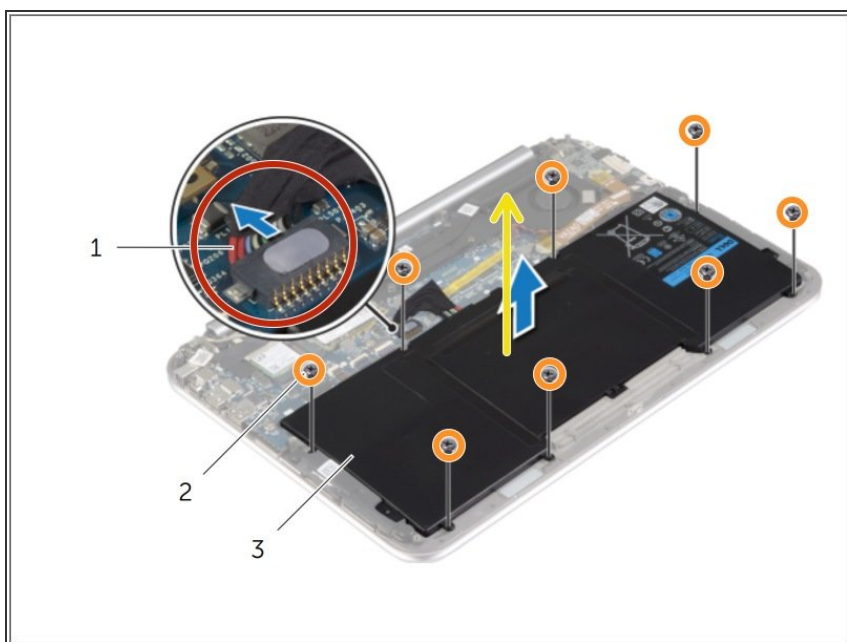
Written By: Johnathan Hammond



 **TOOLS:**

- [Phillips #0 Screwdriver](#) (1)
-

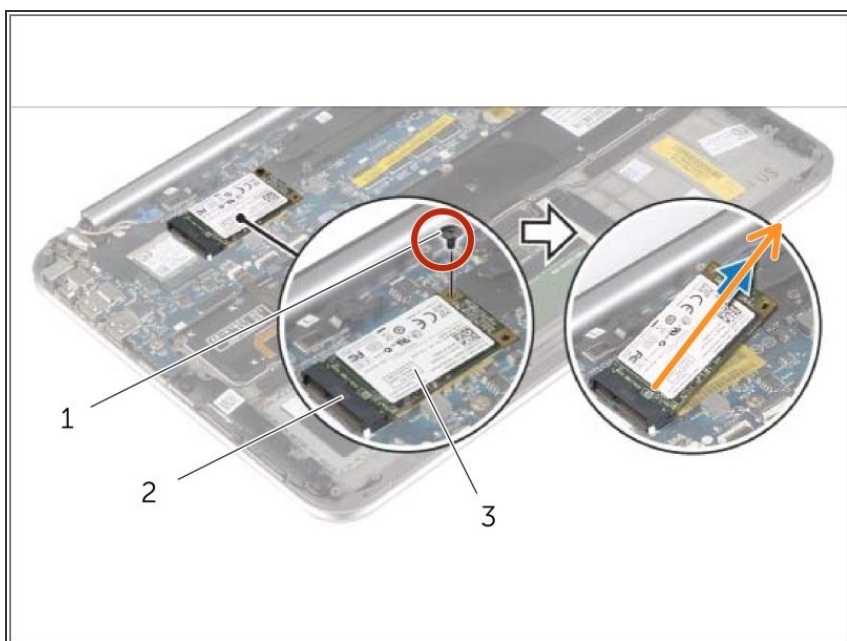
Step 1 — Removing the Battery



- Disconnect the battery cable from the system board.
- Remove the screws that secure the battery to the palm-rest assembly.
- Lift the battery, along with its cable, off the palm-rest assembly.

- ⓘ Slide and hold the power switch for about five seconds to ground the system board.
- ☑ If this is all you are doing Follow Step In Reverse if not Go to Next Step.

Step 2 — Removing the mSATA card



- Remove the screw that secures the mSATA card to the system board.
 - Slide and remove the mSATA card out of the mSATA-card connector.
- ☑ If this is all you are doing Follow Step In Reverse if not Go to Next Step.

To reassemble your device, follow these instructions in reverse order.