



Cuisinart DCC-1100 Power Cord Replacement

This guide will allow you to replace the power cord of the Cuisinart DCC-1100, 12-Cup Programmable Coffee Maker.

Written By: Nicholas Eales



INTRODUCTION

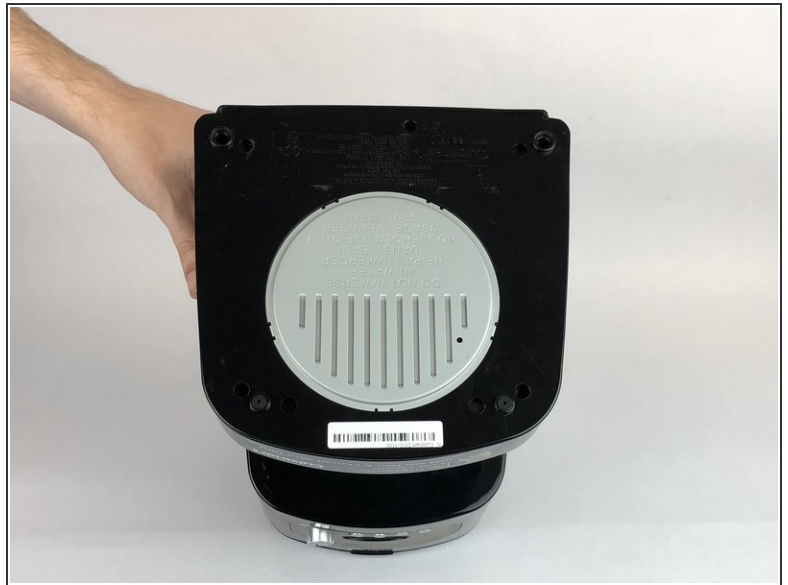
This guide will help you with replacing the power cord if your device is not receiving power.

The replacement will require a soldering iron.

TOOLS:

- [Phillips #0 Screwdriver](#) (1)
 - [Phillips #1 Screwdriver](#) (1)
 - [Flathead Screwdriver](#) (1)
 - [Soldering Iron](#) (1)
-

Step 1 — Power Cord



- Unplug the maker, remove the coffee pot, and flip upside down.

Step 2



- Remove the five 1.6mm Phillips #1 screws from the bottom panel.
- Remove the bottom panel.

Step 3



- Push the power cord inward and away from the plastic protection plate.

Step 4



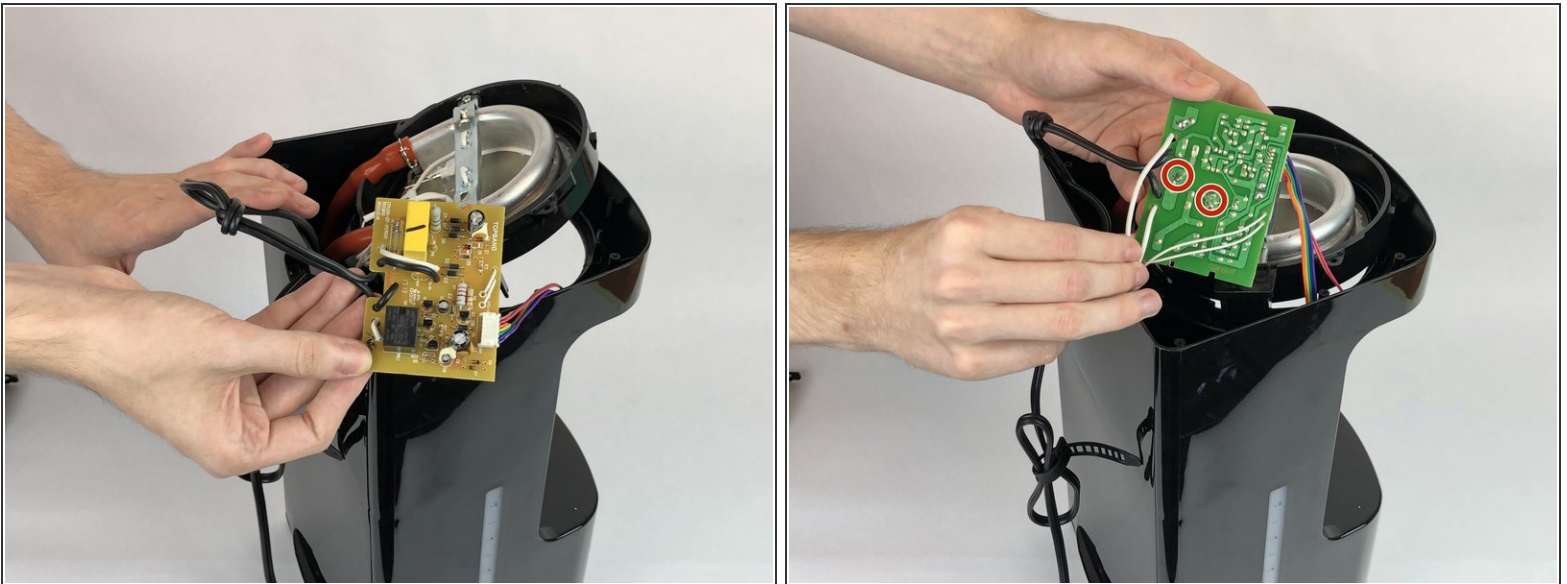
- Remove the two 1.4mm Phillips #0 screws from the plastic protection plate.
- Remove the plastic protection plate.

Step 5



- Remove the two 1.6mm Phillips #1 screws from the heating element.
- Using a flathead screwdriver to remove the outer clips holding the heating unit in place.
- Flip the heating element up to allow access to the circuit board.

Step 6



- Pull out the circuit board and rest it on the side of the machine.
- Desolder the power cable from the motherboard.

To reassemble your device, follow these instructions in reverse order.

This document was last generated on 2019-08-21 06:27:56 AM.