



Cuisinart DCC-1100 Charcoal Filter Replacement

This guide will allow you to replace the Charcoal Filter inside the Cuisinart DCC-1100, 12-Cup Programmable Coffeemaker

Written By: Jacob Steele



INTRODUCTION

This guide will help you replace the charcoal filter in your coffeemaker, if your coffee has a weird taste. Before starting, make sure you have your replacement filter ready.

Step 1 — Charcoal Filter



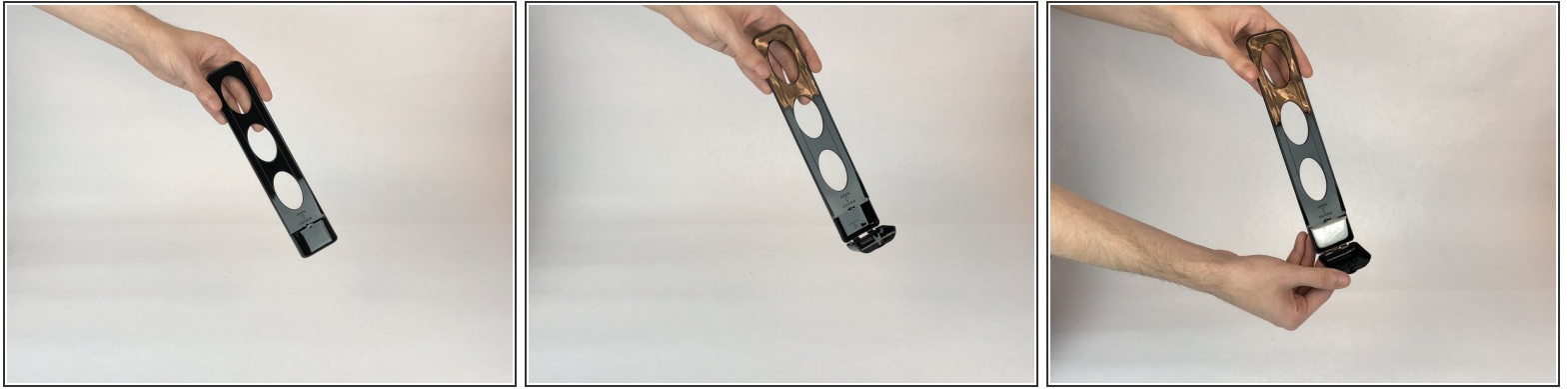
- Open the top lid of your coffeemaker

Step 2



- Grab and pull the holder up and out of the coffeemaker.

Step 3



- Open the charcoal filter compartment at the bottom of the holder.

Re-insert your Charcoal Filter holder back into its slot to finish.