



Logitech Extreme 3D Pro Top button circuit board Replacement

This guide will assist you to replace the top button circuit board on a Logitech Extreme 3D Pro joystick.

Written By: Emanuel Canela



INTRODUCTION

The top buttons and the trigger are typically the most used, meaning the dip switches could become the first to be worn. This will require replacement for full use of the joystick.

TOOLS:

- [Phillips #1 Screwdriver](#) (1)
 - [Tweezers](#) (1)
-

Step 1 — Disassembly of the handle



- Remove these three Phillips #1 screws:
 - Two 10mm screws.
 - One 7mm screw.

Step 2



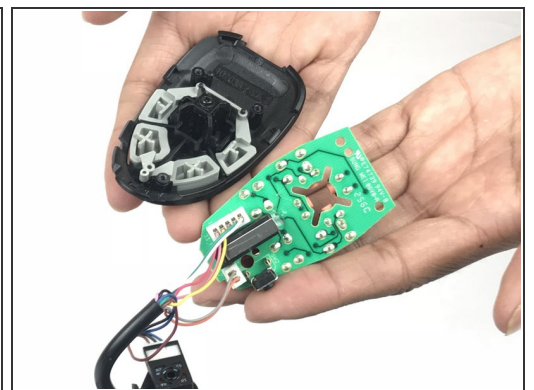
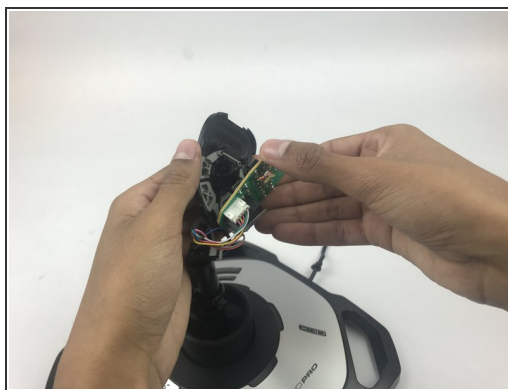
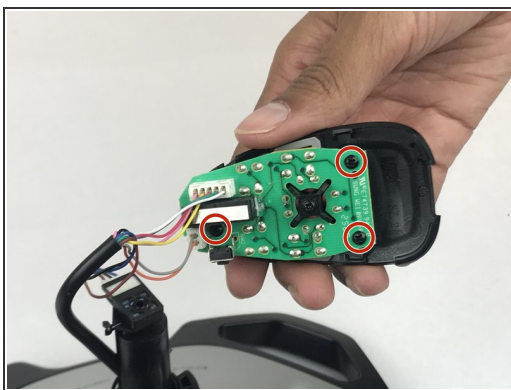
- Using your fingers, lower the rubber boot to reveal two screws underneath the joystick.
- Remove the two 10mm Phillips #1 screws.

Step 3



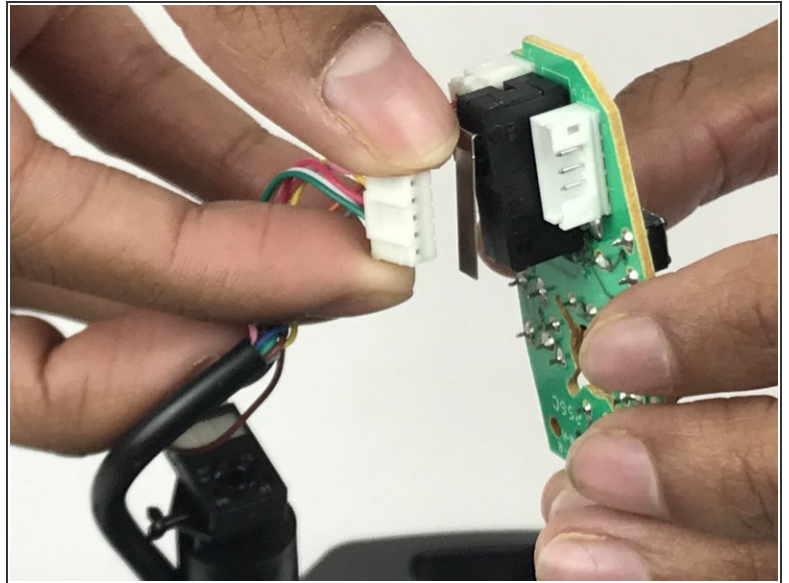
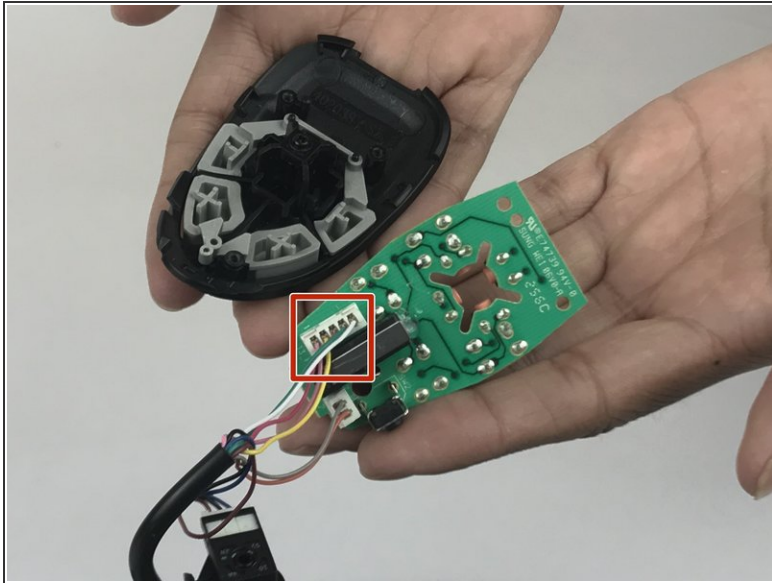
- Pull apart the joystick chassis by hand.
- Release this clip located underneath the hand rest
- ⓘ The circuit board will be loose and may fall down.

Step 4 — Top button circuit board



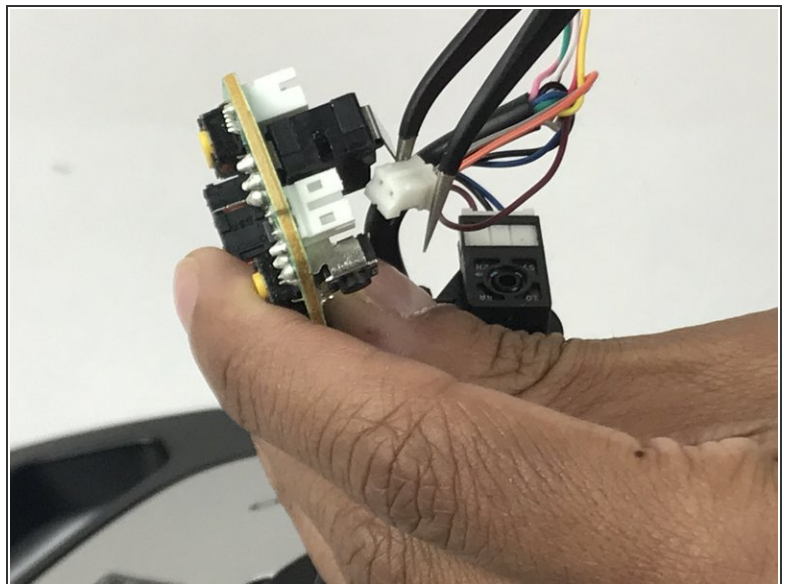
- Remove the three 7mm Phillips #1 screws from the button board.
- Remove the button board from the plastic top.
- ⓘ When taken apart the plastic buttons can fall out.

Step 5



- Disconnect the cable from the button board.

Step 6



- Disconnect the smaller cable from the button board.

To reassemble your device, follow these instructions in reverse order.