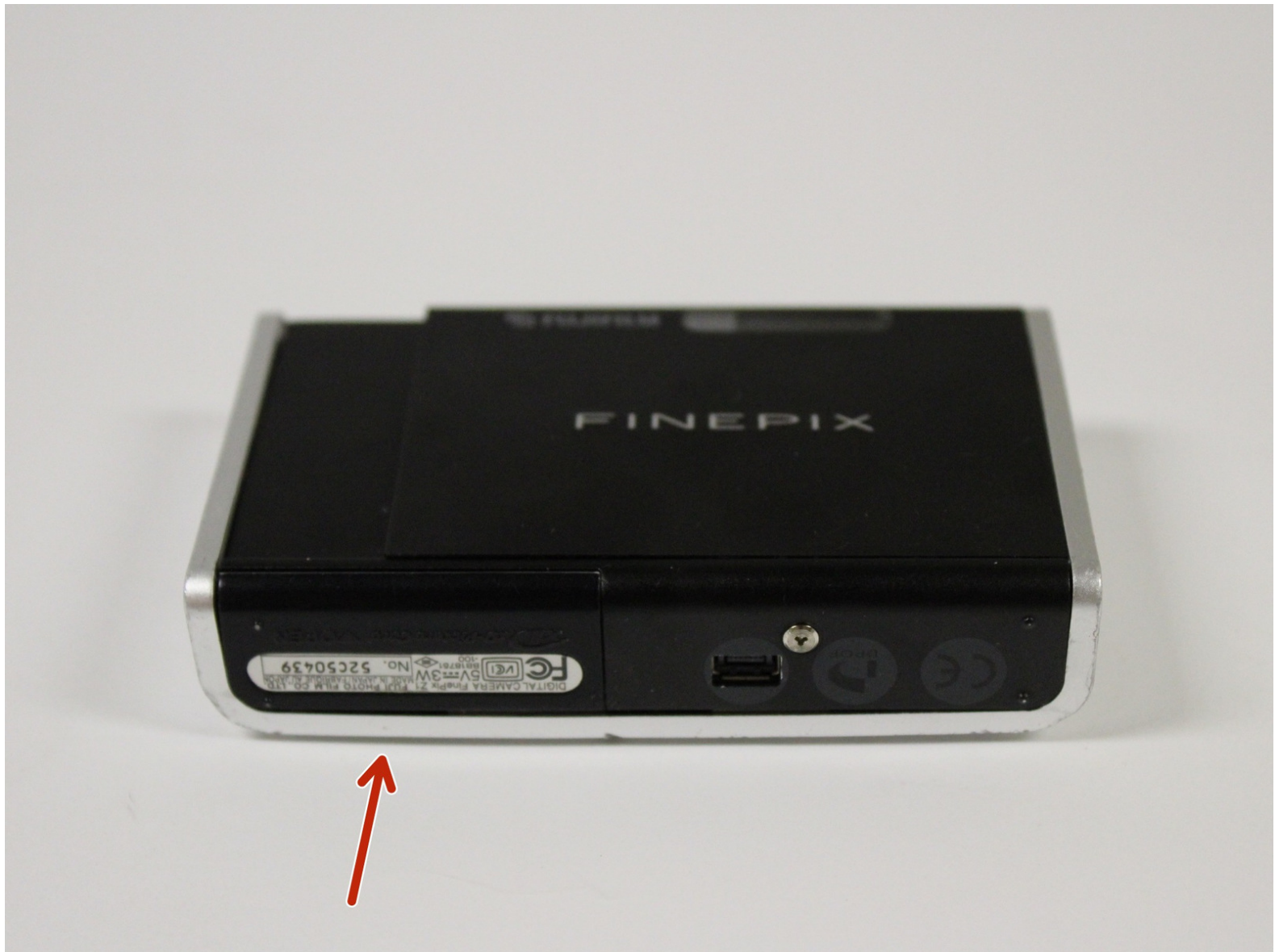




# Fujifilm FinePix Z1 Battery Access Door Spring Replacement

If the battery access door on your device is malfunctioning, use this guide to replace the screw or the door itself.

Written By: Carra



## INTRODUCTION

The battery access door for the Fujifilm FinePix Z1 is attached with a spring and a rod that allows for easy opening and closing of the door. If the screw is damaged or has somehow been jammed, the door may not open or close correctly. This guide will aid you in fixing the malfunctioning pieces.

---

### TOOLS:

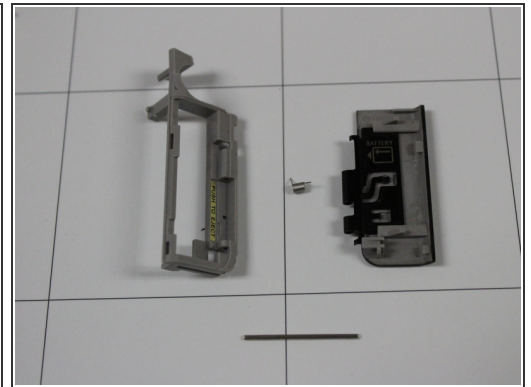
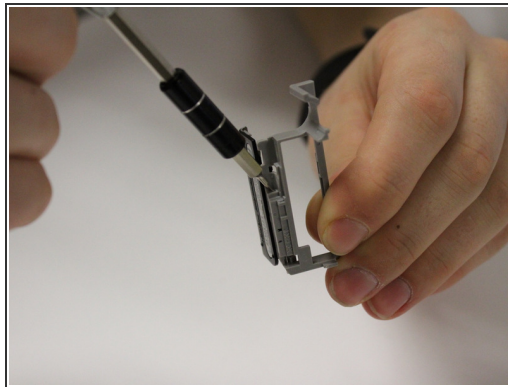
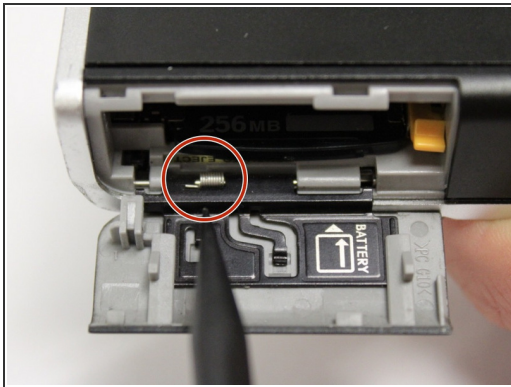
- [Hex 0.7 screwdriver](#) (1)
-

## Step 1 — Battery Access Door Spring



- Locate the Battery Access Door on the bottom of the camera.
- Ensure that the door has no obvious cracks or damage.
- See if the door slides out and opens completely.

## Step 2



- Apply pressure to the door and pop the component out.
- Using a H0.7 bit, push the rod out of the door to remove it from the camera.
- Adjust or replace the spring.

To reassemble your device, follow these instructions in reverse order.

This document was last generated on 2018-05-08 12:37:15 AM.