



Dell Alienware 18 Hard Drive Replacement

Written By: darrius



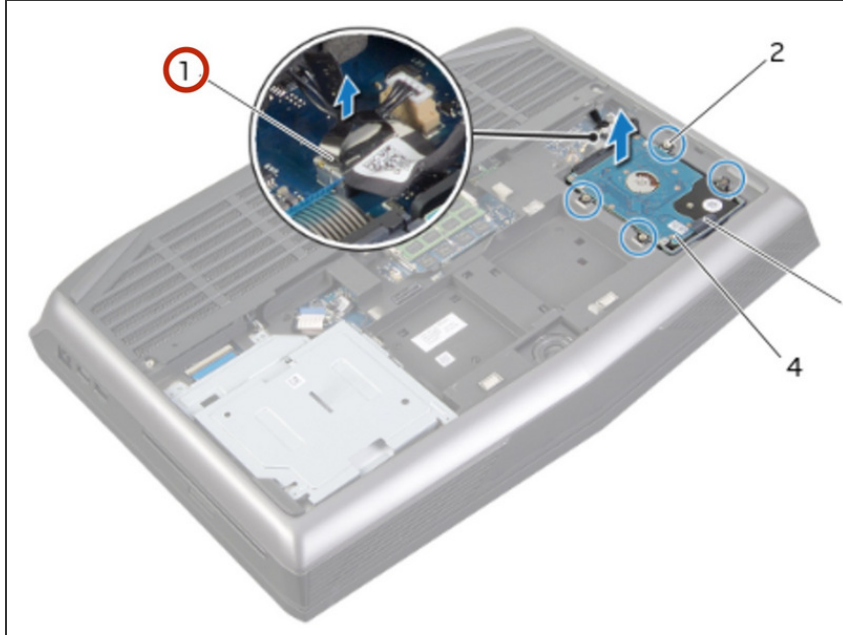
INTRODUCTION

In this guide, we will be showing you how to remove and replace the Hard Drive.

TOOLS:

- [Phillips #0 Screwdriver](#) (1)
-

Step 1 — Disconnecting the Hard-Drive Cable



⚠ WARNING: Before working inside your computer, read the safety information that shipped with your computer and follow the steps in [Before You Begin](#).

⚠ CAUTION: To avoid data loss, do not remove the hard drive while the computer is in Sleep or On state.

⚠ CAUTION: Hard drives are extremely fragile. Exercise care when handling the hard drive.

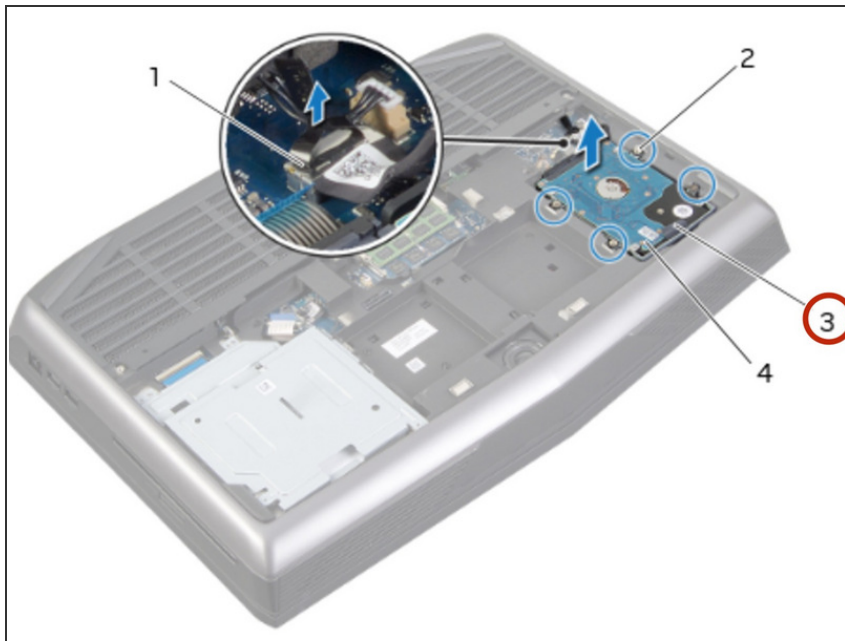
- Disconnect the hard-drive cable from its connector on the system board.

Step 2 — Loosen the Screws



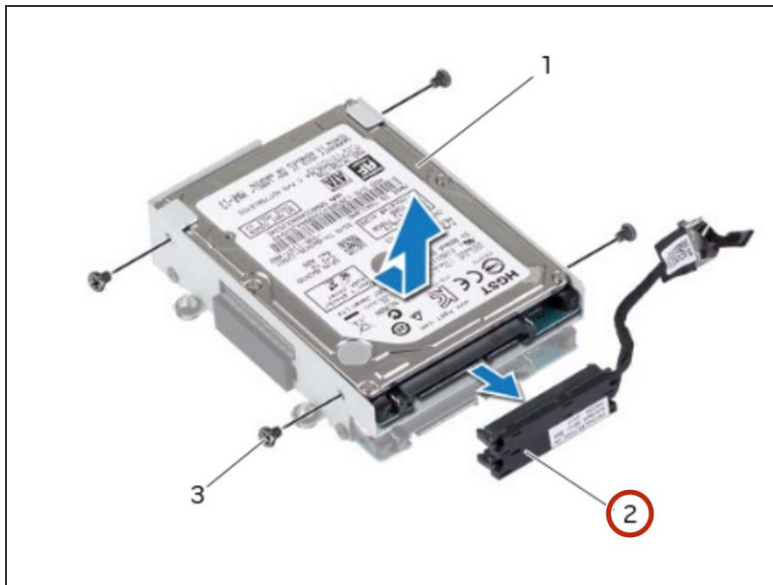
- Loosen the captive screws that secure the hard-drive assembly to the computer base.

Step 3 — Lifting the Hard-Drive Assembly



- Using the pull-tab, lift the hard-drive assembly out of the computer base.

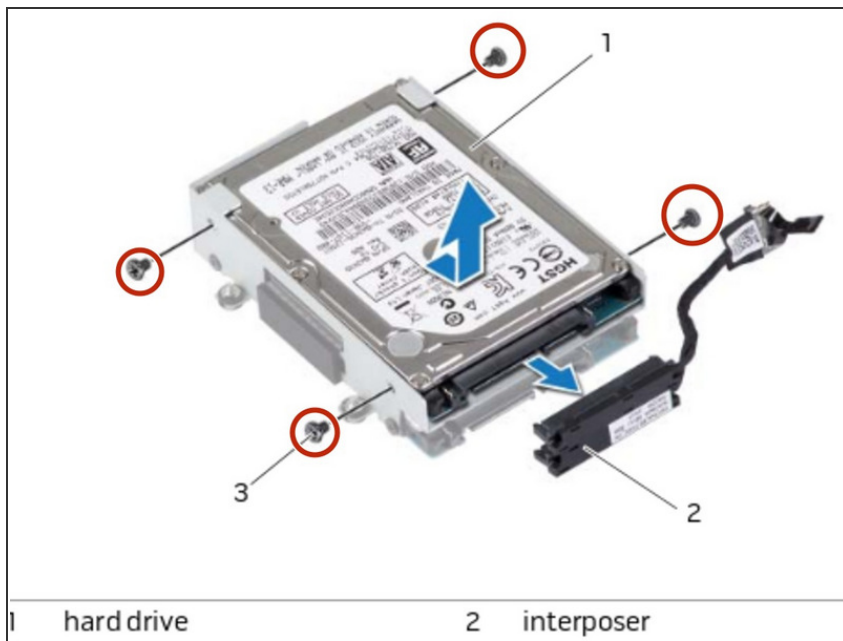
Step 4 — Disconnecting the Interposer



- Disconnect the interposer from the hard drives.

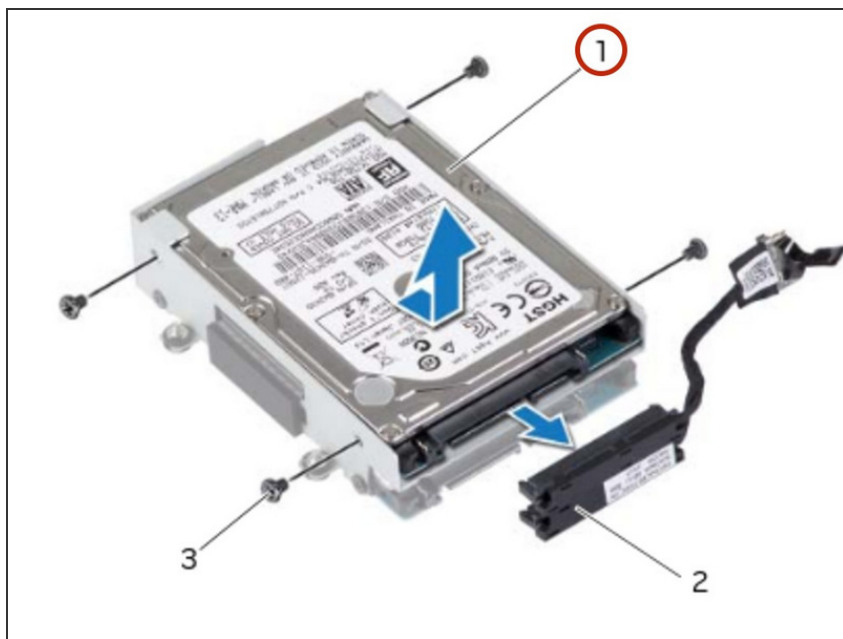
(i) NOTE: Your computer supports up to three drives.

Step 5 — Remove the Screws



- Remove the screws that secure the hard drive(s) to the hard-drive bracket and slide the hard drive(s) out of the hard-drive bracket.

Step 6 — Placing the Hard-Drive



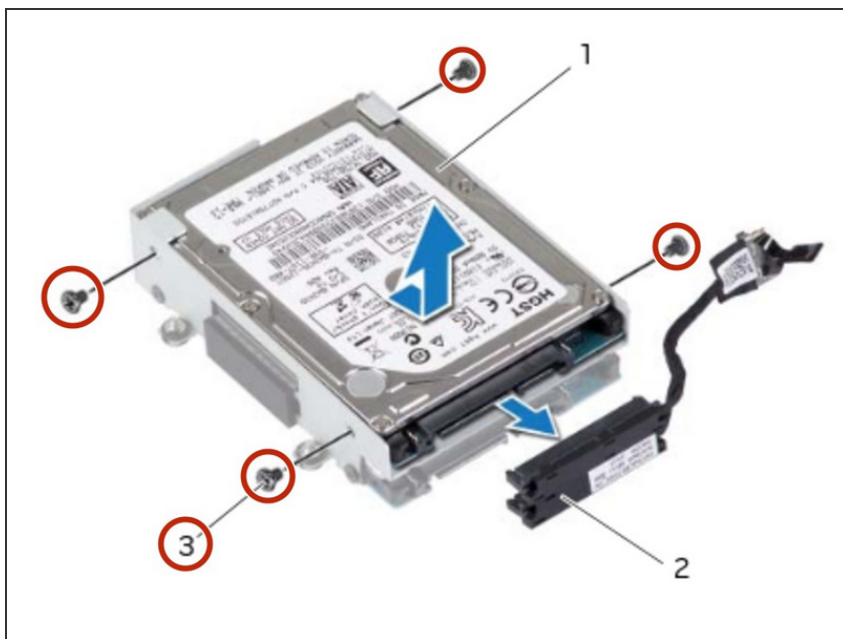
- Place the **NEW** primary hard drive in the hard-drive bracket.

Step 7 — Sliding the Secondary Hard-Drive



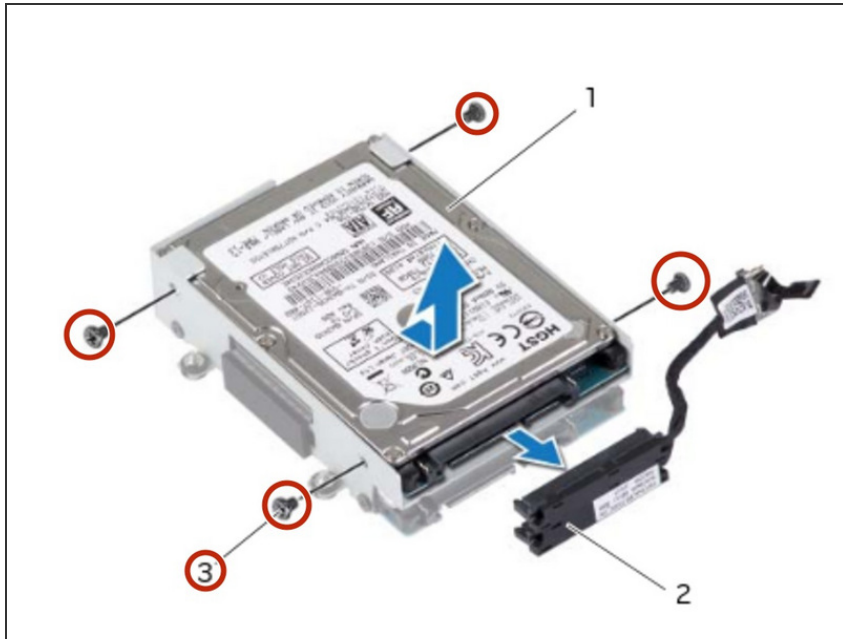
- If applicable, slide the secondary hard drive into the hard-drive bracket.

Step 8 — Secure the Screws



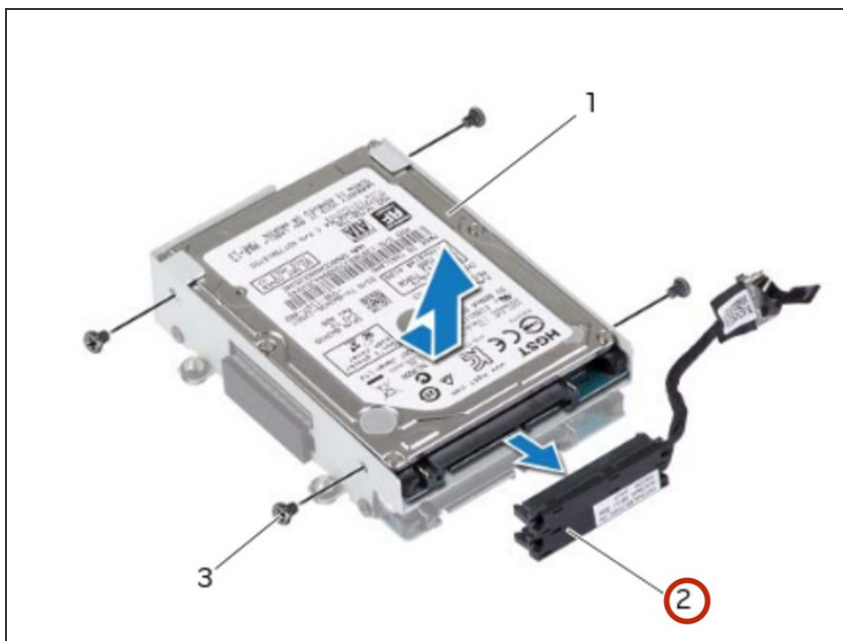
- Replace the screws that secure the primary hard drive to the hard-drive bracket.

Step 9 — Replace the Screws



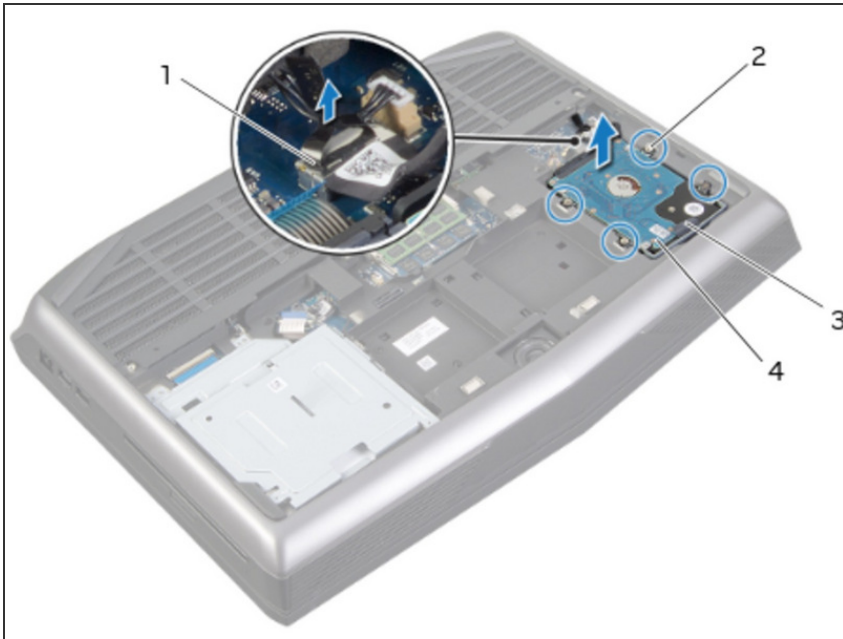
- If applicable, replace the screws that secure the secondary hard drive to the hard-drive bracket.

Step 10 — Connecting the Interposer



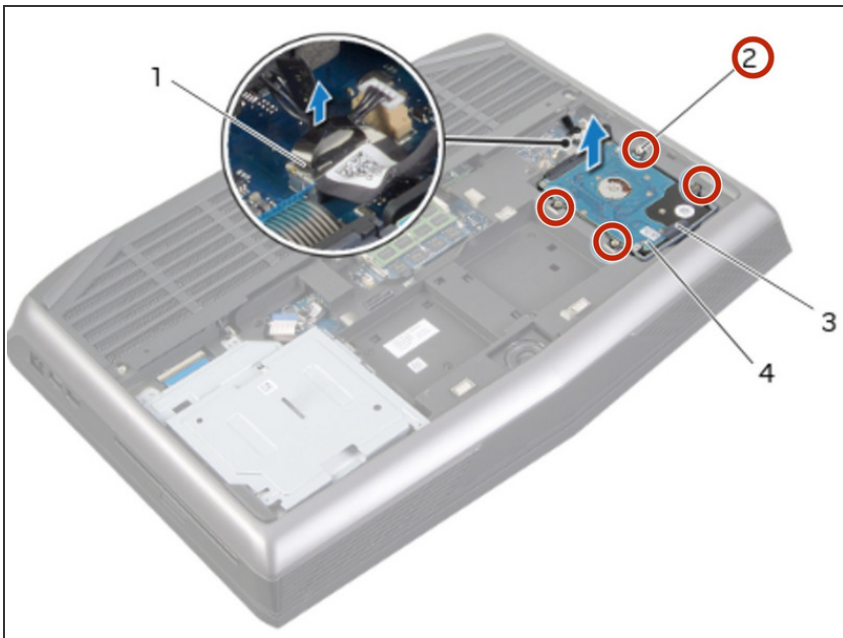
- Connect the interposer to the hard drives.

Step 11 — Placing the Hard-Drive Assembly



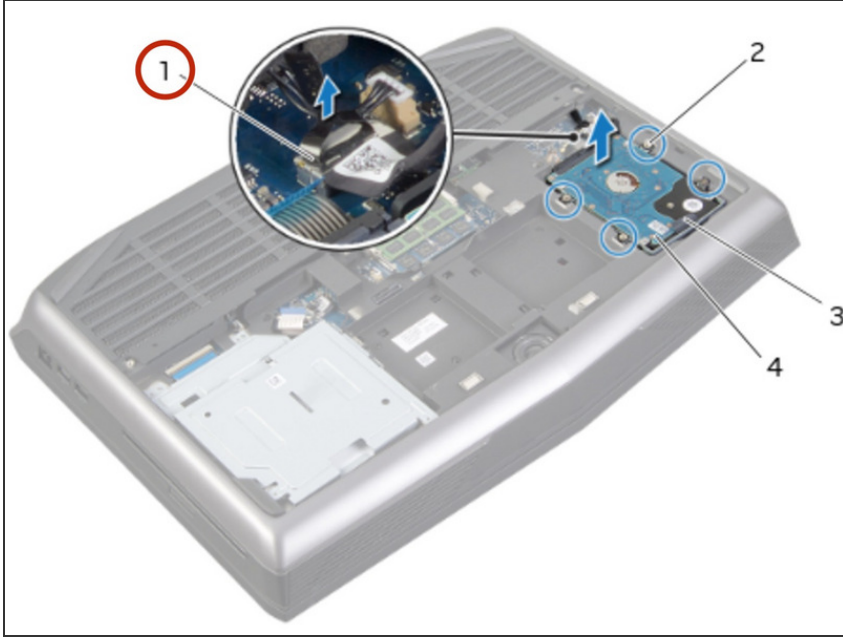
- Place the hard-drive assembly in the computer base.

Step 12 — Tightening the Screws



- Tighten the captive screws that secure the hard-drive assembly to the computer base.

Step 13 — Connecting the Hard-Drive



- Connect the hard-drive cable to its connector on the system board.

This document was last generated on 2018-07-09 11:03:33 AM.