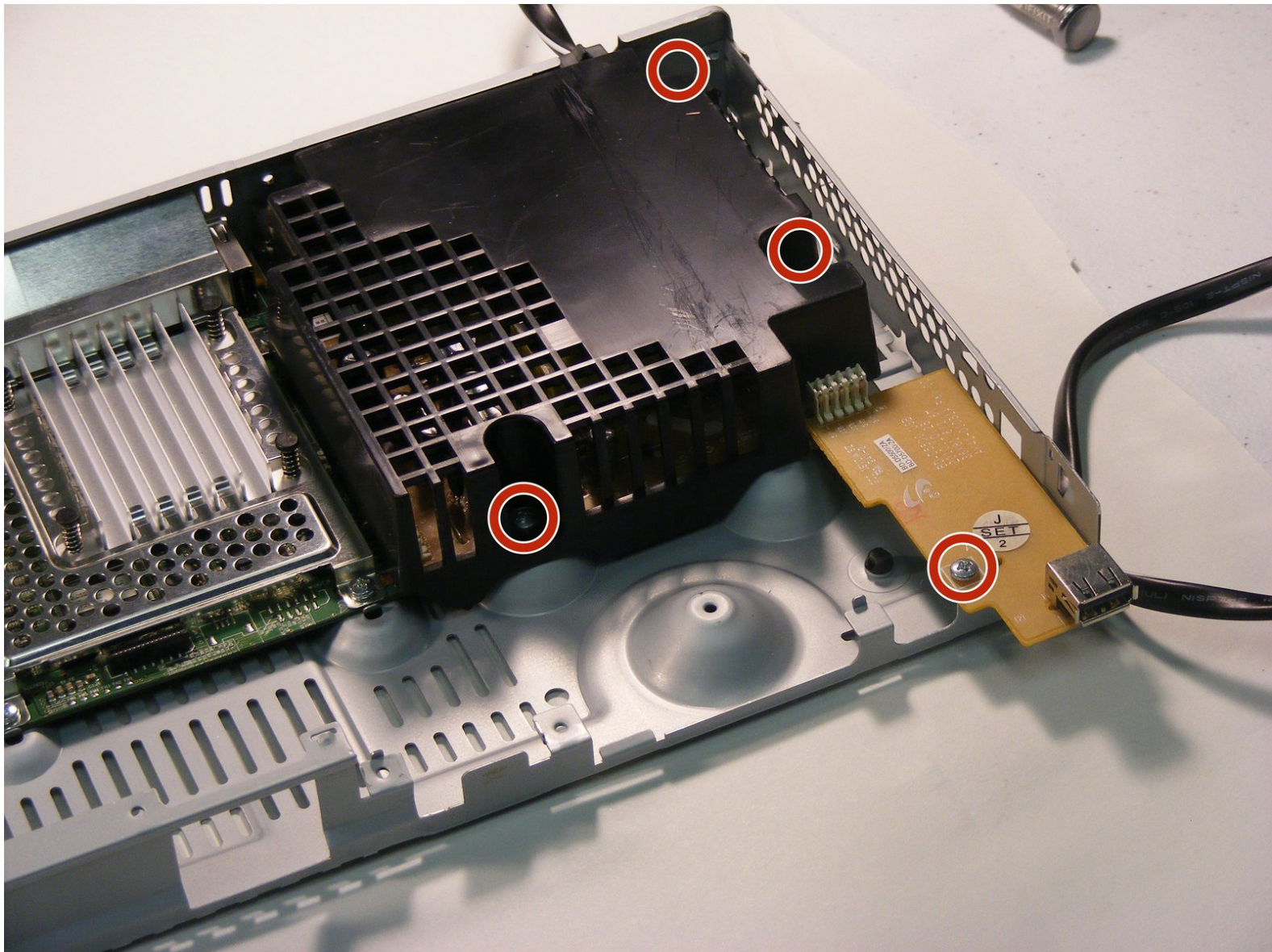




Samsung BD-D5500 Power Supply Replacement

Completing this guide will entail successfully replacing the power supply for the device. This could fix common problems such as the device not powering on.

Written By: Trevor Neman



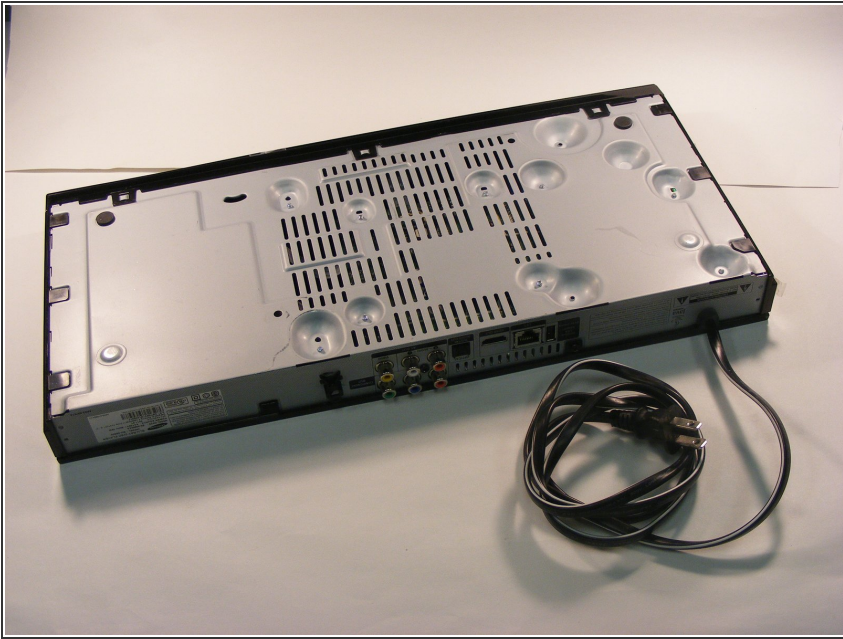
INTRODUCTION

This guide details the process of replacing the player's power supply module. The power supply is mainly responsible for powering on the device so this may answer many problems concerning this issue.

TOOLS:

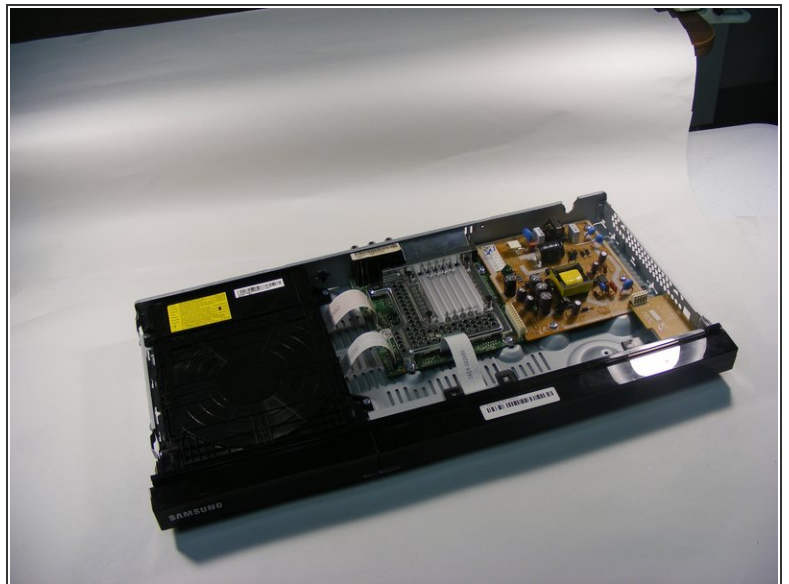
- [iFixit Opening Tools](#) (1)
 - [Spudger](#) (1)
 - [Phillips #2 Screwdriver](#) (1)
-

Step 1 — Samsung BD-D5500 Disassembly



- To begin, turn the device over so that the bottom is facing up. There are 9 black clips that attach the plastic body to the case. Remove these clips from the case.

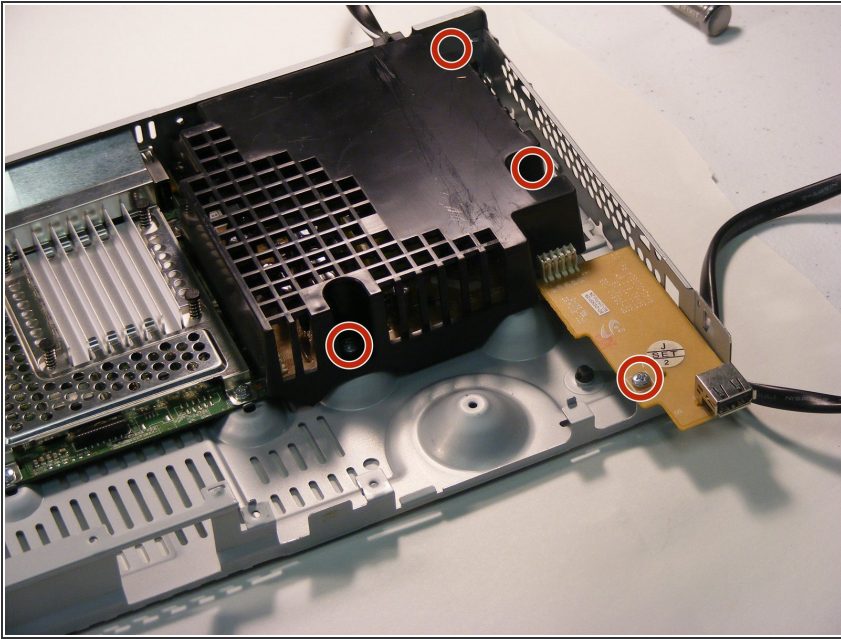
Step 2



- Use a Phillips #2 screwdriver to remove the screw that attaches the top cover to the rear of the device. This will allow you to remove the cover.

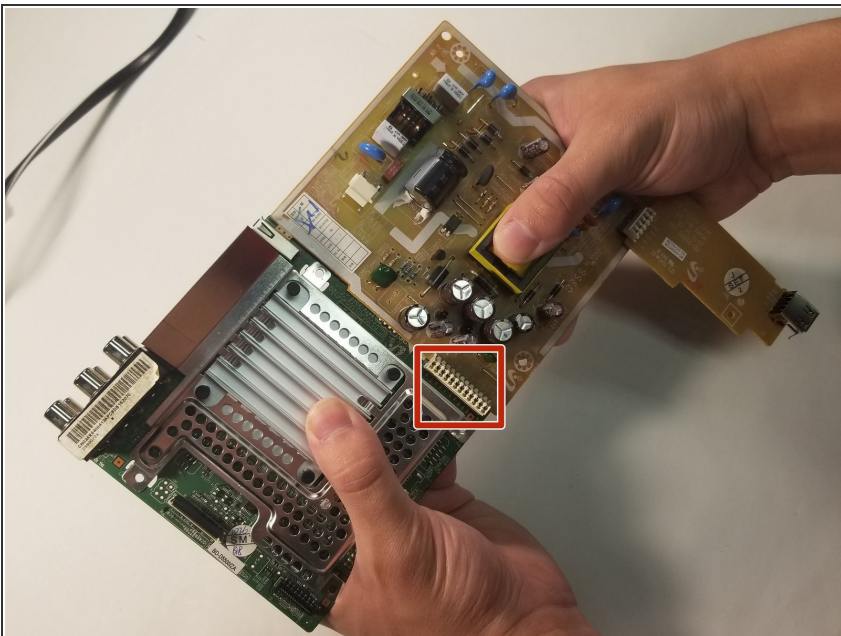
i This is how your device will look after you remove the top.

Step 3 — Power Supply



- Unscrew the 1.2mm screws labeled with a red circle and remove the power supply from the player.

Step 4



- Labeled with a red rectangle is the location where they are connected. Grab the motherboard in one hand and the power supply in the other, and pull the motherboard up and push the power supply down. The motherboard and power supply should then disconnect.

To reassemble your device, follow these instructions in reverse order.

This document was last generated on 2019-02-06 09:34:34 PM.