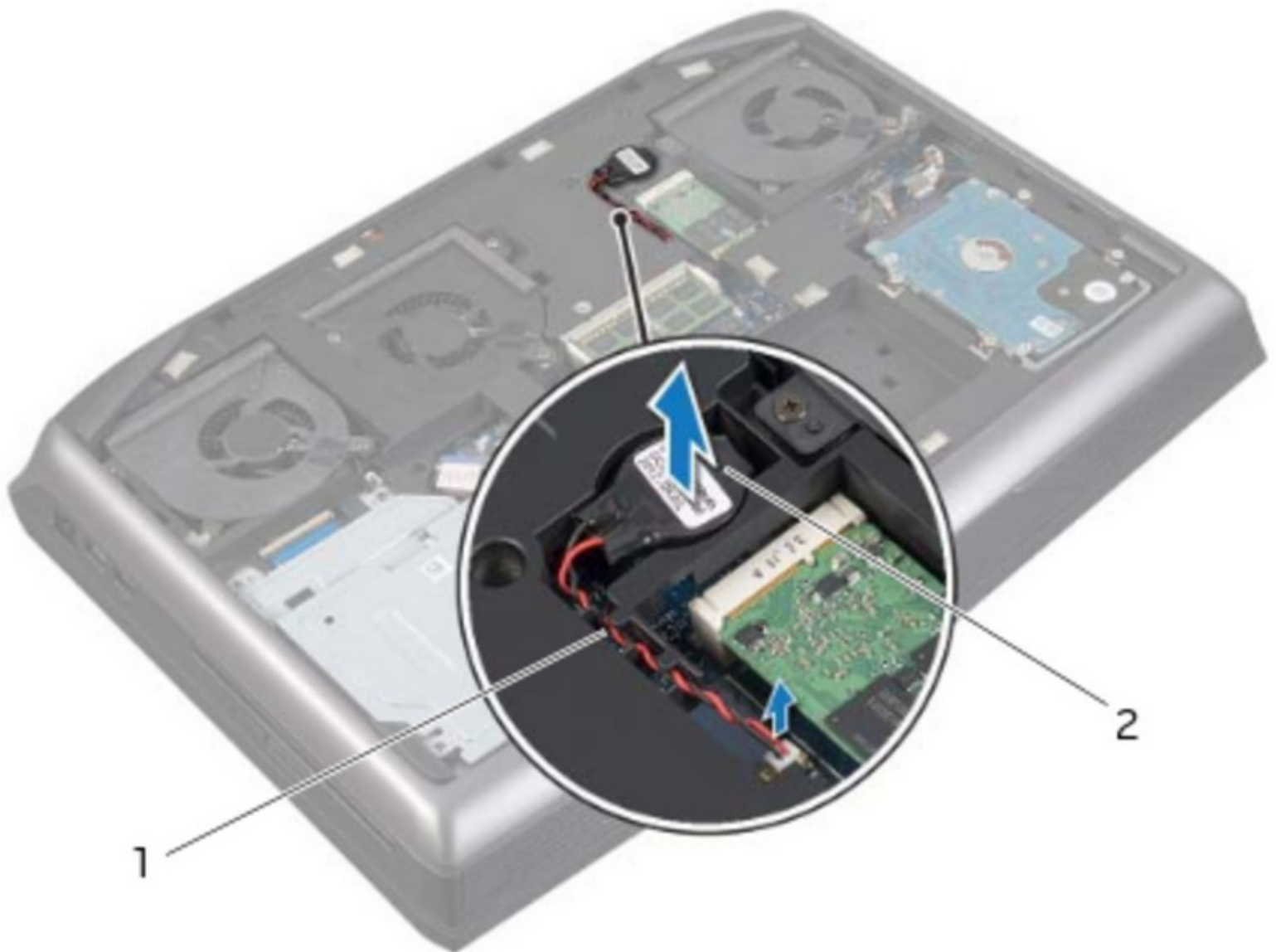




# Dell Alienware 18 Coin-Cell Battery Replacement

Written By: darrius



## INTRODUCTION

In this guide, we will be showing you how to remove and replace the Coin-Cell Battery.

---

### TOOLS:

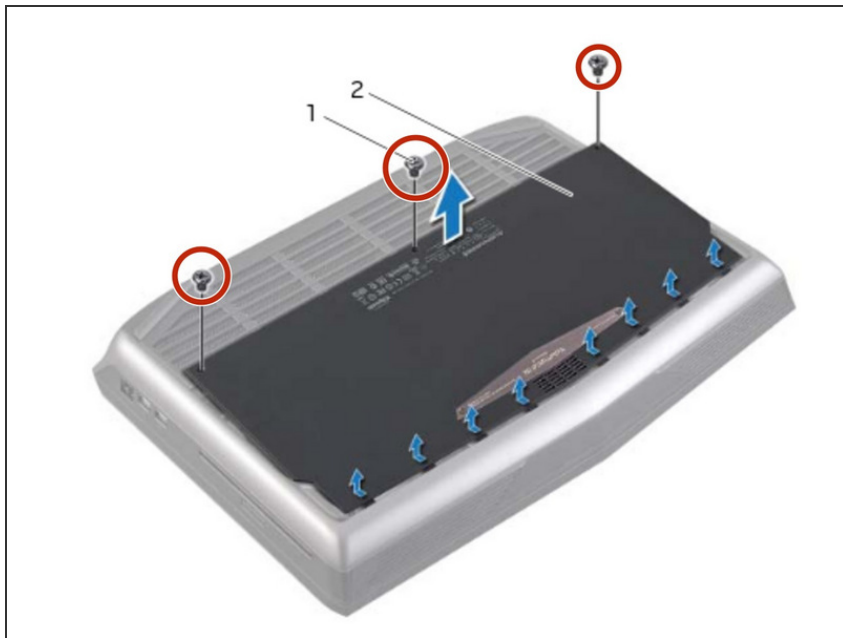
- [Phillips #0 Screwdriver](#) (1)
-

## Step 1 — Before You Begin



**⚠ WARNING:** Before working inside your computer, read the safety information that shipped with your computer and follow the steps in [Before You Begin](#).

## Step 2 — Removing the Screws



- Remove the screws that secure the base cover to the computer base.

### Step 3 — Slide the Cover



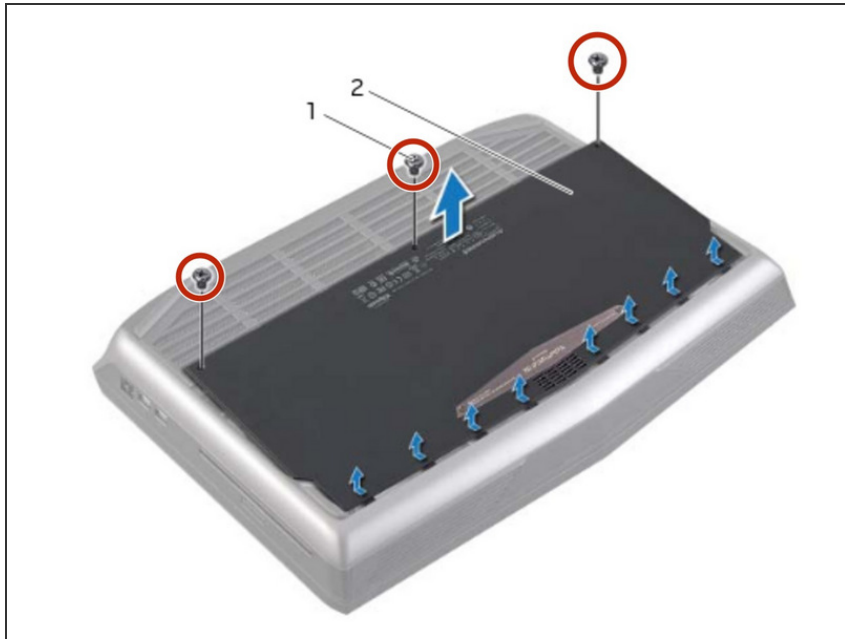
- Slide the base cover towards the rear of the computer and lift it off the computer base.

### Step 4 — Replacing the Base Cover



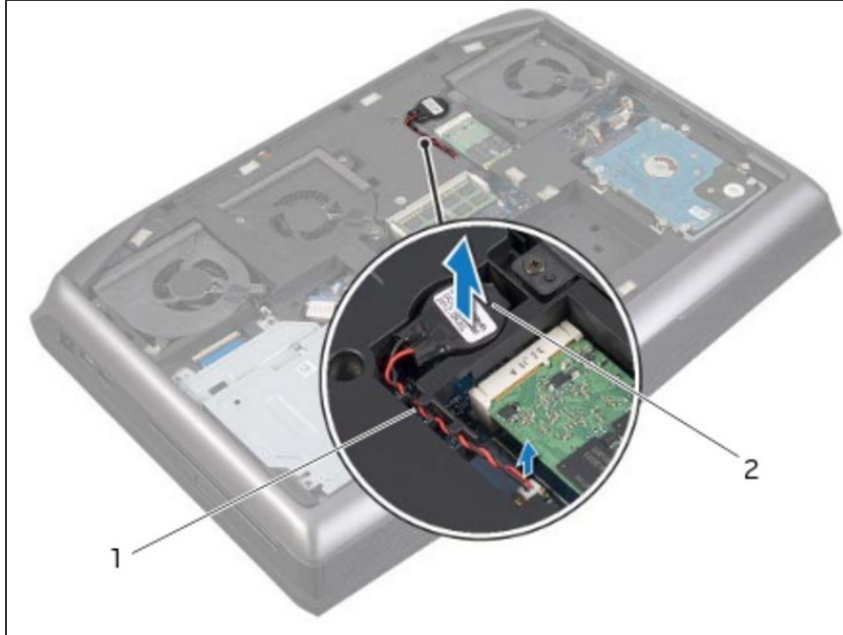
- Align the tabs on the **NEW** base cover with the slots on the computer base and slide the base cover into place.

## Step 5 — Replacing the Base Cover



- Replace the screws that secure the base cover to the computer base.

## Step 6 — Disconnecting the Coin-Cell Battery



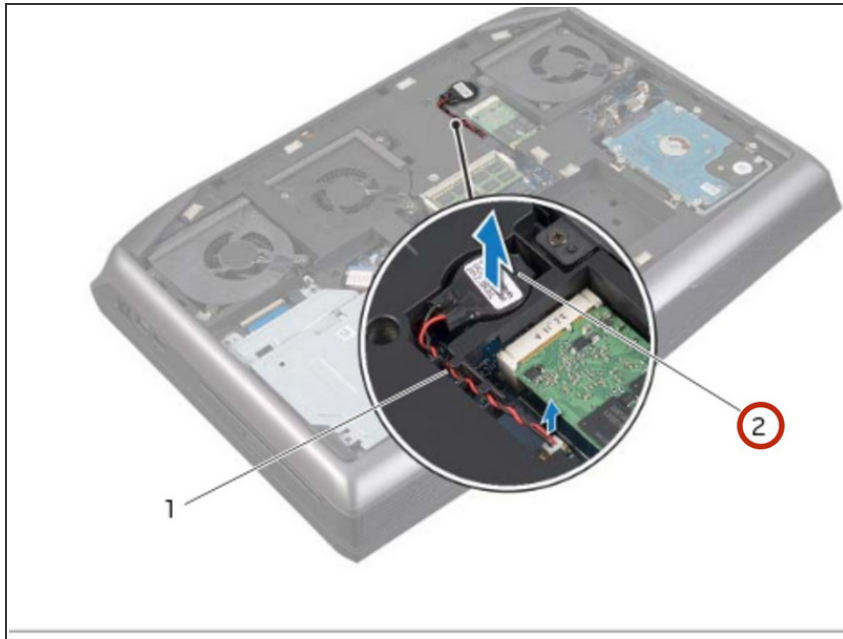
**⚠ WARNING:** Before working inside your computer, read the safety information that shipped with your computer and follow the steps in [Before You Begin](#).

**⚠ WARNING:** The battery may explode if installed incorrectly. Replace the battery only with the same or equivalent type. Discard used batteries according to the manufacturer's instructions.

**⚠ CAUTION:** Removing the coin-cell battery resets the BIOS settings to default. It is recommended that you note the BIOS settings before removing the coin-cell battery.

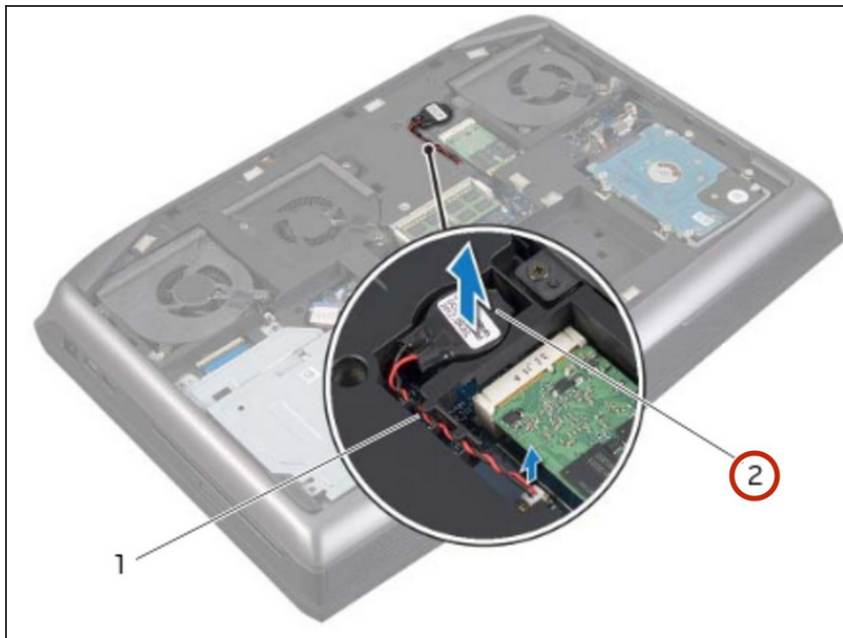
- Disconnect the coin-cell battery cable from its connector on the system board.

## Step 7 — Removing the Coin-Cell Battery



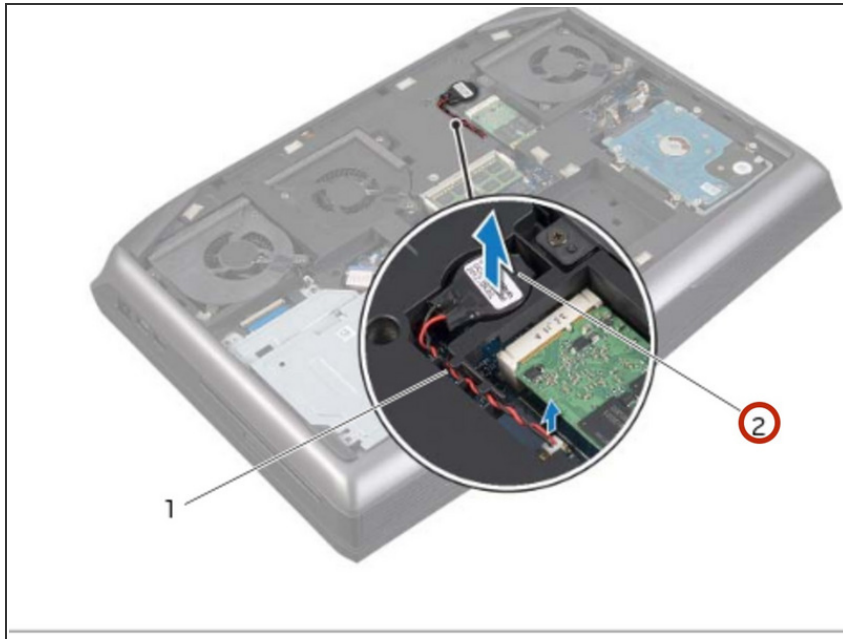
- Remove the coin-cell battery cable from the routing guides on the computer base.

## Step 8 — Prying the Coin-Cell Battery



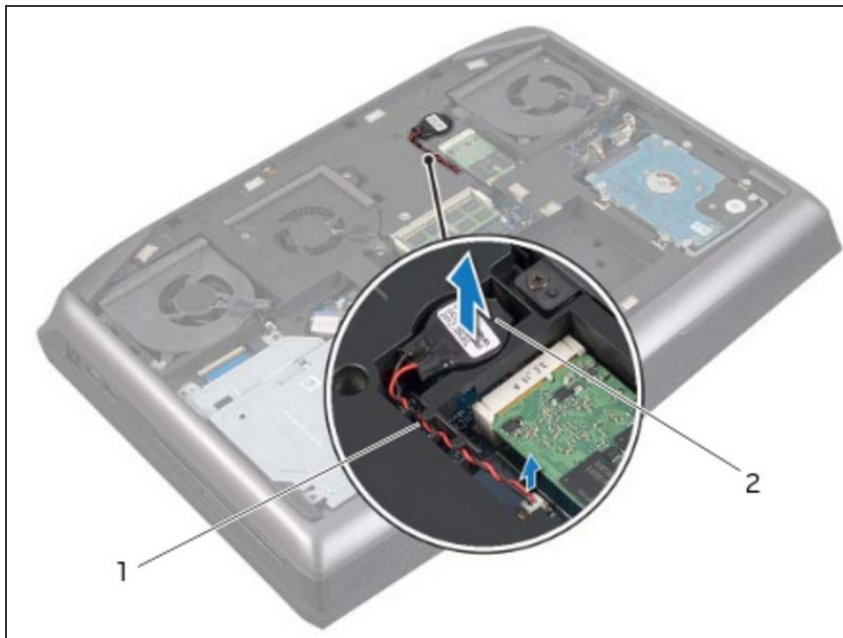
- Pry up the coin-cell battery from the slot on the system board.

## Step 9 — Placing Coin-Cell Battery



- Place the **NEW** coin-cell battery into the slot and press gently to adhere it to the computer base.

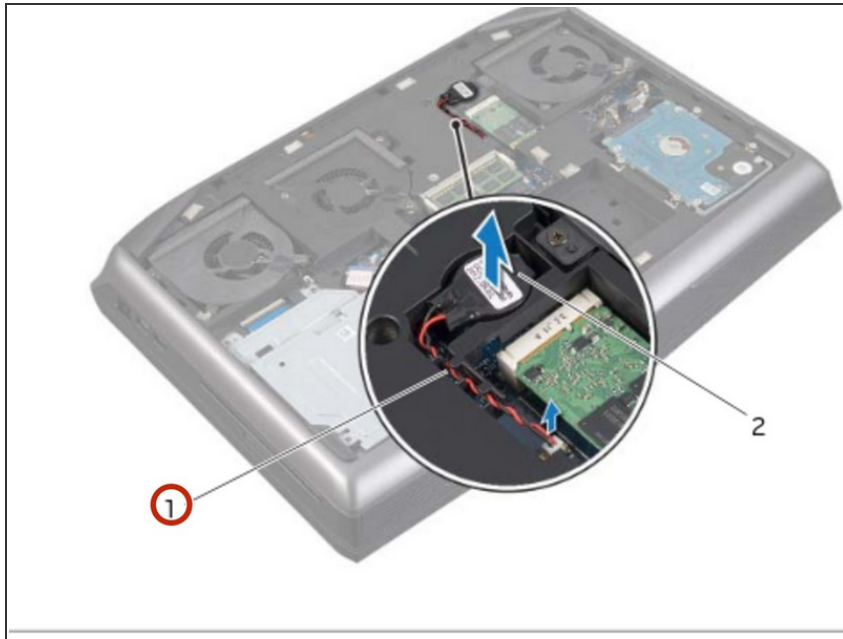
## Step 10 — Routing the Coin-Cell Battery Cable



- Route the coin-cell battery cable through the routing guides on the computer base.



## Step 11 — Connecting Coin-Cell Battery



- Connect the coin-cell battery cable to its connector on the system board.

This document was last generated on 2018-07-09 07:56:46 PM.