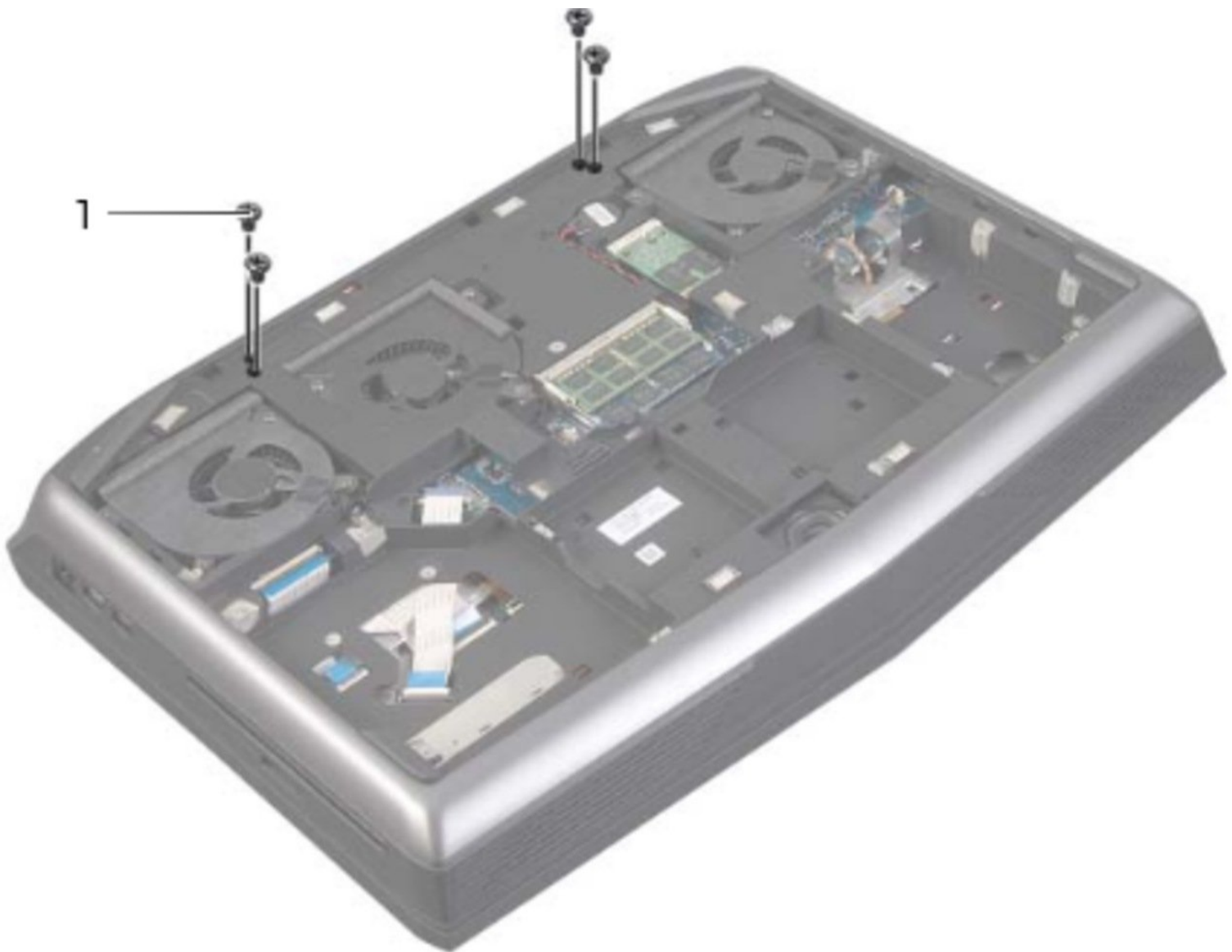




# Dell Alienware 18 Display Assembly Replacement

Written By: darrius



---

## INTRODUCTION

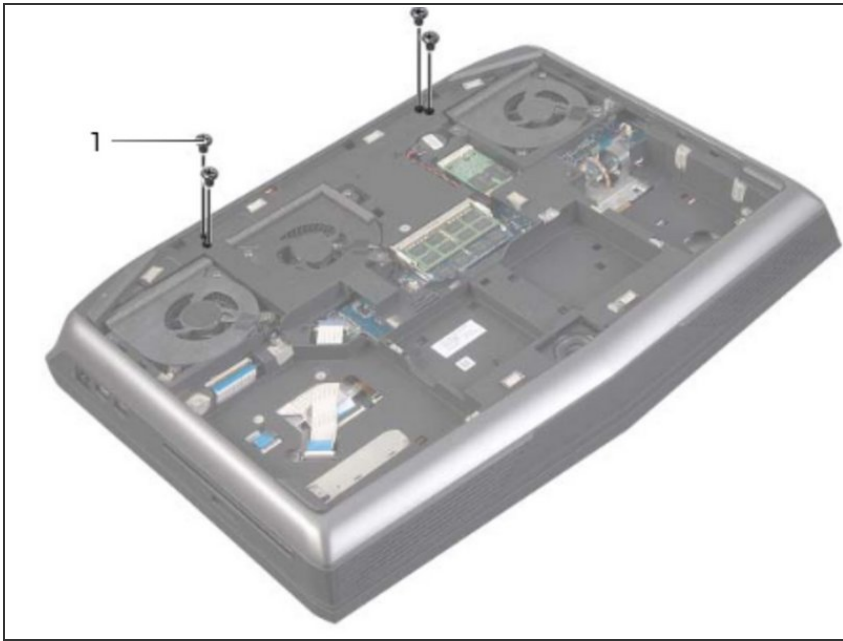
In this guide, we will be showing you how to remove and replace the Display Assembly.

---

### TOOLS:

- [Phillips #0 Screwdriver](#) (1)
-

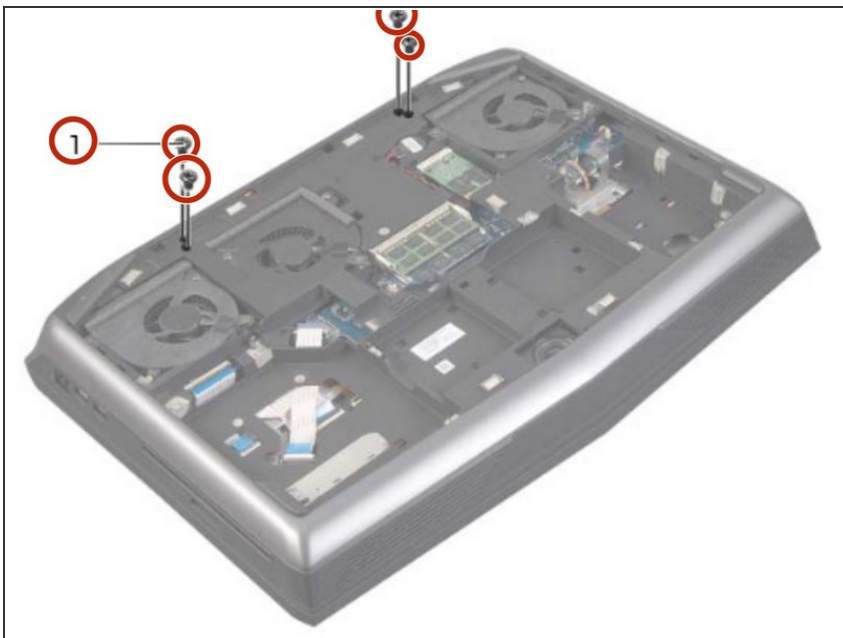
## Step 1 — Closing the Display



**⚠ WARNING:** Before working inside your computer, read the safety information that shipped with your computer and follow the steps in [Before You Begin](#)

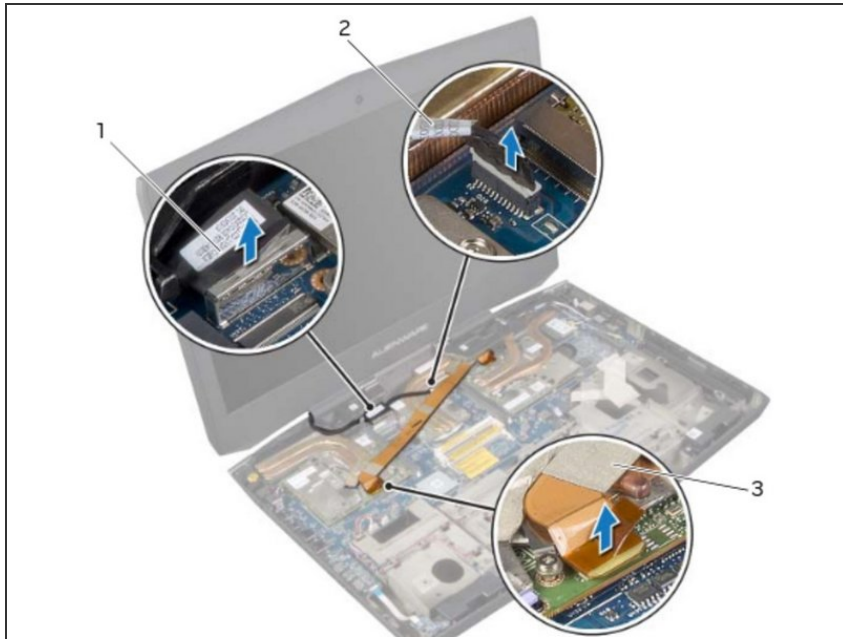
- Close the display and turn the computer over.

## Step 2 — Remove the Screws



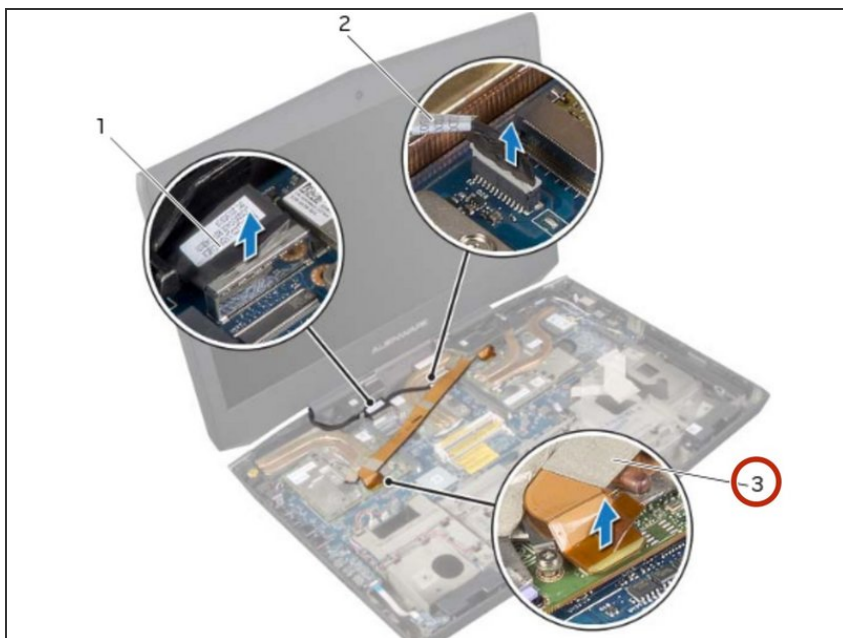
- Remove the screws that secure the display assembly to the computer base.

### Step 3 — Open the Display



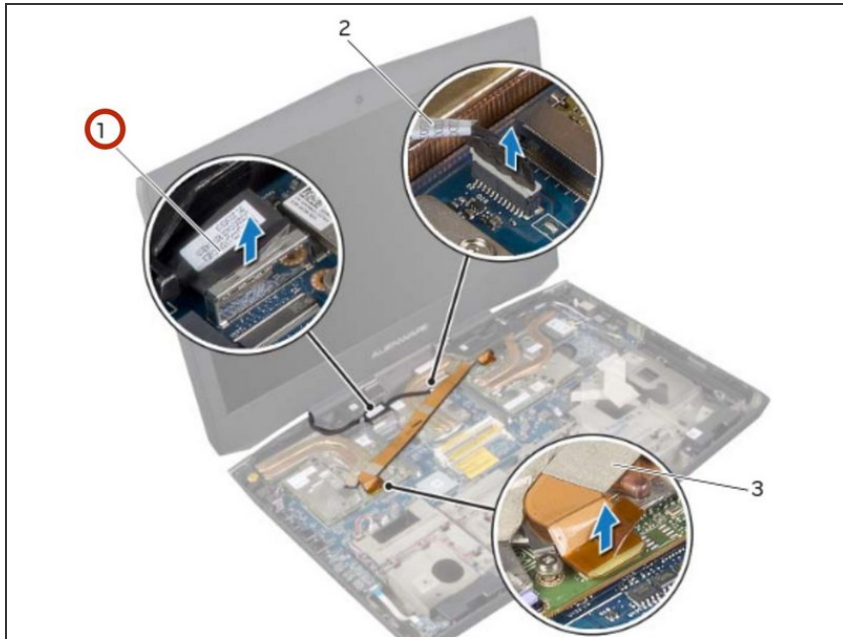
- Turn the computer over and open the display.

### Step 4 — Disconnecting the Video-Card Connector



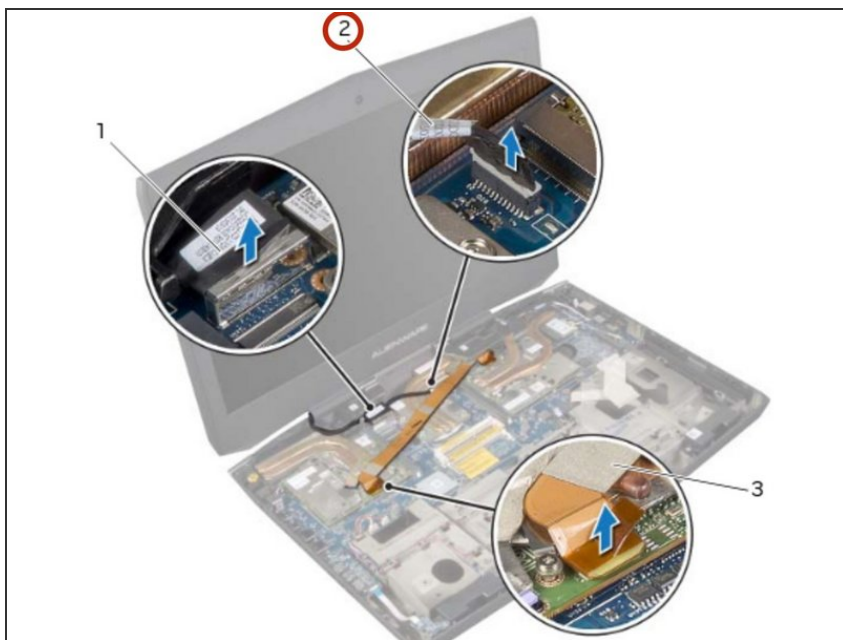
- Disconnect the video-card connector cable from its connector on the system board.

## Step 5 — Disconnecting the Display Cable



- Pull the pull-tab to disconnect the display cable from its connector on the system board.

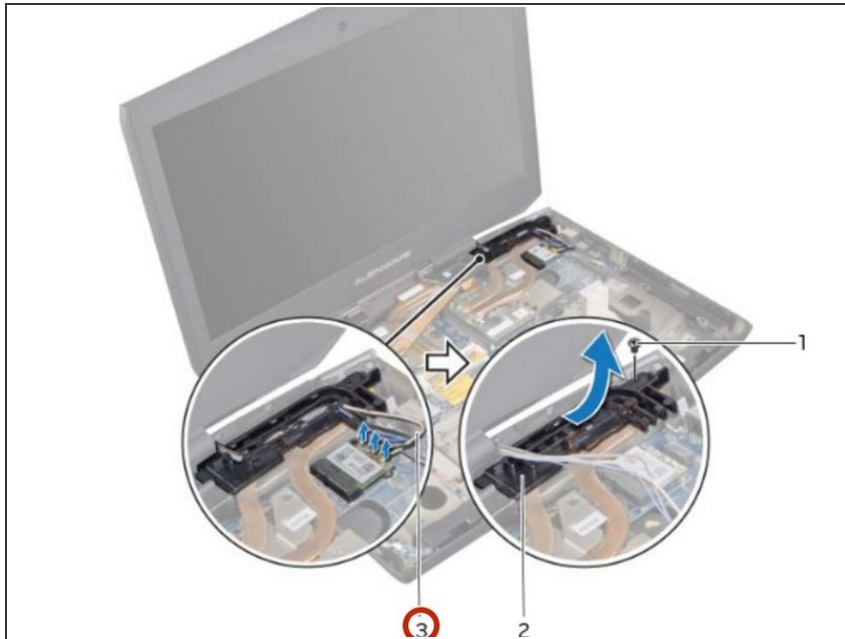
## Step 6 — Disconnecting the LED-Logo Board Cable



- Disconnect the LED-logo board cable from its connector on the system board.

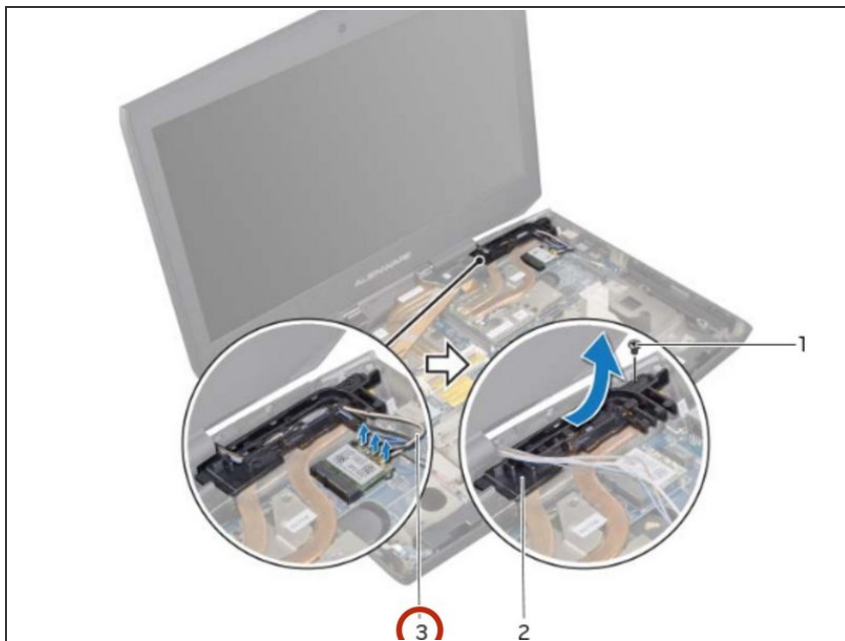


## Step 7 — Disconnecting the Antenna Cables



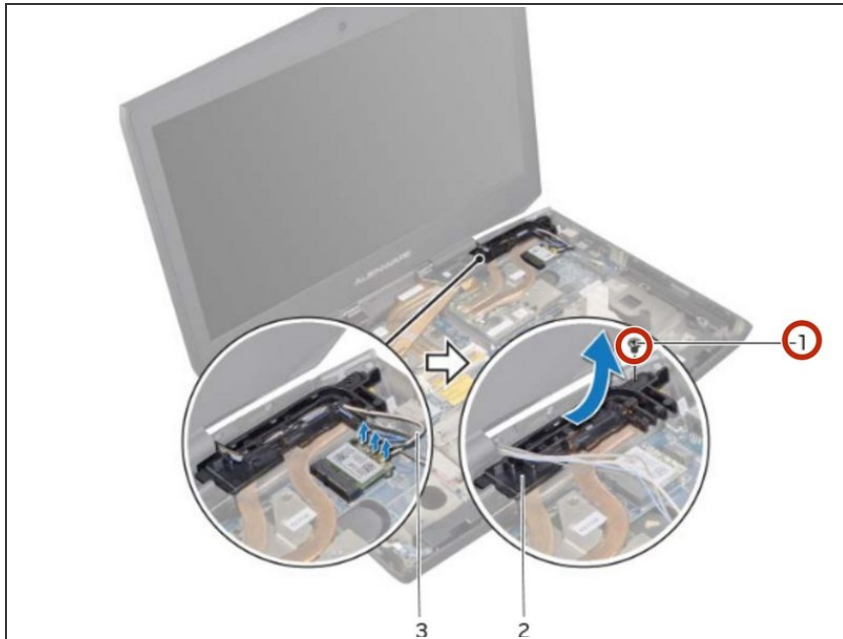
- Disconnect the antenna cables from the connectors on the Mini-Card. See ["Removing the Wireless Mini-Card"](#) on page 105.

## Step 8 — Removing the Cables



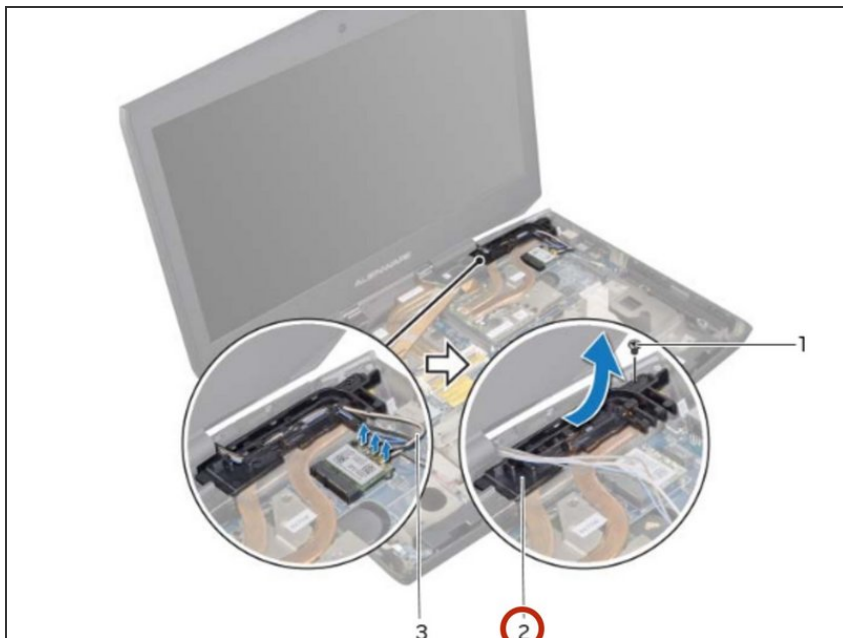
- Note the routing of the antenna cables, and then remove the cables from the routing guides on the computer base.

## Step 9 — Remove the Screws



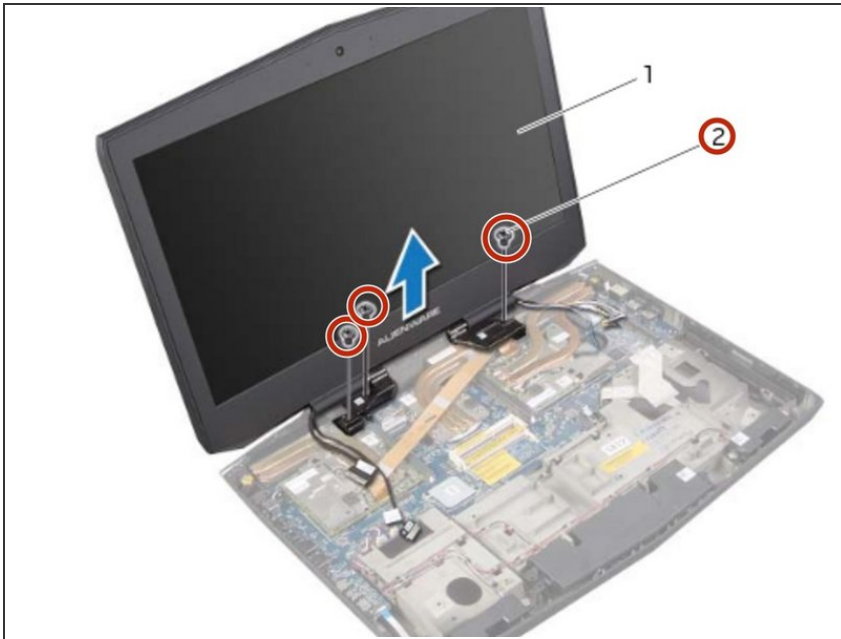
- Remove the screw that secures the routing guides to the computer base.

## Step 10 — Lifting the Routing Guides



- Slide and lift the routing guides off the computer base.

## Step 11 — Remove the Screws



- Remove the screws, on the display hinges, that secure the display assembly to the computer base.

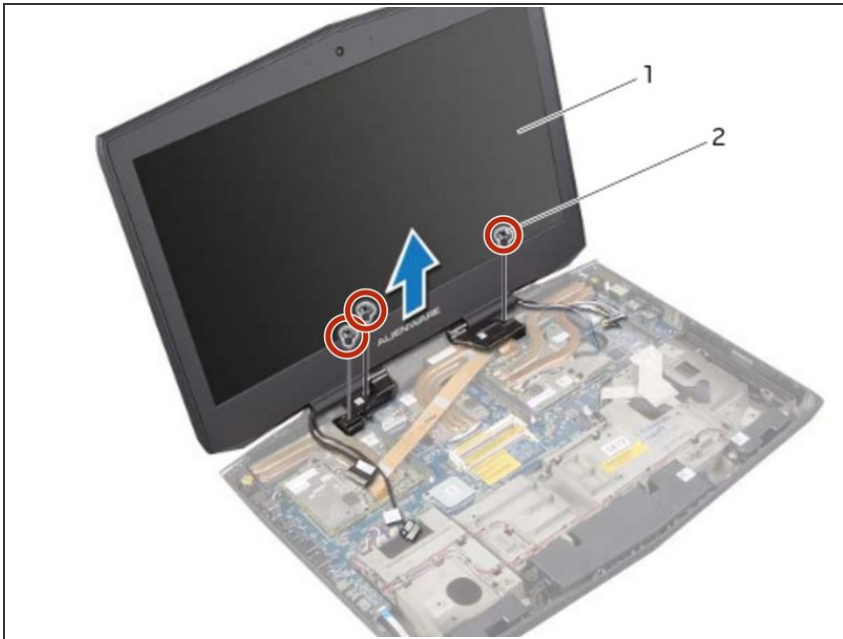
## Step 12 — Lifting the Display Assembly



- Move the display to a perpendicular position to the computer base, and then lift the display assembly off the computer.

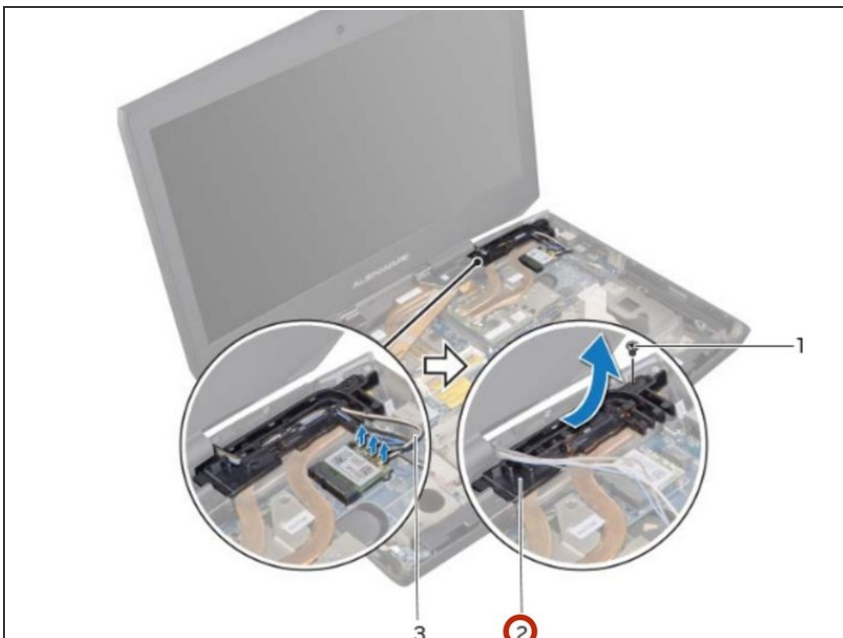


## Step 13 — Placing the Display Assembly



- Place the **NEW** display assembly in position and replace the screws, on the display hinges, that secure the display assembly to the computer base.

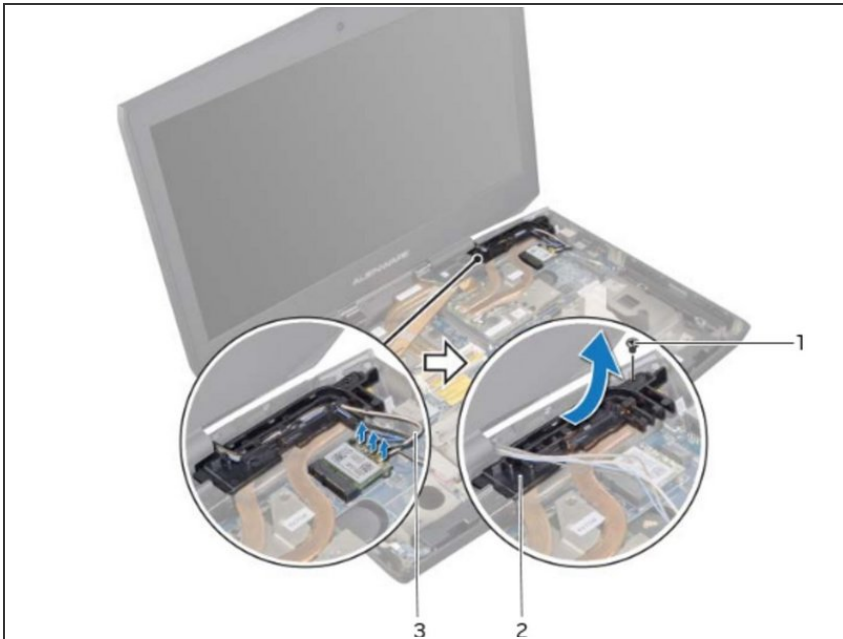
## Step 14 — Replace the Screw



- Place the routing guides on the computer base and replace the screw that secures the routing guides to the computer base.

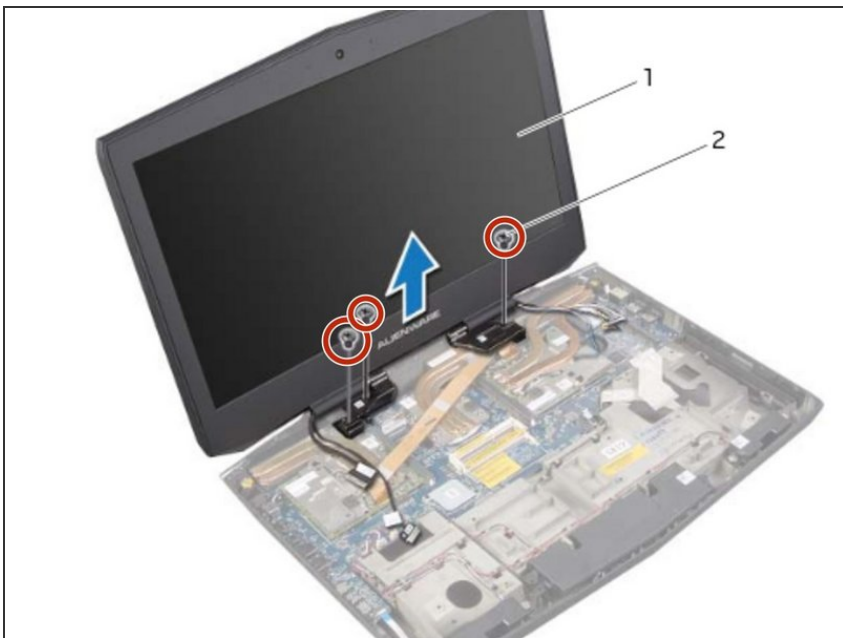


## Step 17 — Close the Display



- Close the display and turn the computer over.

## Step 18 — Replace the Screws



- Replace the screws that secure the display assembly to the computer base.