



Logitech G700s Scroll Wheel Replacement

This guide is for replacing the Scroll wheel of you Logitech G700s

Written By: Chase Tisinger



INTRODUCTION

This guide will help assist replacing the scroll wheel in you Logitech G700s.



TOOLS:

- [iFixit Opening Tools](#) (1)
- [Magnetic Pickup Tool](#) (1)
- [Tweezers](#) (1)



PARTS:

- [Replacement G700s Scroll Wheel](#) (1)

Step 1 — Top Case Replacement



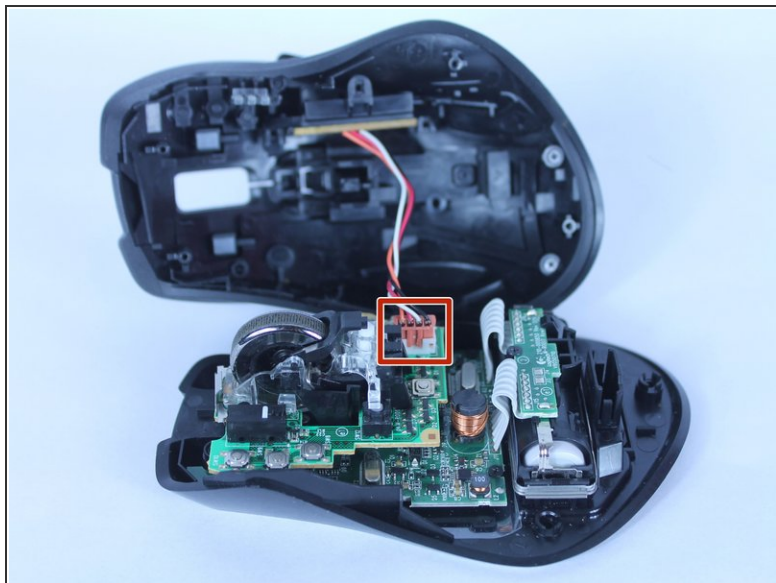
- Remove the batteries from the mouse.
- Use a plastic opening tool to peel up the four mouse feet.

Step 2



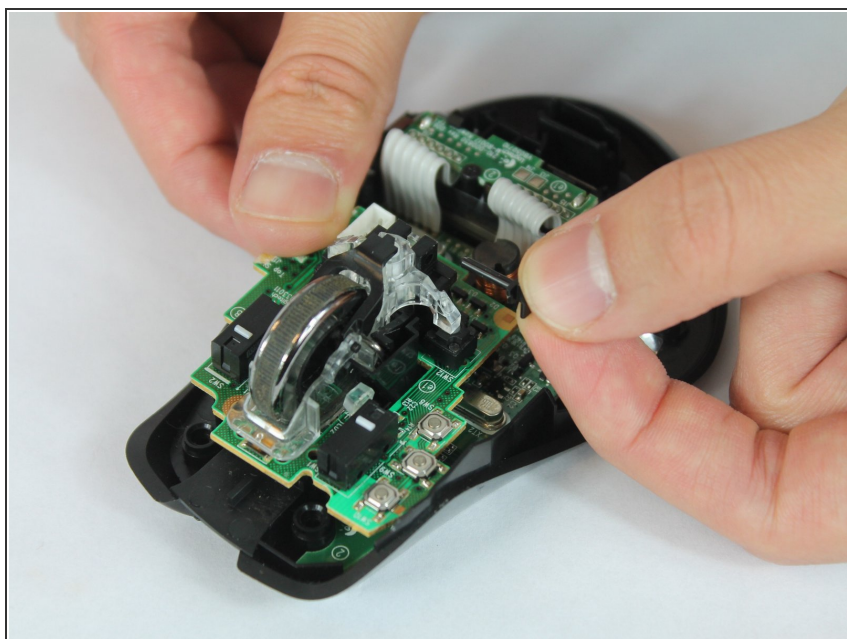
- Remove the five 5.5mm Phillips #00 screws found underneath the mouse feet.

Step 3



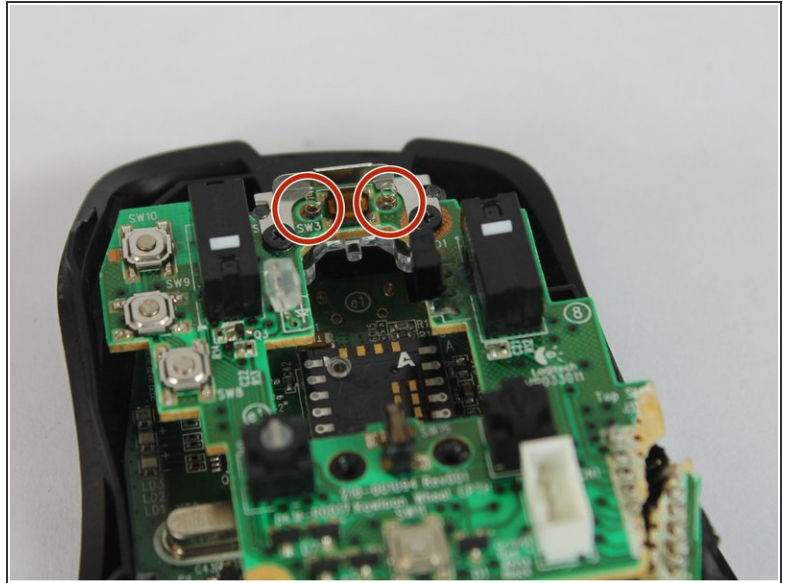
- Pull the top of the mouse off of the bottom half.
 - ⓘ There's a wire connecting the two halves.
- Unplug the programmable buttons from the motherboard.

Step 4 — Scroll Wheel




- Remove the black pin that holds the scroll wheel to the motherboard.

Step 5



- Lift the scroll wheel straight up off the motherboard.

 Be careful not to lose the two small springs! They are magnetic and could attach to any magnetic tip screw driver!

To reassemble your device, follow these instructions in reverse order.