



BEM Mojo 2 Charging Base Battery Replacement

This guide will help you if you are experiencing issues with your auxiliary charging base. Here is how to replace the auxiliary charger.

Written By: Rachel Iacoboni



INTRODUCTION

Common issues that involve the charging base battery is when it cannot hold a charge while unplugged. It is important to know the difference between replacing the charging base's battery and speaker's battery. The charging base battery should be replaced for the reason listed above while the speaker's battery should only be replaced if the speaker will not power on, even when plugged into the Micro USB charger and to an AC adapter that is plugged into the wall.

TOOLS:

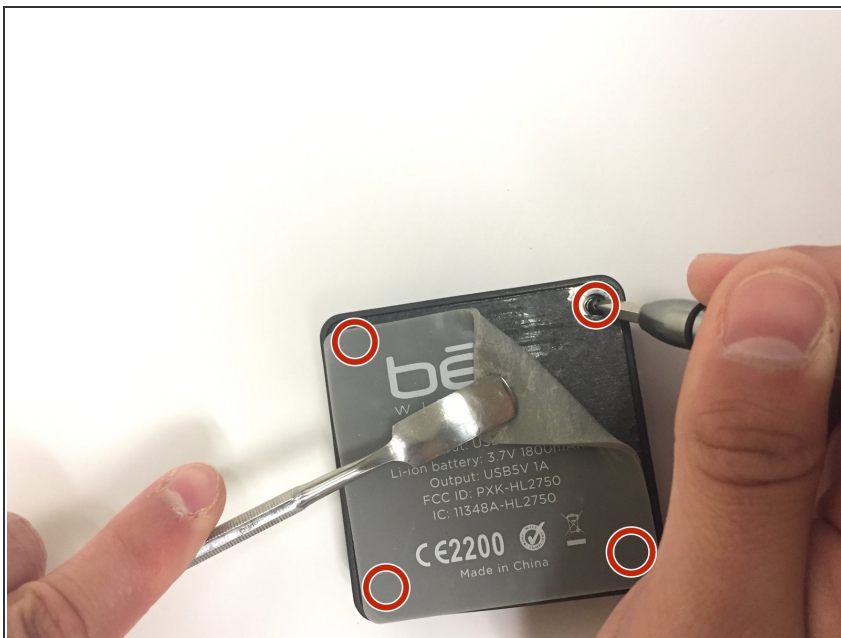
- [iFixit Opening Tools](#) (1)
 - [Tweezers](#) (1)
 - [Metal Spudger](#) (1)
 - [Phillips #0 Screwdriver](#) (1)
-

Step 1 — Charging Base Battery



- Use the metal spudger to peel back the rubber from the bottom of the auxiliary charging base to reveal the screw.

Step 2



- Use the screwdriver with the J0 bit attached to detach all four 10 mm screws from the charging base.

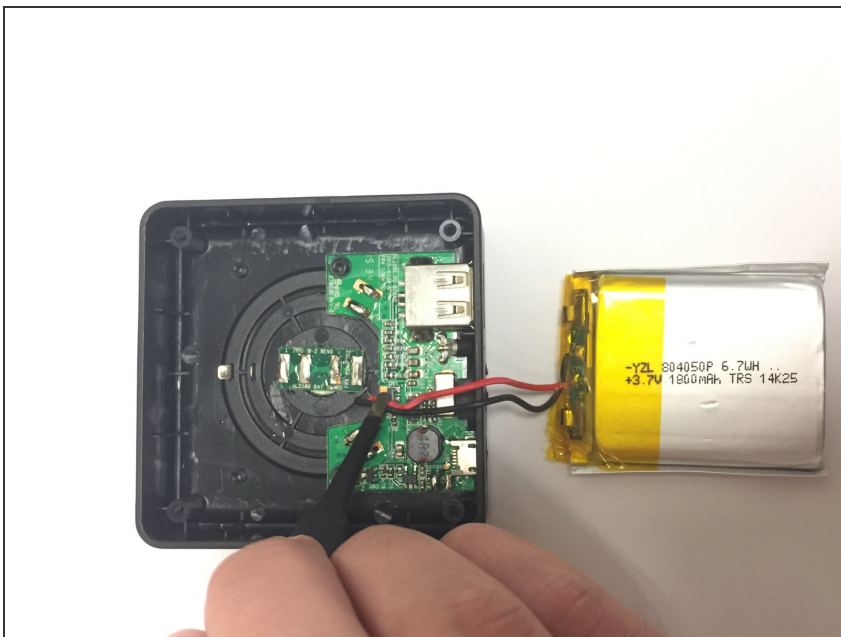
Step 3



- Pull the top cover off of the charging base to reveal the internal chip.
- Use the plastic opening tool to pry the battery from the top cover.

⚠ Caution: Be careful when detaching battery from top cover as to not damage any of the wires attached to it.

Step 4



- Use the tweezers to carefully detach the wires from the internal chip.

⚠ Caution: Be careful to not damage the internal chip when removing the wires.

To reassemble your device, follow these instructions in reverse order.