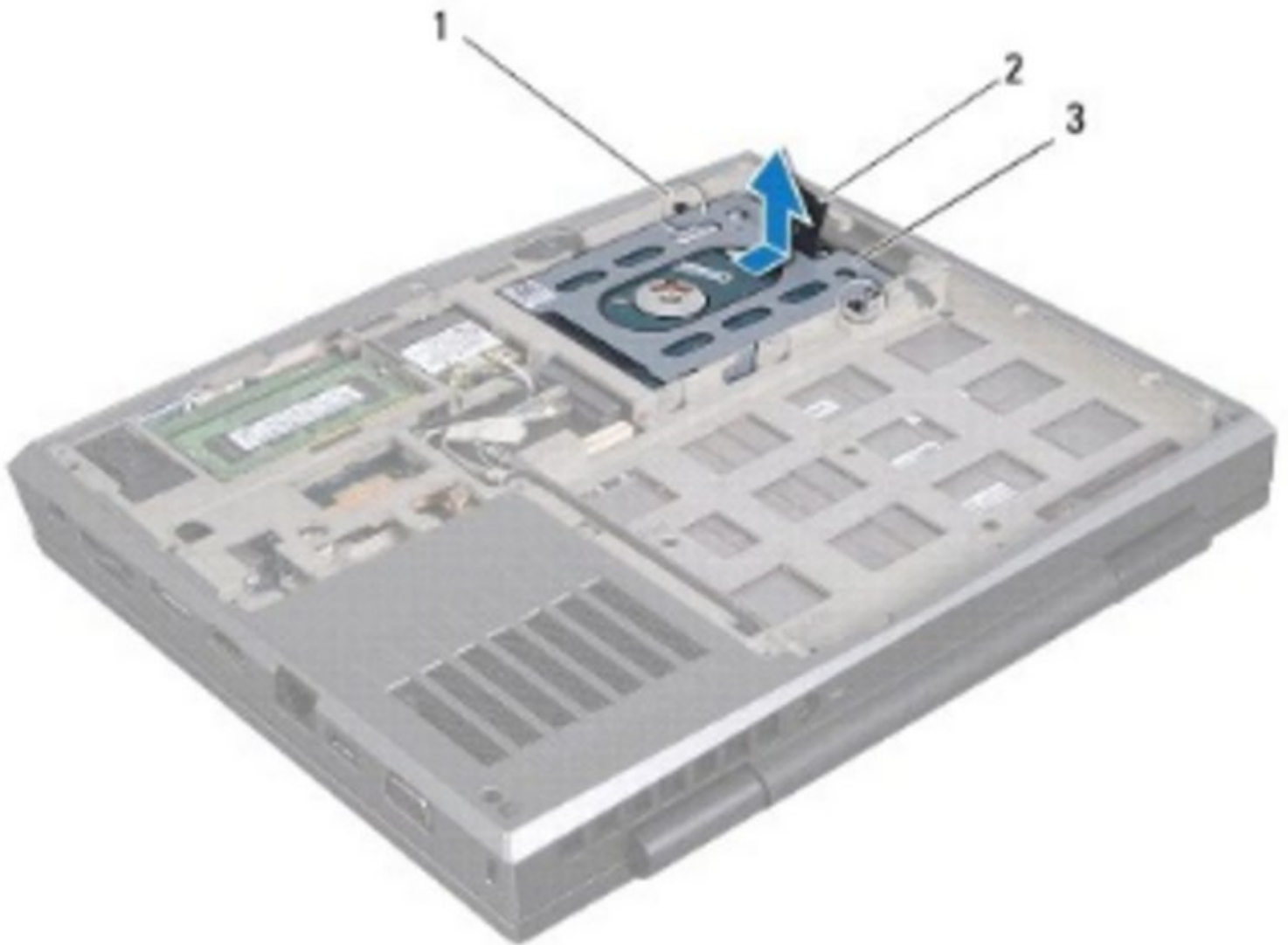




# Alienware M11x Display Assembly Replacement

Written By: darrius



---

## INTRODUCTION

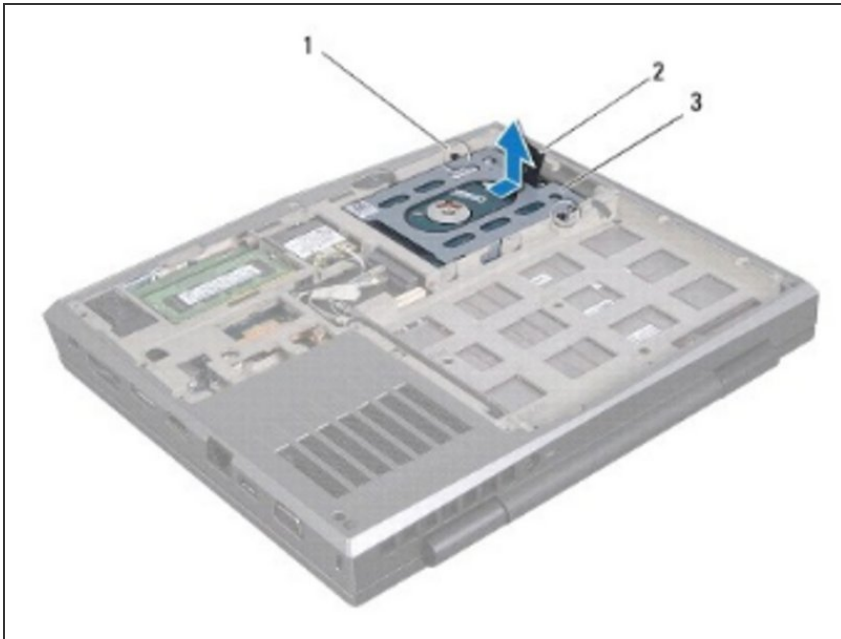
In this guide, we will be showing you how to remove and replace the Display Assembly.

---

### TOOLS:

- [Phillips #0 Screwdriver](#) (1)
-

## Step 1 — Introduction



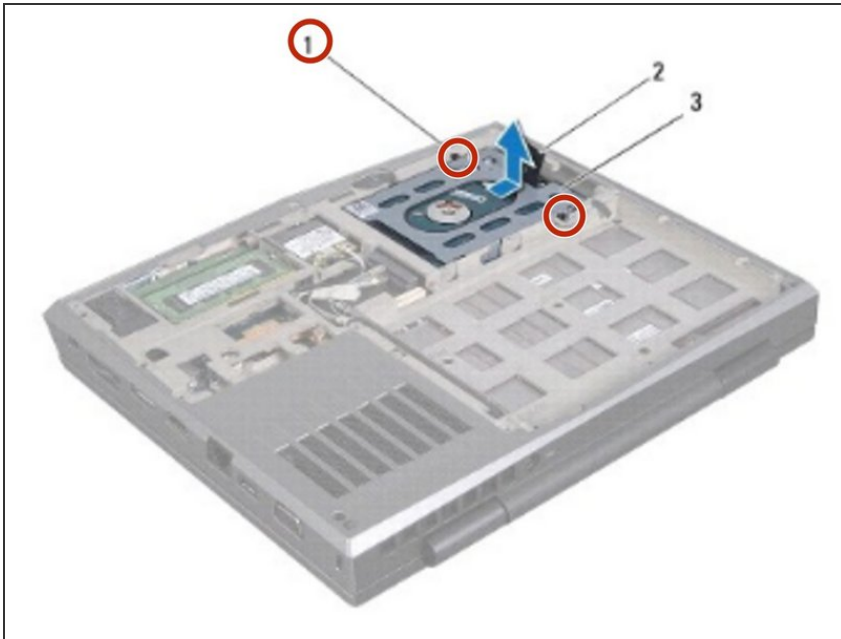
**⚠ WARNING:** Before working inside your computer, read the safety information that shipped with your computer.

**⚠ CAUTION:** To avoid electrostatic discharge, ground yourself by using a wrist grounding strap or by periodically touching an unpainted metal surface (such as a connector on your computer).

**ⓘ NOTE:** Dell or Alienware does not guarantee compatibility or provide support for hard drives from sources other than Dell.

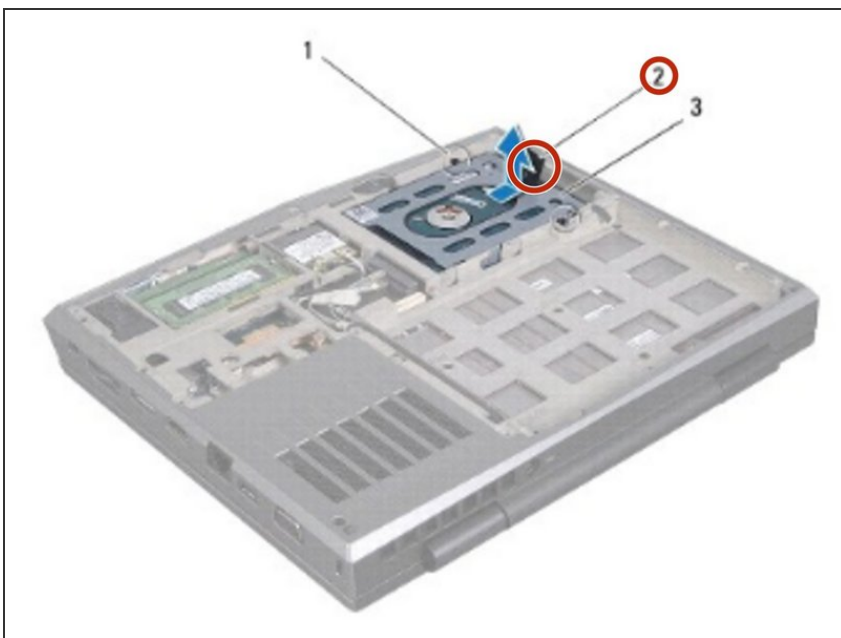
**ⓘ NOTE:** If you are installing a hard drive from a source other than Dell or Alienware, you need to install an operating system, drivers, and utilities on the new hard drive.

## Step 2 — Loosen the Screws



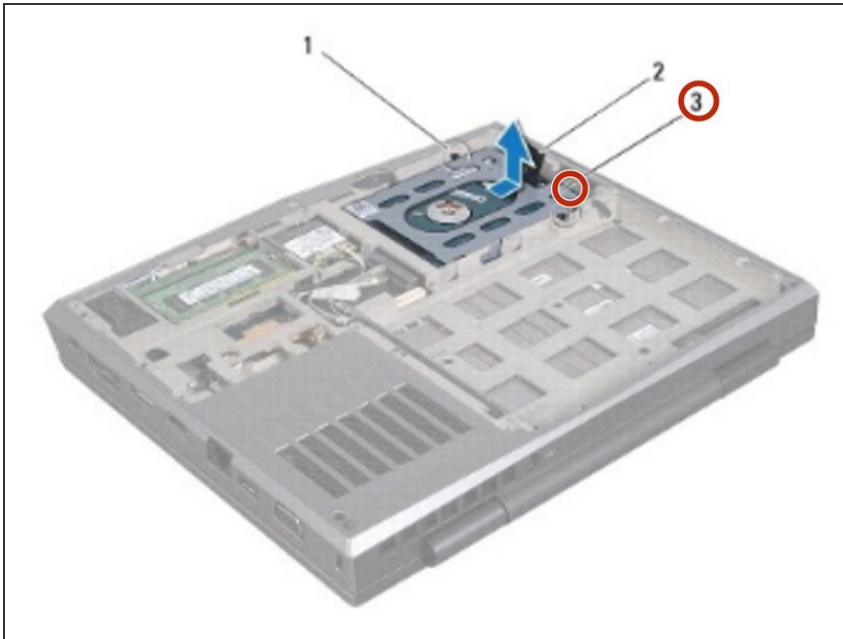
- Loosen the two captive screws that secure the hard-drive assembly to the computer base.

## Step 3 — Disconnecting the Hard-Drive



- Using the pull-tab, pull the hard-drive assembly to disconnect the hard-drive assembly from the connector on the system board.

## Step 4 — Lifting the Hard-Drive Assembly



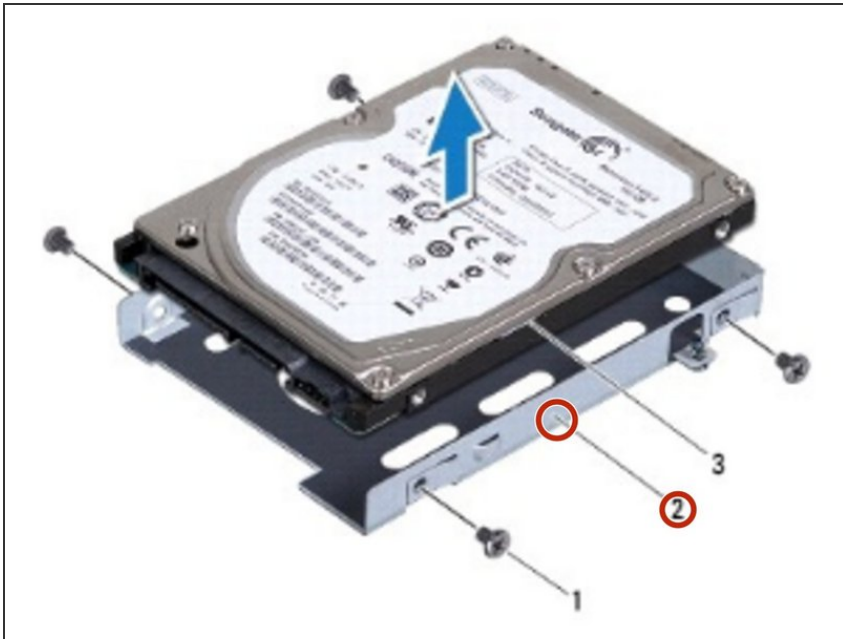
- Lift the hard-drive assembly out of the computer base.

## Step 5 — Removing the Screws from the Hard-Drive



- Remove the four screws that secure the hard drive to the hard-drive bracket.

## Step 6 — Removing the Bracket



- Lift the hard drive away from the hard-drive bracket.

## Step 7 — Placing the Hard-Drive



- Place the **NEW** hard drive in the hard-drive bracket.

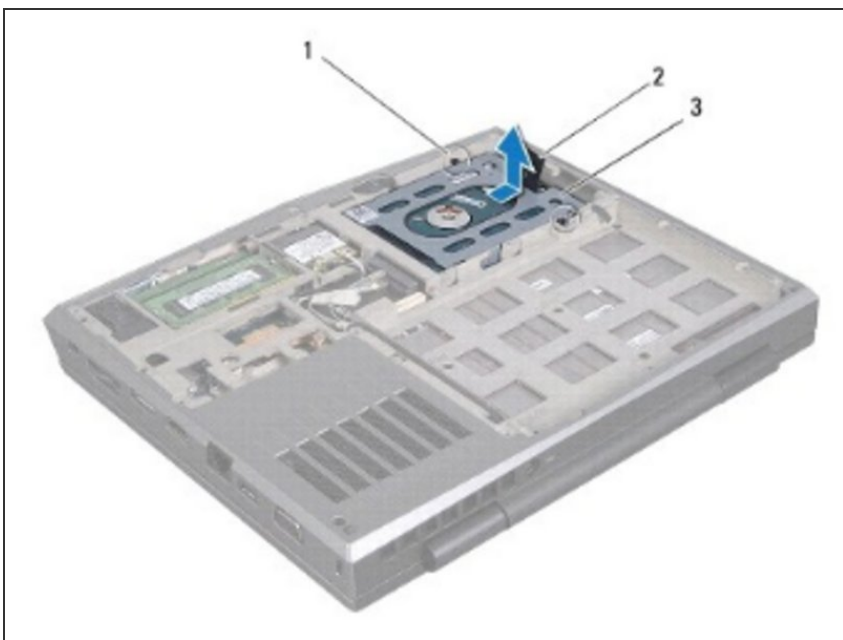


## Step 8 — Replace the Screws



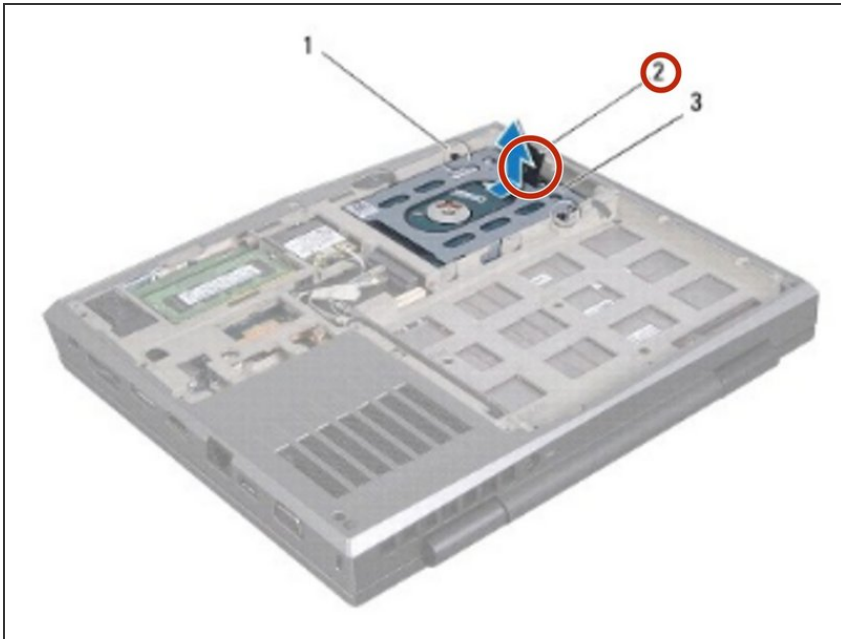
- Replace the four screws that secure the hard-drive to the hard-drive bracket.

## Step 9 — Placing the Hard-Drive



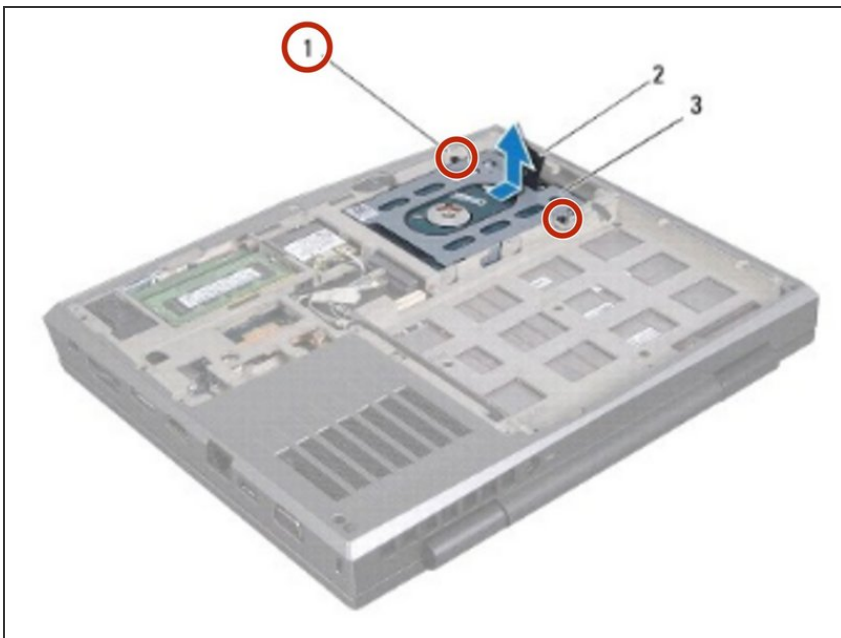
- Place the hard-drive assembly in the computer base.

## Step 10 — Connecting the Hard-Drive Assembly



- Use the pull-tab to push the hard drive assembly and connect it to the connector on the system board.

## Step 11 — Securing the Screws



- Tighten the two captive screws that secure the hard-drive assembly to the computer base.