



Asus R510LA-RS71 Hard Drive Replacement

Replacement of the HDD of the Asus R510LA-RS71. This is a simple guide and will only take a few moments to complete.

Written By: Spencer Whitworth



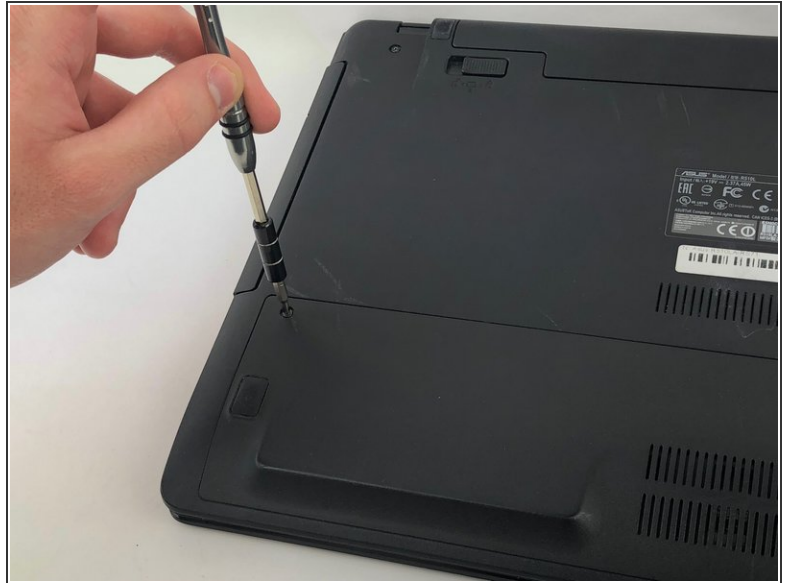
INTRODUCTION

In the event of system errors in crashes, your hard drive may be damaged or corrupted. Using a 1.5mm flathead screwdriver, you can quickly remove and replace this device's hard drive. It is fairly small and compact, so this particular guide should not take you longer than five minutes.

TOOLS:

- [JIS #00 Screwdriver](#) (1)
-

Step 1 — Hard Drive



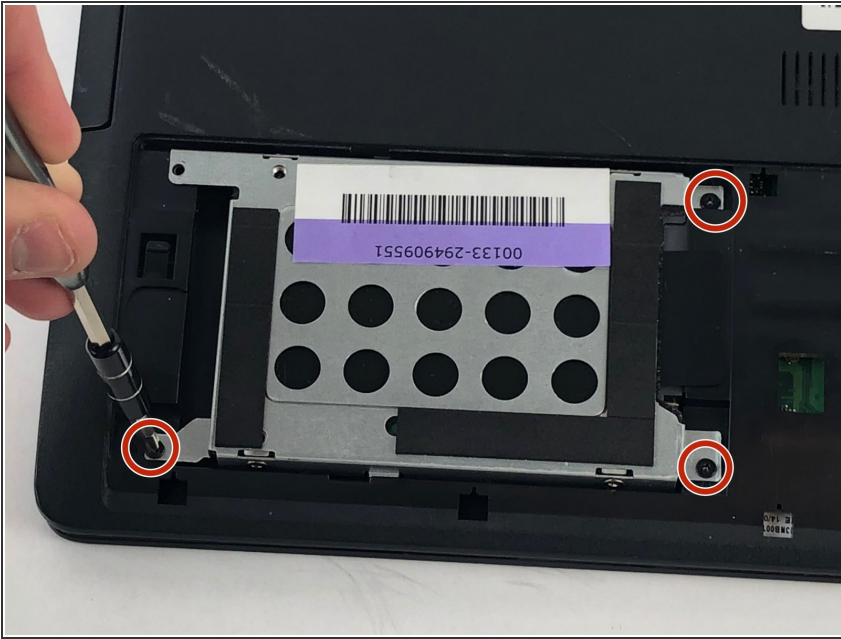
- Remove the bottom left and right 12.7mm screws using a JIS 00 screwdriver.

Step 2



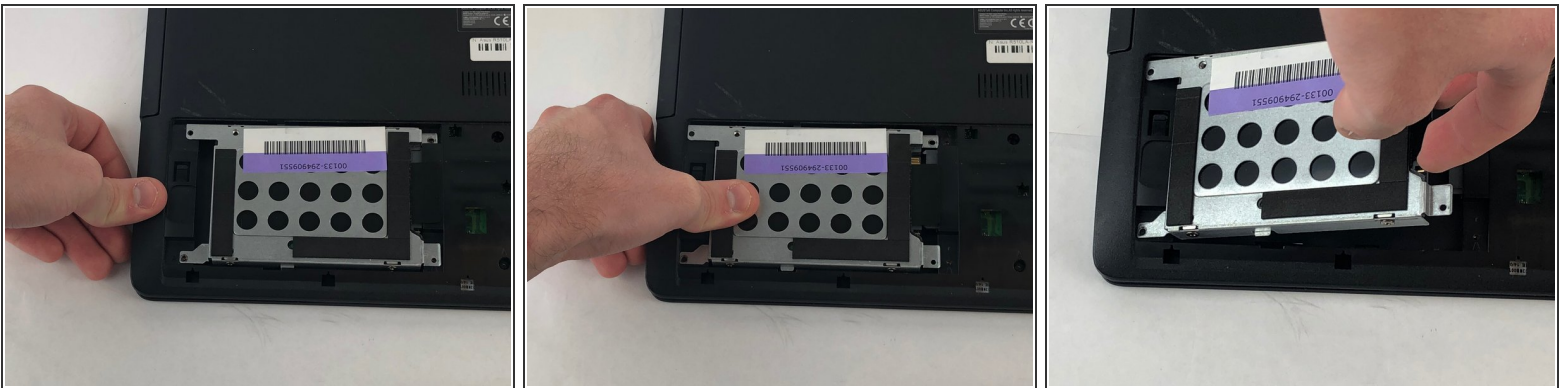
- Slide back and remove the protective plating on the back of the laptop.

Step 3



- Again with the JIS 00, unscrew the three 5.7mm screws holding the hard drive in place. These can be found on small brackets on the four corners of the drive.

Step 4



- Slide the hard drive to the left, then remove it by lifting it from the compartment it is resting in.

To reassemble your device, follow these instructions in reverse order.