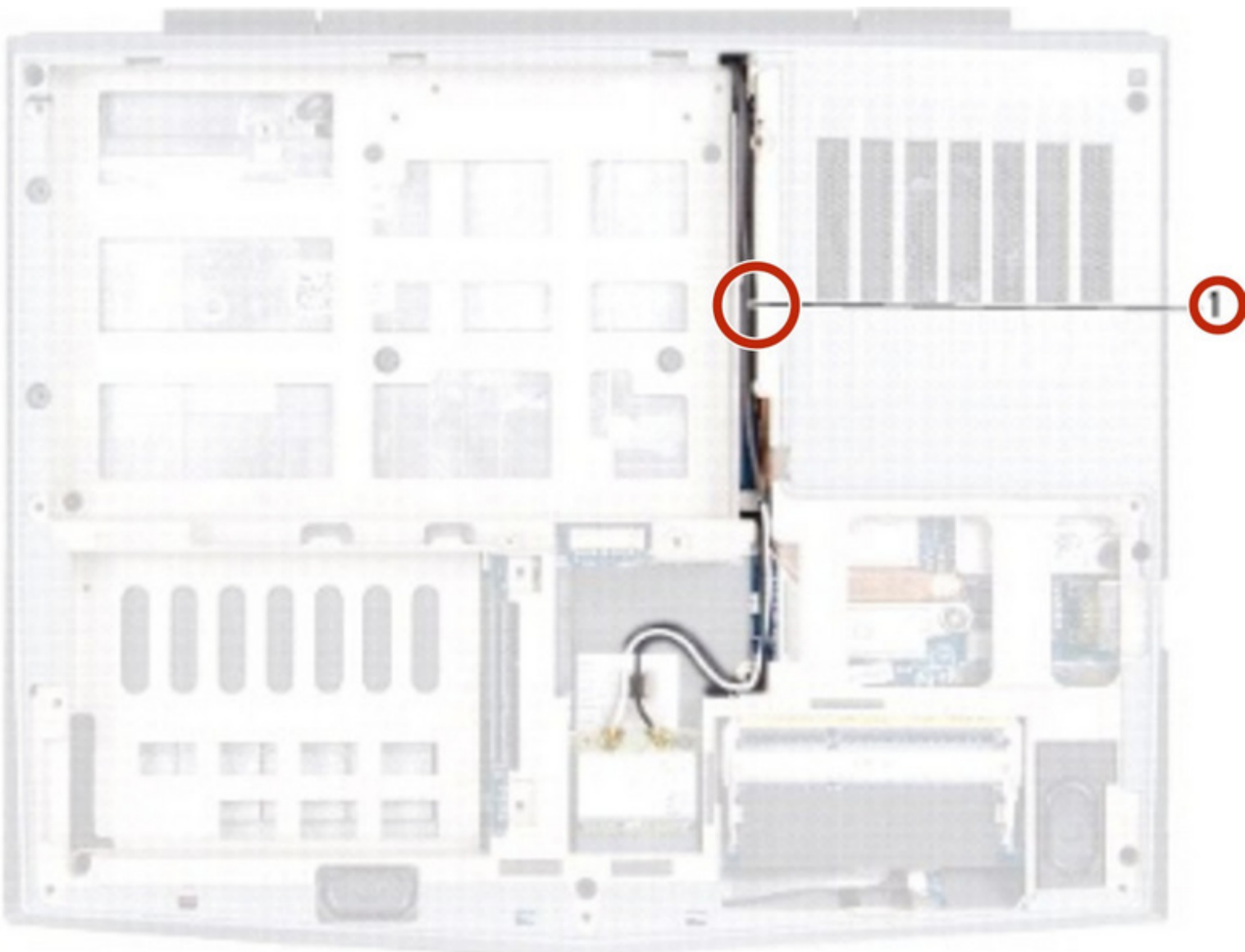




Alienware M11xR2 Display Assembly Replacement

Written By: darrius



INTRODUCTION

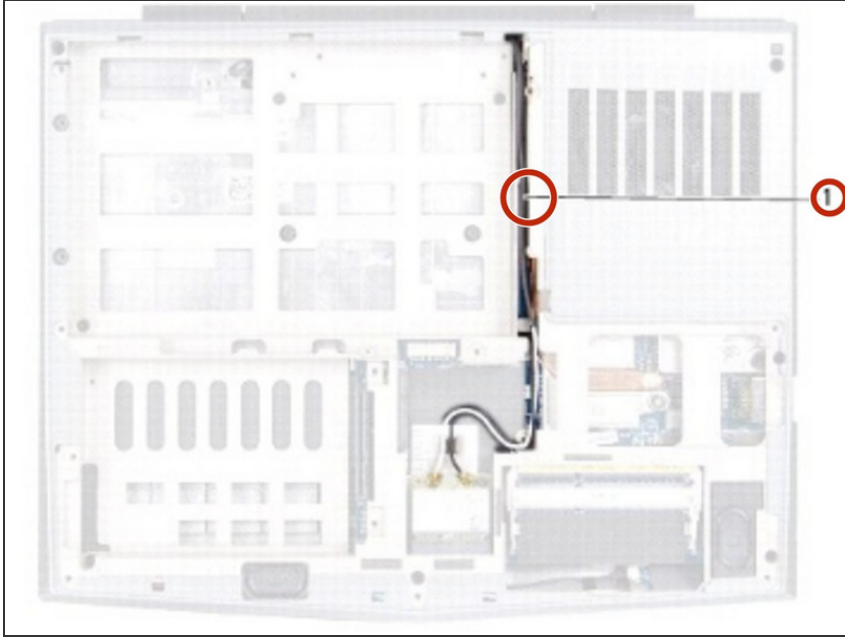
How to remove and replace the Display Assembly.



TOOLS:

- [Phillips #0 Screwdriver](#) (1)
-

Step 1 — Disconnecting Antenna Cable

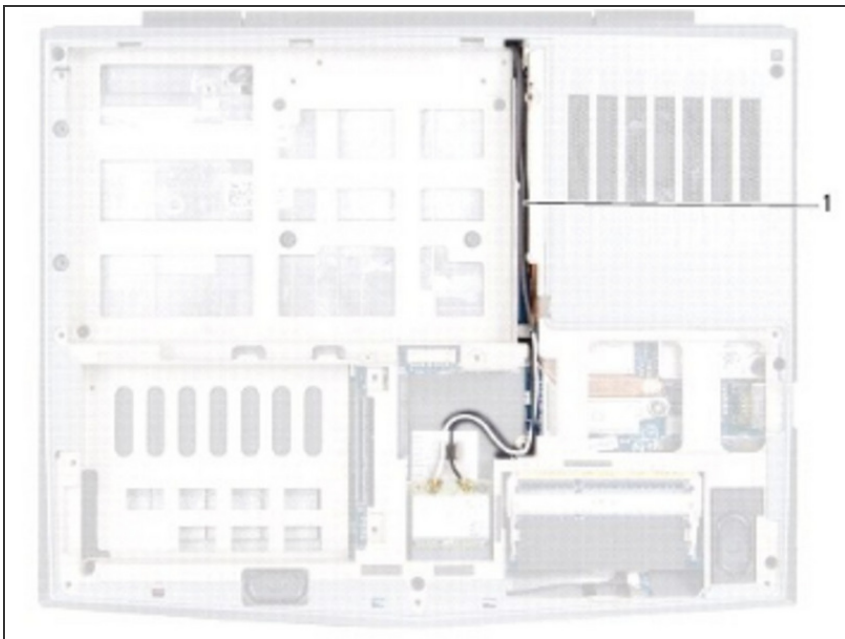


⚠ WARNING: Before working inside your computer, read the safety information that shipped with your computer.

⚠ CAUTION: To avoid electrostatic discharge, ground yourself by using a wrist grounding strap or by periodically touching an unpainted metal surface (such as a connector on your computer).

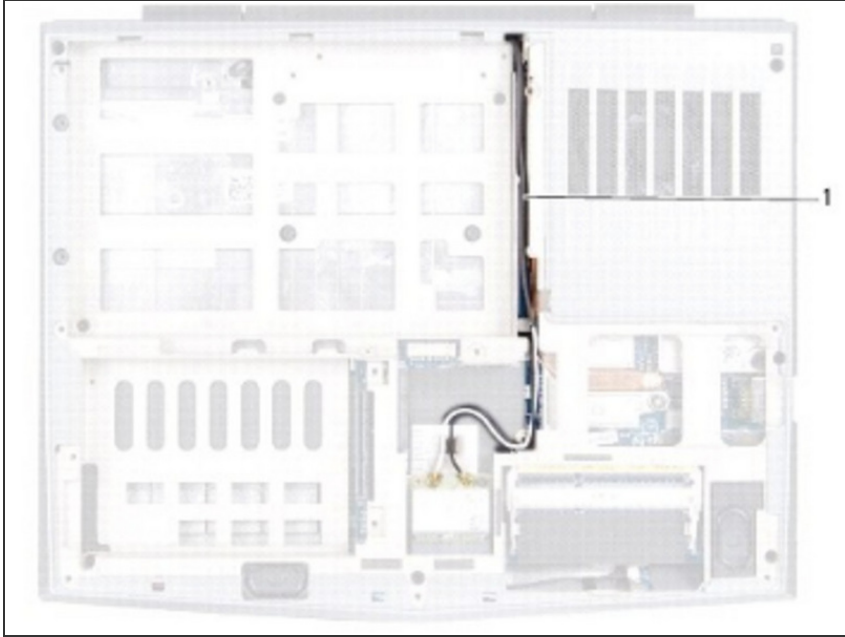
- Disconnect the antenna cables from the Mini-Card(s).

Step 2 — Removing Mimi Card



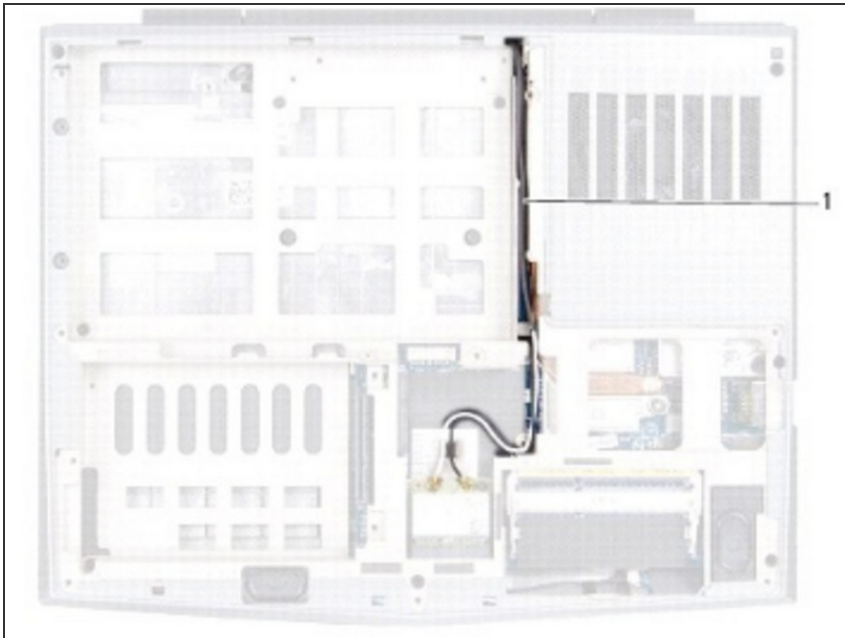
- The routing of the Mini-Card antenna cables and remove them from the routing guides on the computer base.

Step 3 — Turning Over The Computer



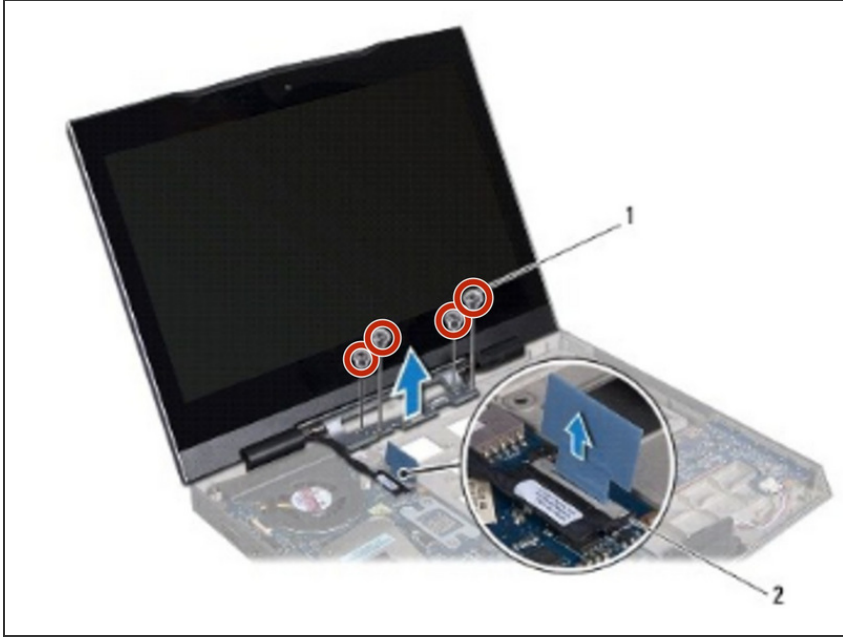
- Turn the computer over and open the display as far as possible.

Step 4 — Pulling The Pull-Tab



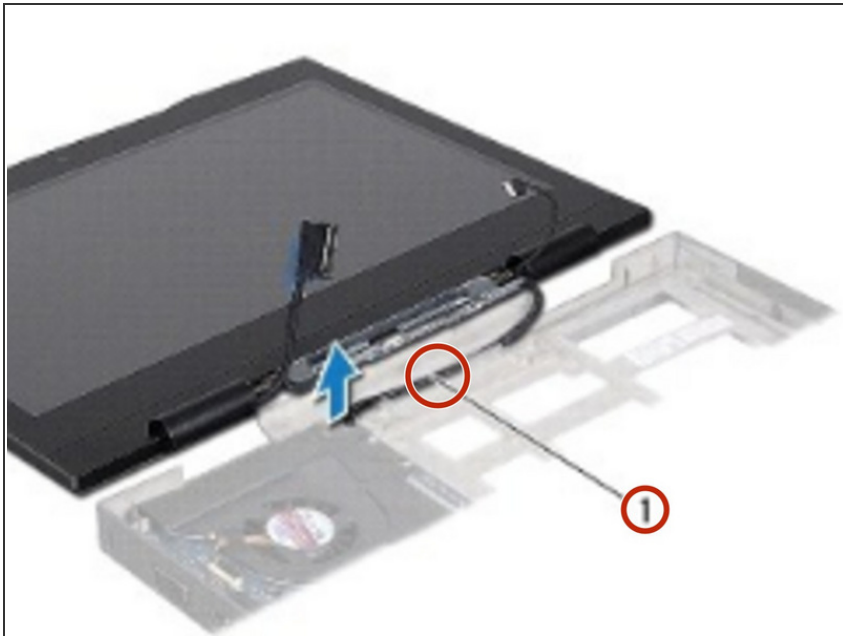
- Pull the pull-tab to disconnect the display cable from the connector on the system board.

Step 5 — Removing Screws



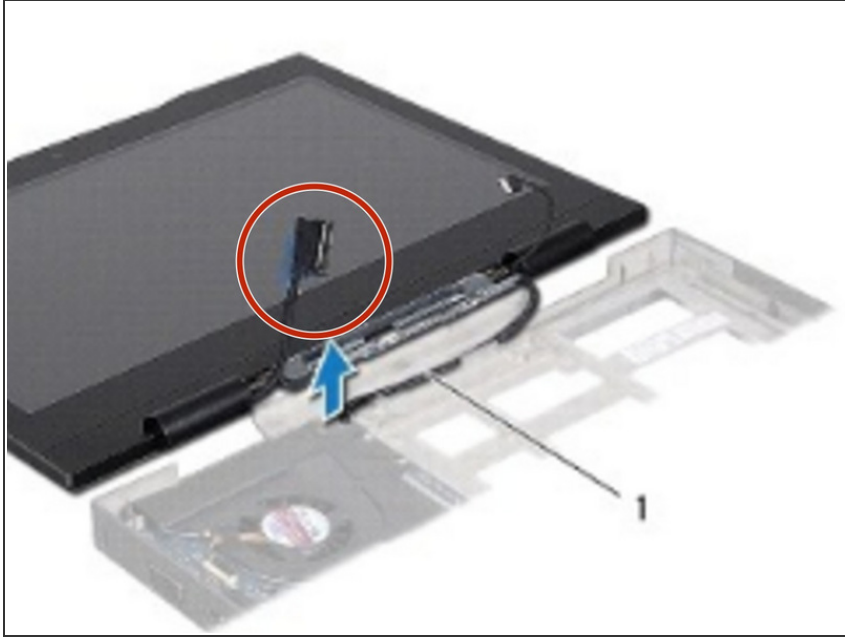
- Remove the four screws that secure the display assembly to the computer base.

Step 6 — Removing Mini-Card cable



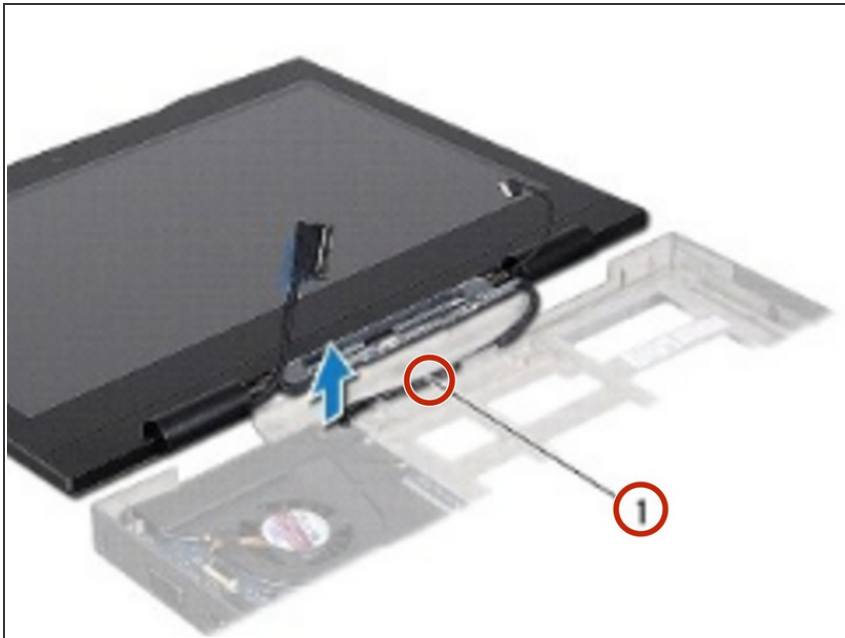
- Gently slide the Mini-Card antenna cables out through the slot on the computer base.

Step 7 — Lifting Display Assembly



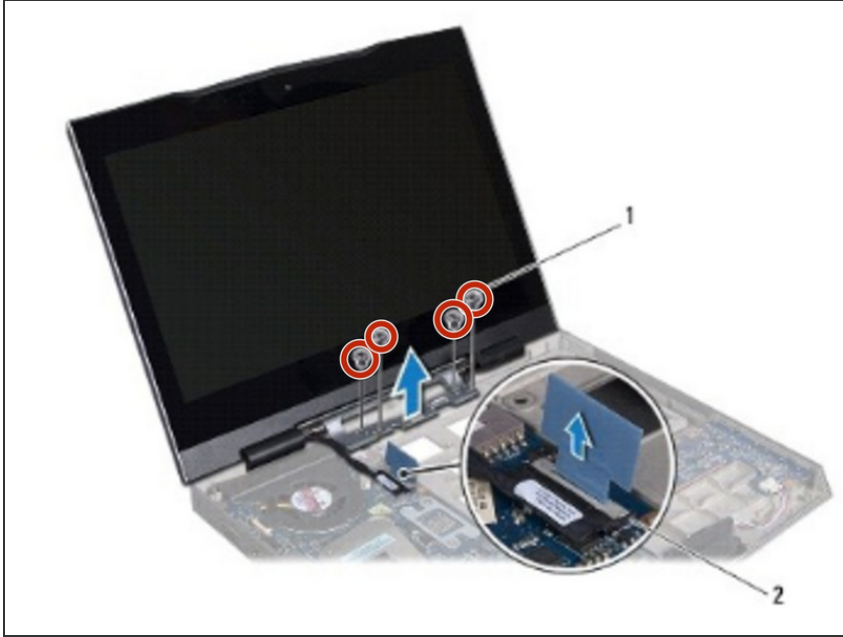
- Lift the display assembly off the computer.

Step 8 — Sliding New Cables



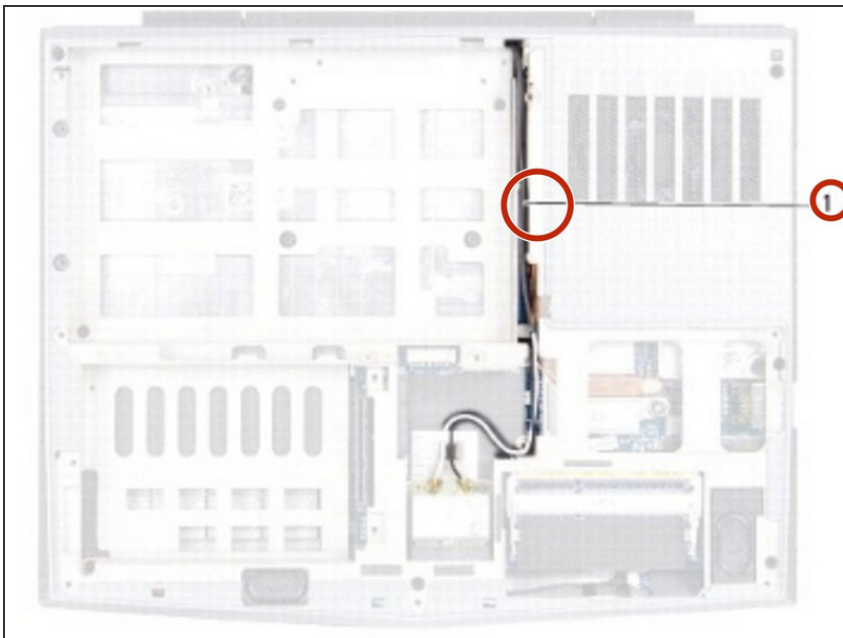
- Slide the antenna cables in through the slot on the computer base.

Step 9 — Securing Screws



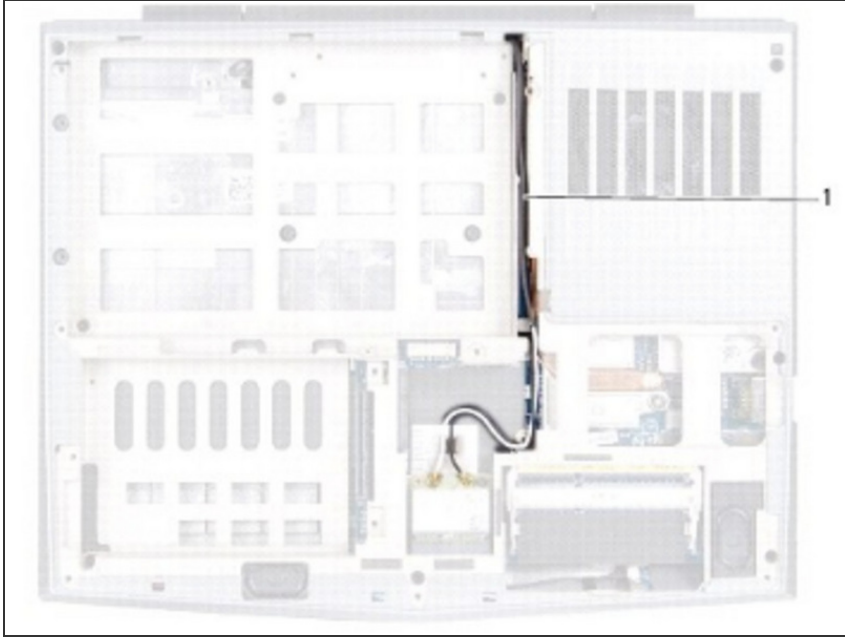
- Place the **NEW** display assembly in position and replace the four screws that secure the display assembly to the computer base.

Step 10 — Connecting New Display Cable



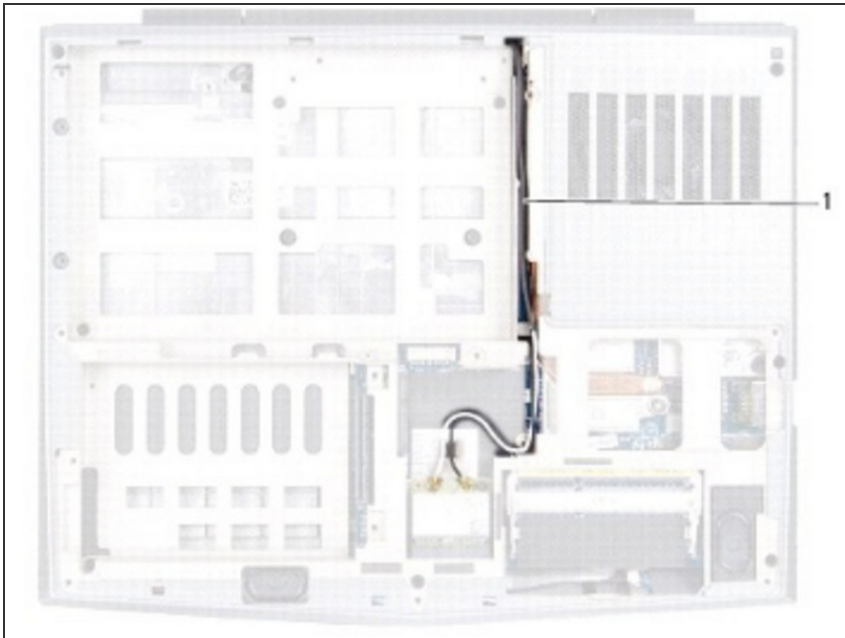
- Connect the display cable to the connector on the system board.

Step 11 — Rerouting The Mini-Card Cable



- Turn the computer over and route the Mini-Card antenna cables through the routing guides on the computer base.

Step 12 — Connecting Mini-Card Cables



- Connect the Mini-Card antenna cables to the Mini-Card(s).