



# Cuisinart DCC-1200 Hose Replacement

This guide will show how to replace internal hoses of the Cuisinart DCC-1200 coffee maker to prevent water leakage.

Written By: Austin Wheaton



---

## INTRODUCTION

Does your Cuisinart coffee maker leak water from the bottom of the machine? This guide will show how to fix the problem by checking and replacing the internal hoses. You will need a tweezers and the bit driver with the T10 driver bit.

---

### TOOLS:

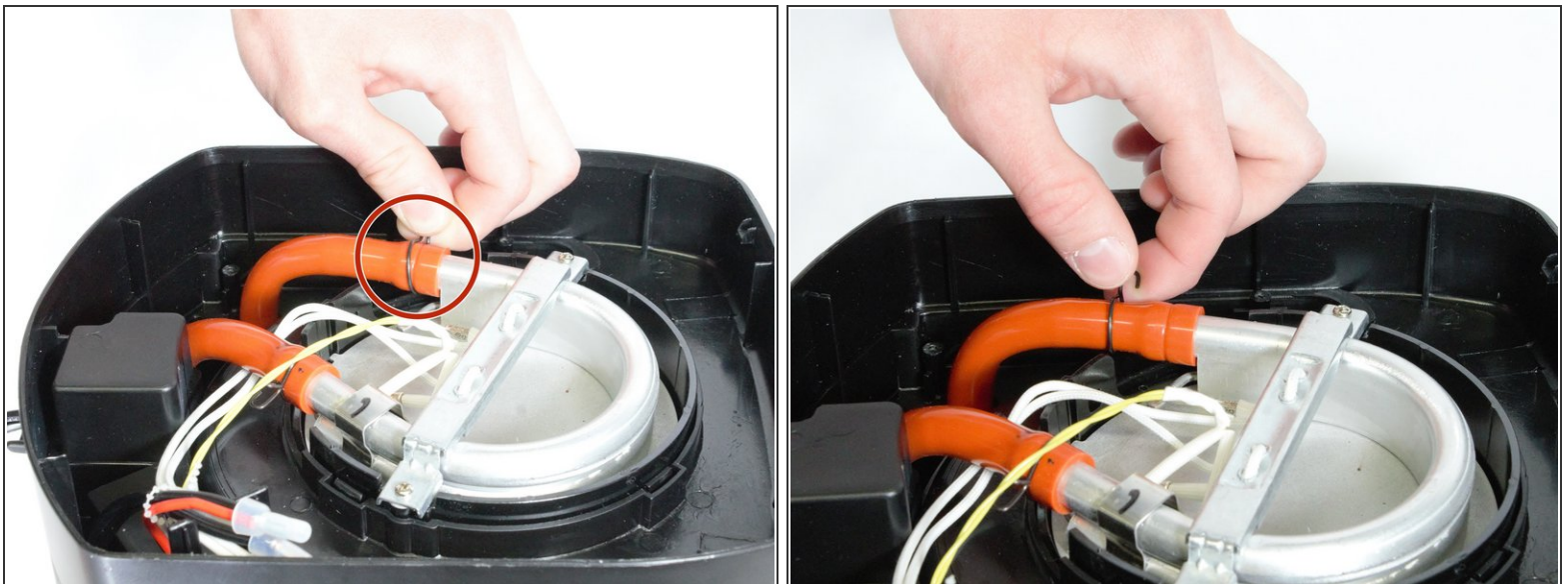
- [Tweezers](#) (1)
  - [T10 Torx Screwdriver](#) (1)
-

## Step 1 — Water Hoses



- Flip the coffee maker over so the bottom is facing upwards.
- Use the screwdriver with size 4 extension with the T10 Torx bit to remove all four 17 mm long screws.
- Lift the bottom cover off the bottom of the coffee maker.

## Step 2



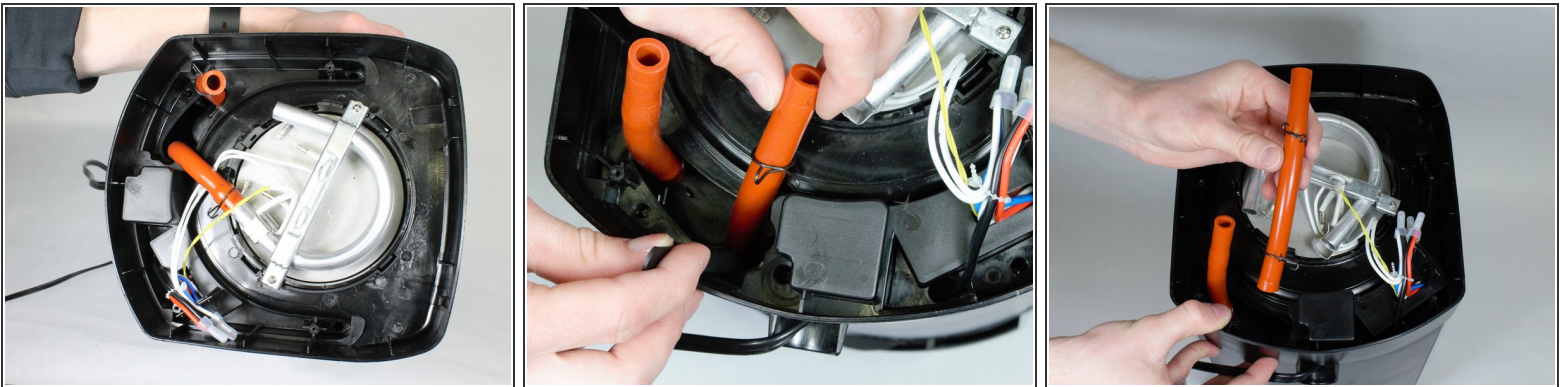
- Gently squeeze the hose clamps together and begin moving the metal clamp away from the heating element.

### Step 3



- Gently pull on the loose hose to remove it from the heating element.

### Step 4



- Squeeze the clamp with tweezers on the opposite end of the hose from the one you already removed.
- Once the clamp is free, gently pull upwards on the hose to remove it.
- Replace the disconnected hose with a new functioning hose.

To reassemble your device, follow these instructions in reverse order.