



# Heating Element Contacts

This guide will show how to reconnect contacts to the heating element if they have become disconnected.

Written By: Austin Wheaton



## INTRODUCTION

Is your Cuisinart coffee maker producing cold coffee because the heating element contacts are disconnected? If so, this guide will provide instructions on how to reconnect contacts to the heating element. To complete this task you will need a soldering iron, soldering wire and a T10 driver bit.

---



### TOOLS:

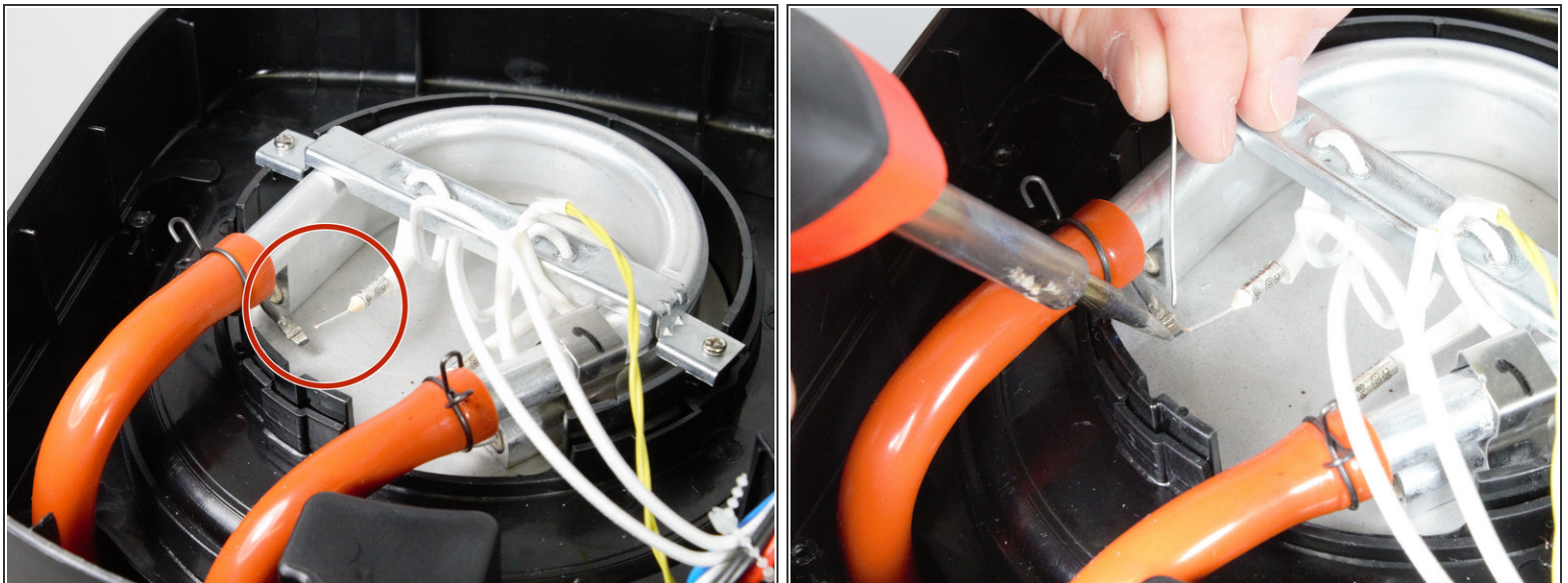
- [Portable Soldering Iron](#) (1)
  - [T10 Torx Screwdriver](#) (1)
-

## Step 1 — Heating Element Contacts




- Flip the coffee maker over so the bottom is facing upwards.
- Use the screwdriver with size 4 extension with the T10 Torx bit to remove all four 17 mm long screws.
- Lift the bottom cover off the bottom of the coffee maker.

## Step 2



- If heating element contacts are disconnected, use soldering iron with soldering wire to re-bond the contacts.

 Solder iron can cause burns if used improperly

To reassemble your device, follow these instructions in reverse order.

This document was last generated on 2018-06-18 06:08:20 PM.