



Fujifilm FinePix Z1 LCD Screen Replacement

This guide will help you in replacing a faulty or damaged LCD Screen.

Written By: Carra



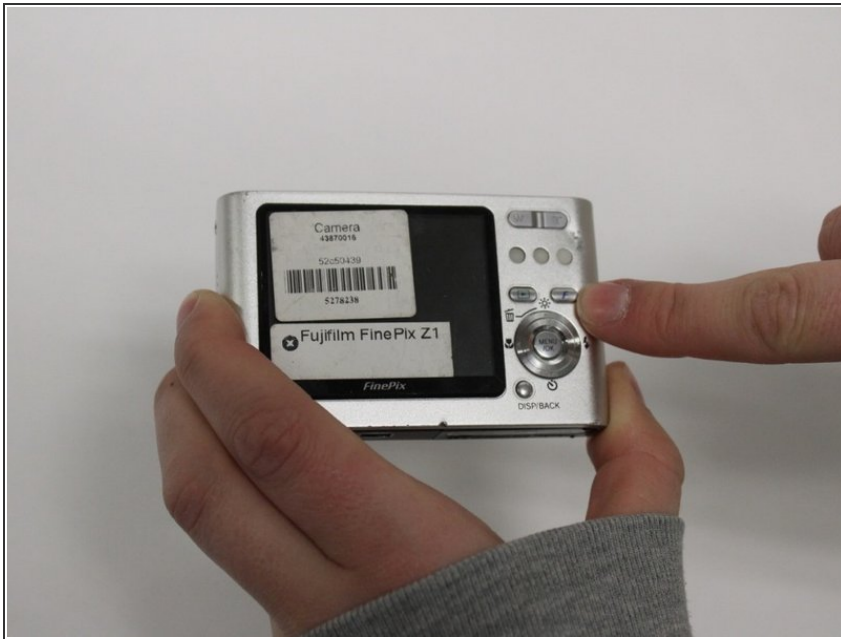
INTRODUCTION

The LCD screen on the Fujifilm FinePix Z1 is durable but in unfortunate events can still be damaged. If the screen has had water damaged or has been cracked in some way, this guide will aid in removing the screen and replacing it with a new one.

TOOLS:

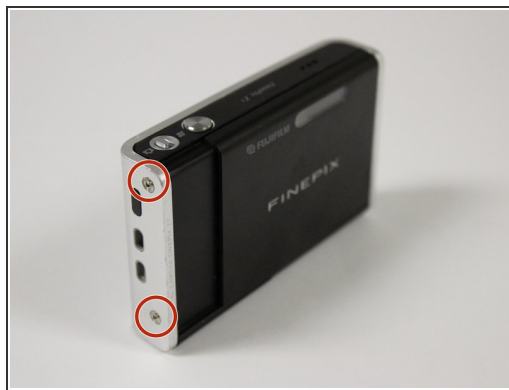
- [Desoldering Braid](#) (1)
 - [Solder](#) (1)
 - [Soldering Iron](#) (1)
 - [Staples](#) (1)
 - [Hex 0.7 screwdriver](#) (1)
-

Step 1 — LCD Screen



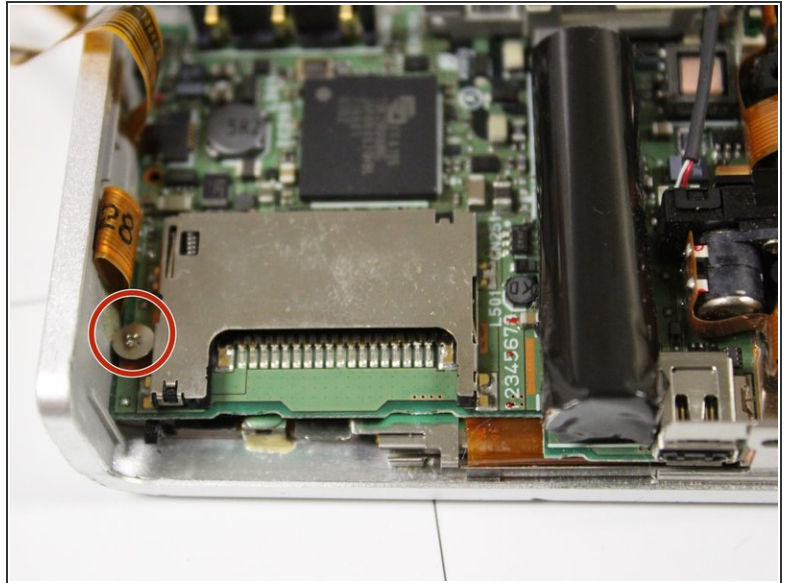
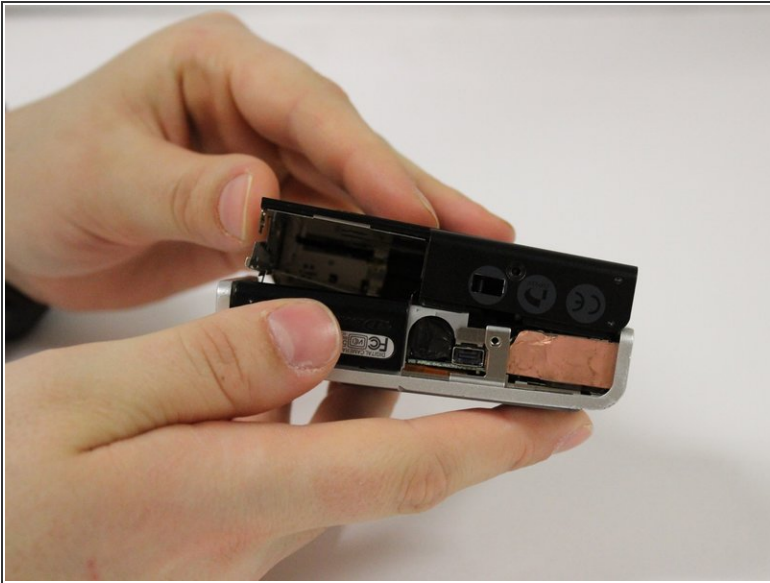
- Ensure that the camera is charged and not on PowerSave mode.
- If the camera is charged and on, a faulty LCD Screen could be caused by a scratch or water damage. Also, trauma to the camera could cause the screen to shatter. In any of these cases, the screen will need to be replaced.
- Make sure that the orange thin cable is appropriately attached.

Step 2



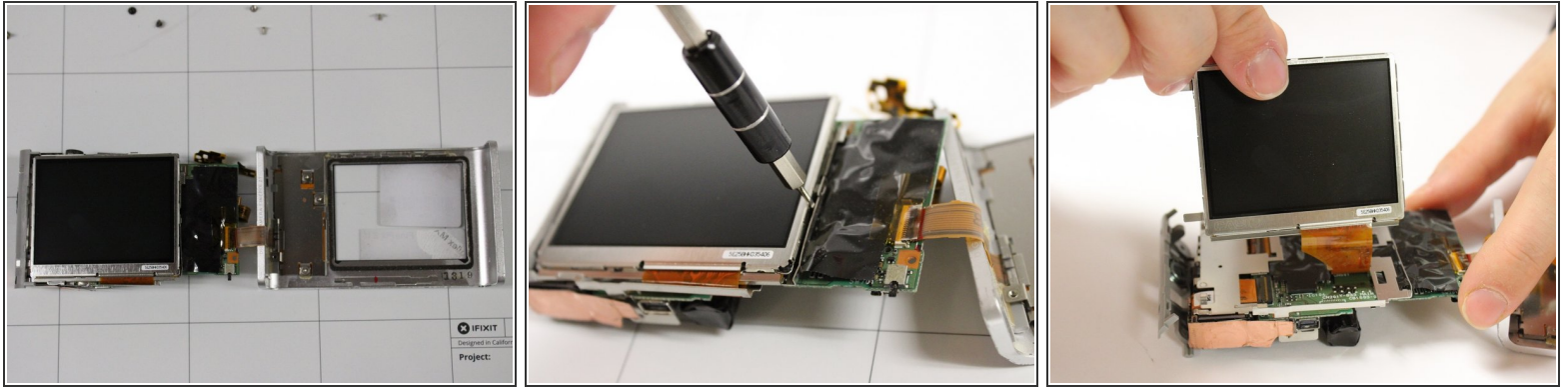
- Open the camera by removing the 5 external 4.0 mm screws with the 1.0 flathead.

Step 3



- Gently pull the components apart.
- Remove the 2.0mm screw to the left of the SD card.
- The LCD screen is located on the back of the circuit board and can be accessed after removing the internal components.

Step 4



- Use the PH00 to pry open the display screen of the camera.
- Expose the display screen and make sure the cable connecting the screen and the camera are separated. Remember where the cable connection is located to attach the replacement screen.
- ⓘ Use the [How to Solder and Desolder Connections Guide](#) to remove the screen from the device.

To reassemble your device, follow these instructions in reverse order.