



Fujifilm FinePix Z1 Lens Barrier Replacement

This guide will help you replace or fix a faulty Lens Barrier.

Written By: Carra



INTRODUCTION

The Lens Barrier is used to operate the camera and to power it on and off. If the Lens Barrier is stuck, the camera is likely not working correctly. The Lens Barrier could have a damaged cable connector, a jammed spring, or it could have a foreign object wedged underneath the piece. Use this guide to help repair your Lens Barrier to restore your Fujifilm FinePix Z1.

TOOLS:

- [1.0 mm Flathead Screwdriver](#) (1)
 - [Hex 0.7 screwdriver](#) (1)
-

Step 1 — Lens Barrier



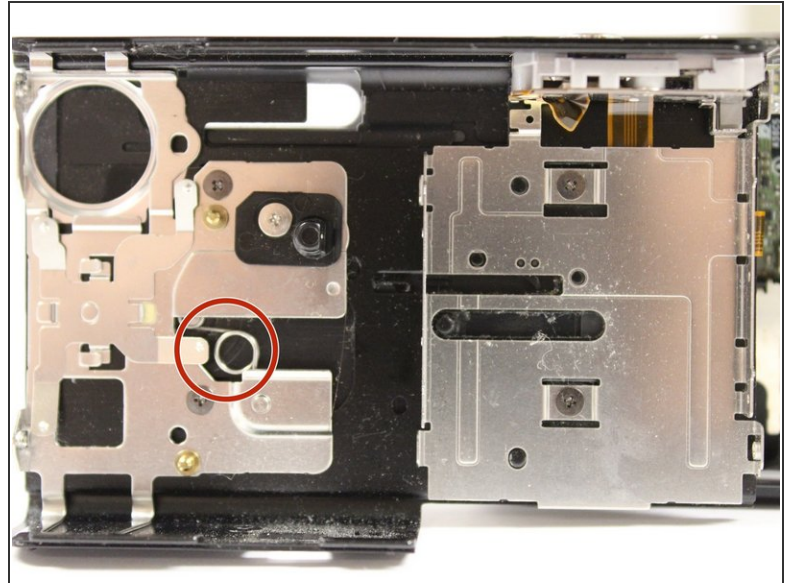
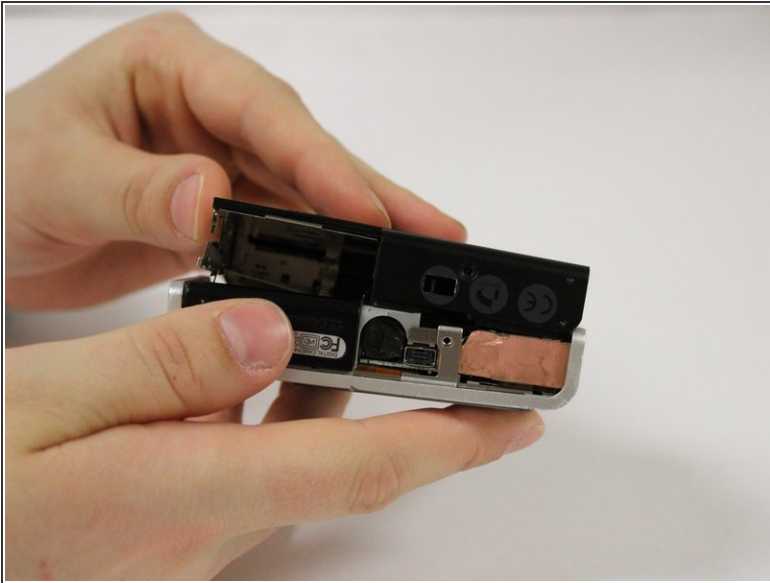
- Find the front face of the camera and test to see if the Lens Barrier will slide.
- Make sure items are not trapped or stuck between the Lens Barrier and the camera lens.
- Check to see if the camera power turns on by sliding the barrier. If not check to see if the lens barrier is on the correct track.

Step 2



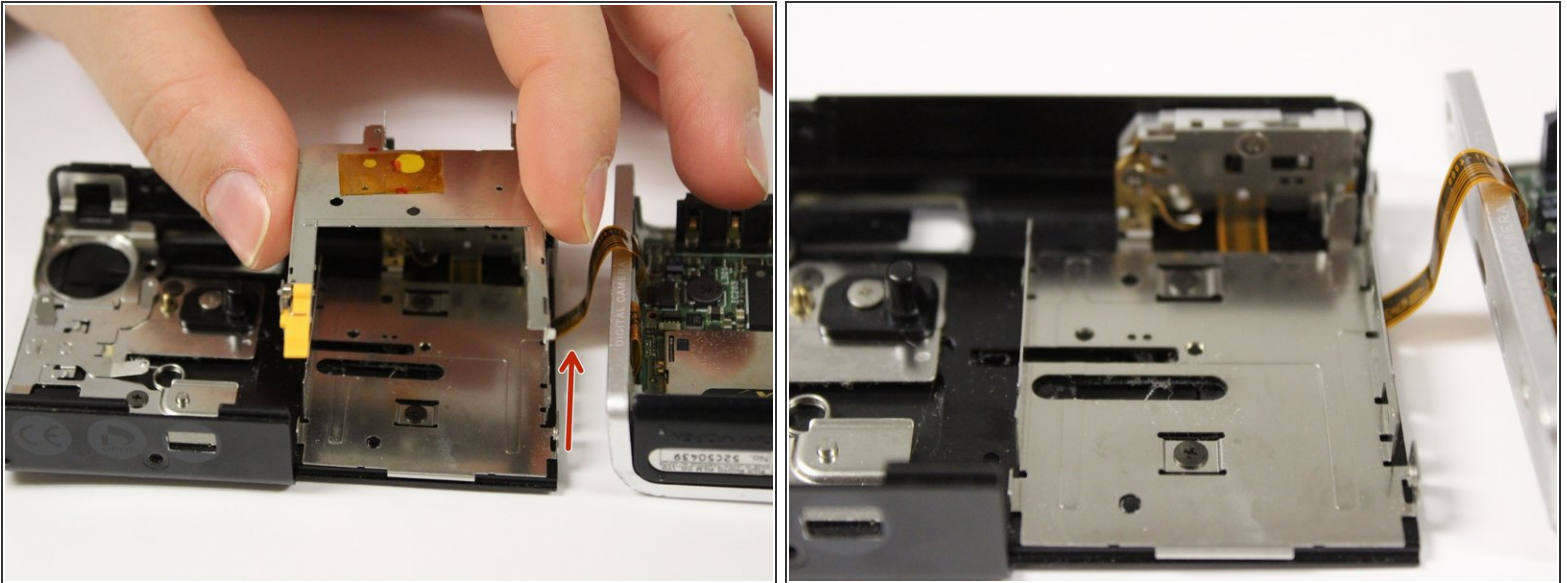
- Open the camera by removing the 5x4.0 mm external screws with the 1.0 flathead.

Step 3



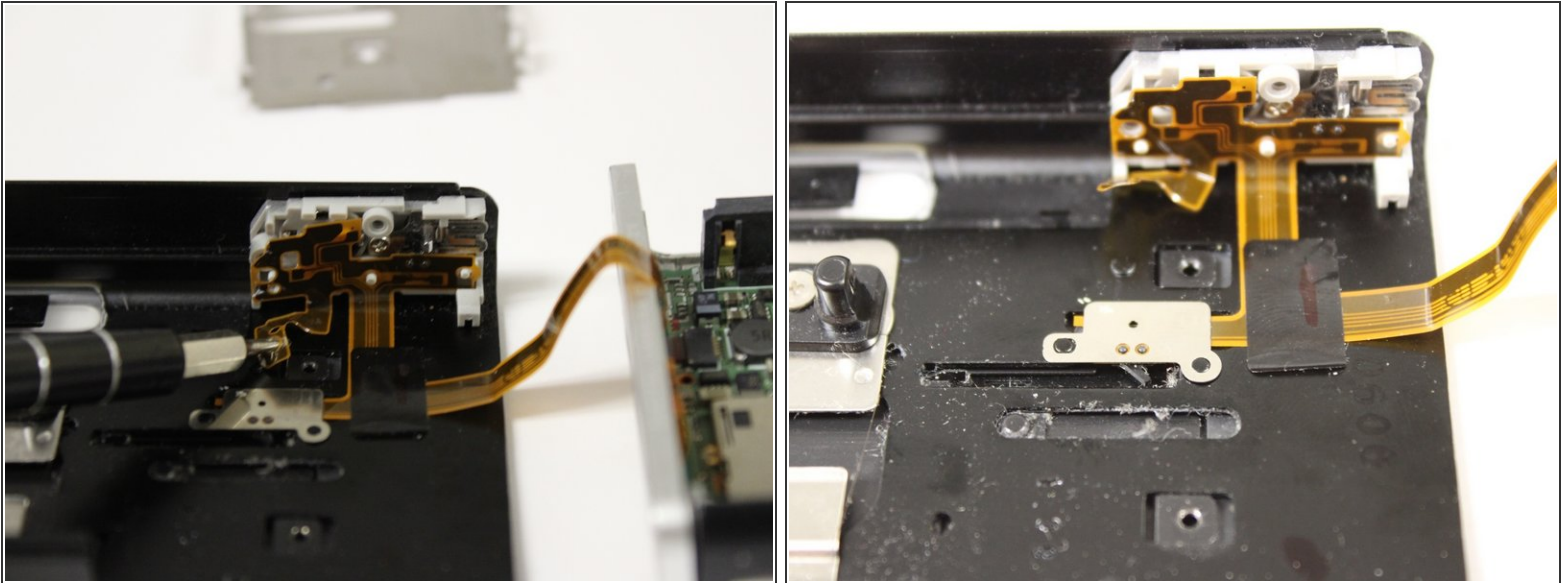
- Gently pull the top and bottom apart.
- Make sure the circular spring on the back of the door is intact by manoeuvring the lens barrier and finding the sticking point.

Step 4



- Find the thin, flat orange cable connector that operates the lens barrier and connects it to the main circuit board.
- Check to make sure the cable is not stuck or broken.

Step 5



- Replace lens cable connector if it is damaged.
- This last step will require you to solder some of the cable connectors. Click [here](#) to learn how to complete this step.

To reassemble your device, follow these instructions in reverse order.