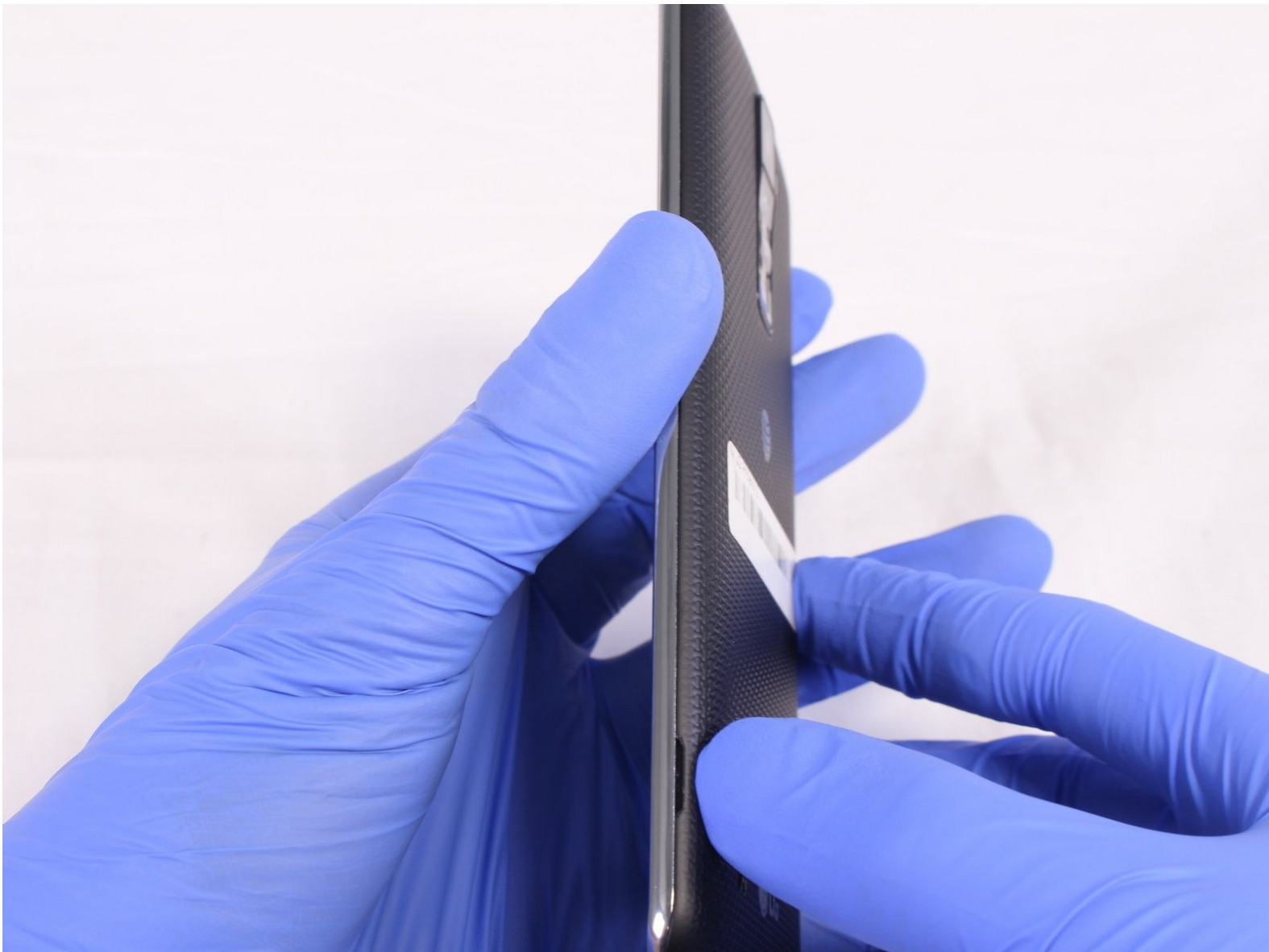




# LG Phoenix 2 Battery Replacement

Use this guide to replace the battery in your LG Phoenix 2.

Written By: Esteban Ruibal

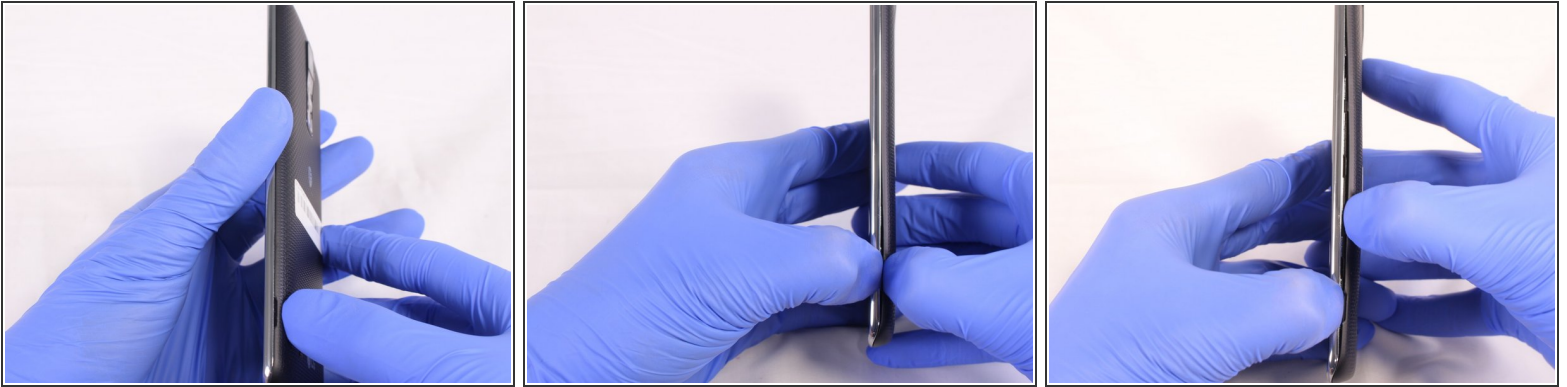


## INTRODUCTION

This guide will walk you through the process of replacing a battery in an LG Phoenix 2. A battery replacement may be needed if the phone loses charge faster than it did when it was new. A battery replacement may also be needed if the phone only works when it is plugged in and does not hold a charge at all.

The battery model used in this phone is a BL-46ZH battery.

## Step 1 — Battery



- Place a fingernail in the notch at the bottom edge of the phone.
- Pull on the back cover with one hand while keeping the rest of the phone steady, and run your fingernail along the edge.

## Step 2



- Place a fingernail in the notch at the bottom edge of the battery.
- Pull the battery out.

To reassemble your device, follow these instructions in reverse order.

This document was last generated on 2019-08-18 05:02:31 AM.