



Samsung Galaxy Luna SIM Card Replacement

This guide is for removing or replacing a Samsung Galaxy Luna's SIM Card.

Written By: Daniel Rocchi



INTRODUCTION

This guide is for removing or replacing a Samsung Galaxy Luna's SIM Card.

TOOLS:

- [iFixit Opening Tools](#) (1)
-

Step 1 — SIM Card



- Using a plastic opening tool, pry the divot to the left of the camera to take off the rear case.

Step 2



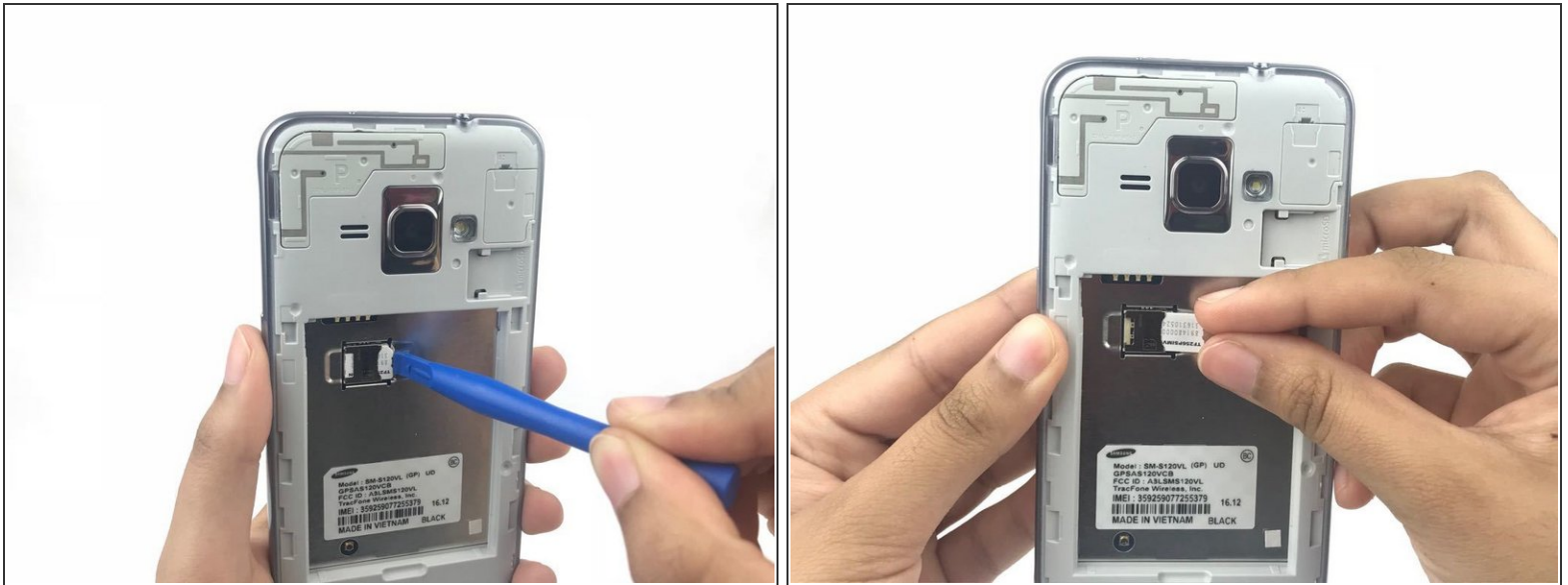
- Pull the corner nearest to the divot to remove the case from the phone.

Step 3



- Place your fingernail or a prying tool at the bottom of the battery and pry it out of the case.

Step 4



- By using your finger or a plastic opening tool, push the SIM card further into its container until a click is heard.
 - Once the click is heard grab the SIM card and slide it out of the container.
 - Remove the SIM card completely.
- During reassembly, slide the new SIM card into the slot until a click is heard.

To reassemble your device, follow these instructions in reverse order.

This document was last generated on 2019-07-12 09:44:03 PM.