



Protocol Kaptur GPS Main Circuit Board Replacement

Guide on how to access and replace the main circuit board of the Protocol Kaptur GPS drone.

Written By: Connor Woitte



 **TOOLS:**

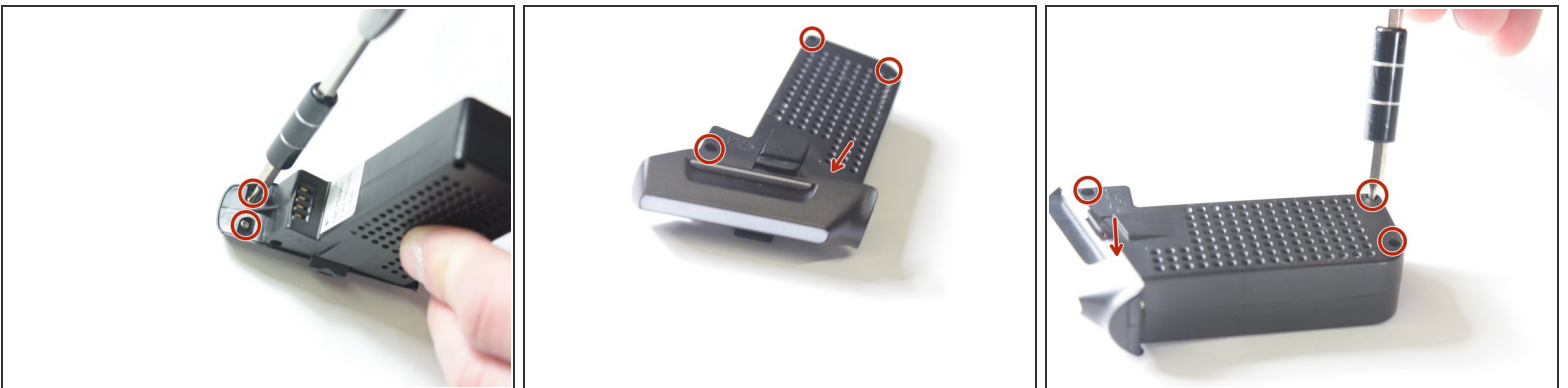
- [iFixit Opening Tools](#) (1)
 - [Soldering Iron](#) (1)
 - [Phillips #000 Screwdriver](#) (1)
-

Step 1 — Battery



- The battery is accessible through the back of the drone.
- Press the tabs on both sides of the white stripe to pull the battery out.

Step 2



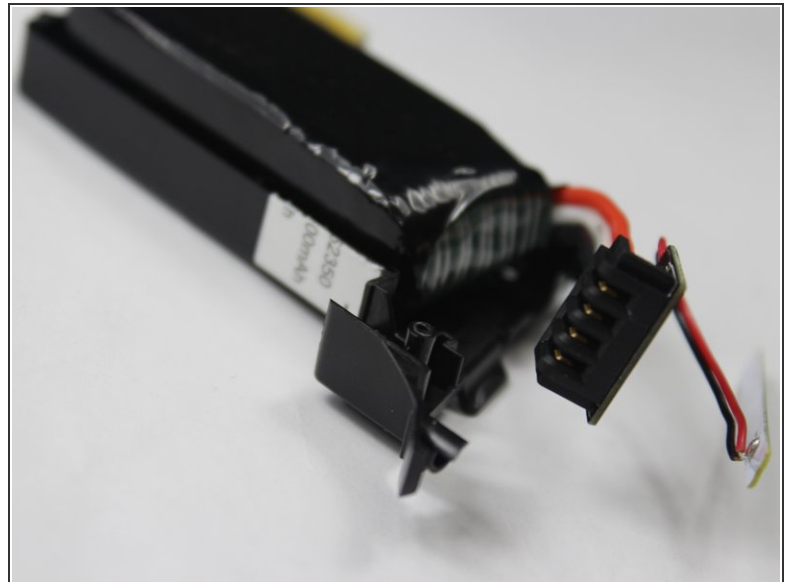
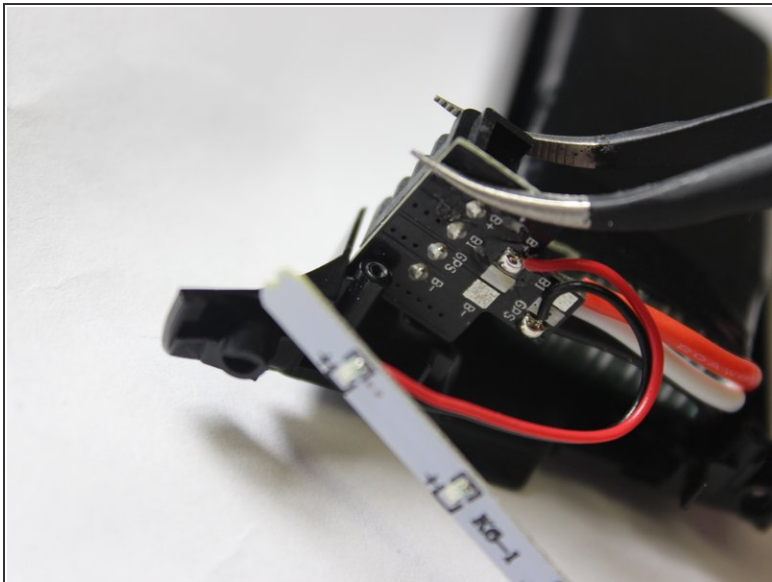
- Now that the battery is out, remove the screws starting with the four smaller ones on the top part of the battery. After this, remove the last four on the side. Make sure to keep track of where each screw came from.
- ⓘ There should be one 7 mm Phillips head screw, three 6 mm Phillips head screws, and four 5 mm Phillips head screws.
- ⓘ There is another screw that is located where the arrow is pointed. You will need to take the other screws out first before you can get to this one.

Step 3



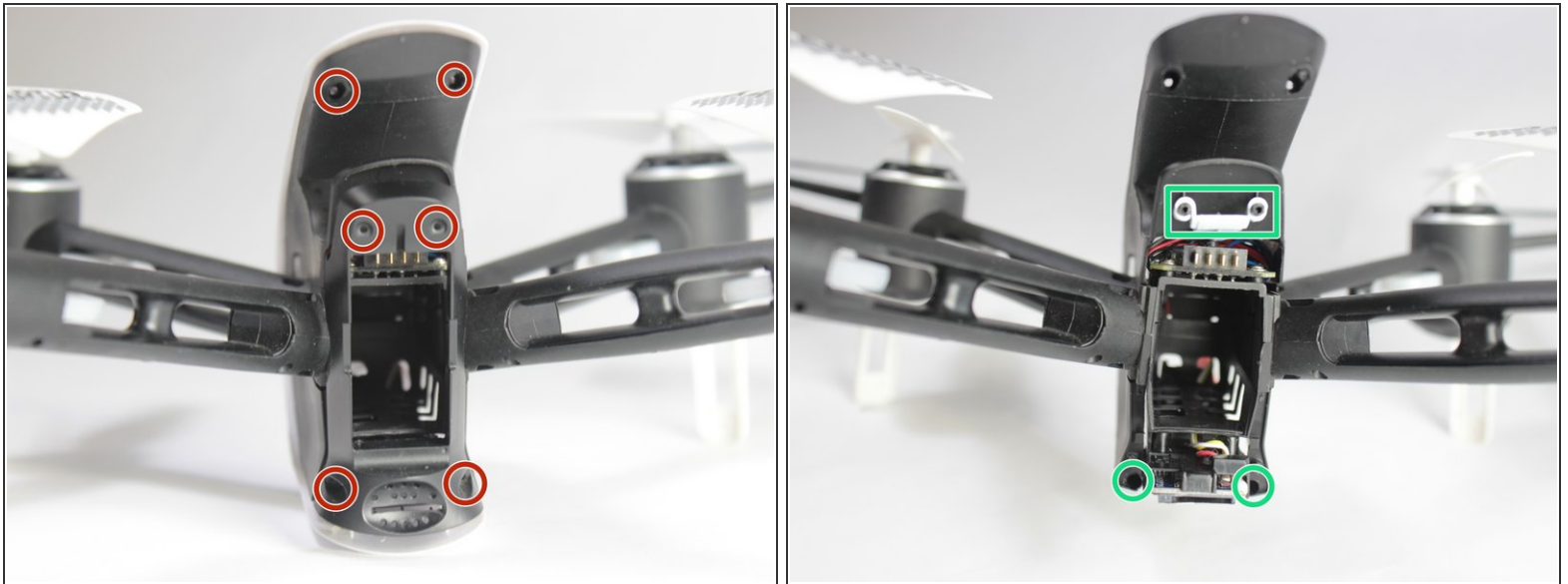
- Remove the top piece, and gently pry the two halves apart. Divide the sticker if necessary.

Step 4



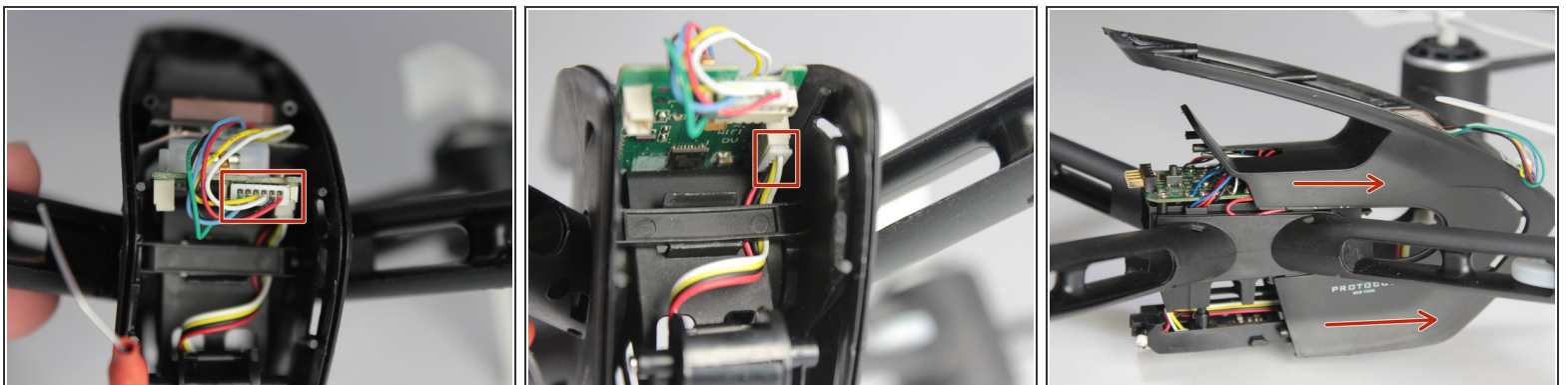
- The battery is now removable from its container.
- ☑ During reassembly, make sure the outlet is returned to its holder and faces the correct direction.

Step 5 — Main Circuit Board



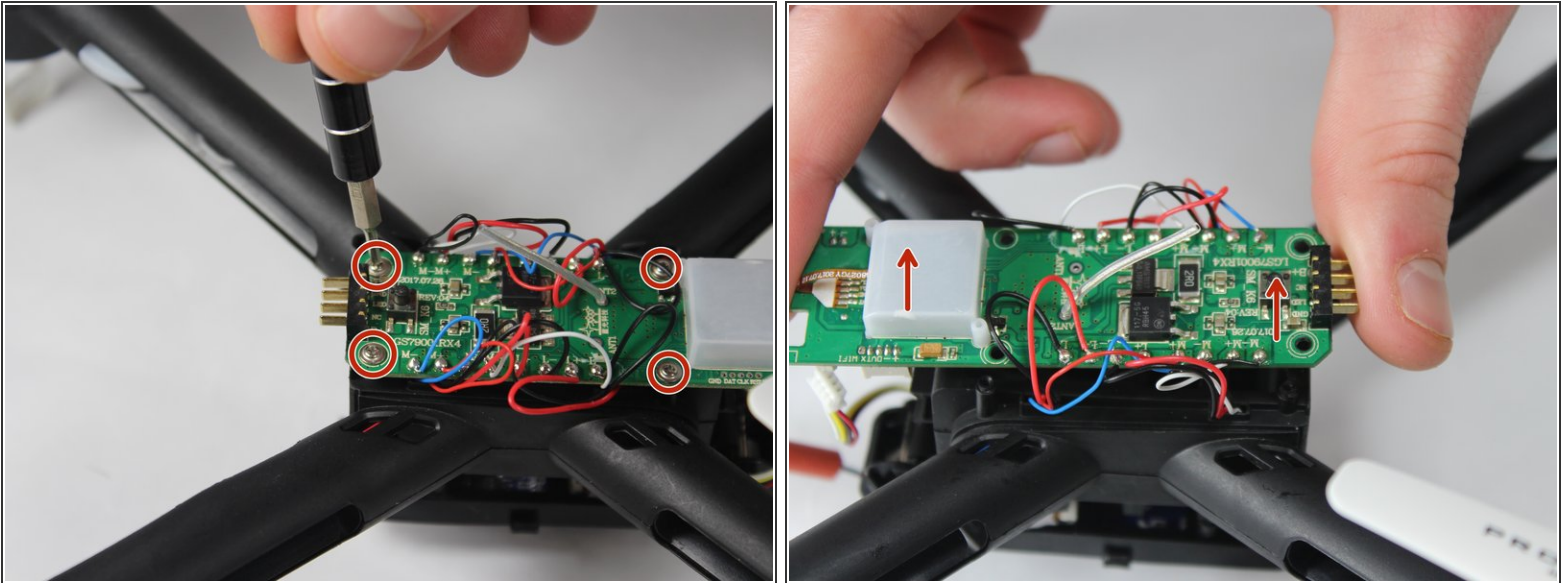
- Remove the 4x 7mm screws on the top and bottom, and the 2x 5mm screws from the middle, then remove the back part of the housing.
- Remove the two hidden screws at the bottom, and the white power button.
- ⓘ There will be 6x 7 mm Phillips head screws, and 2x 5 mm Phillips head screws.

Step 6



- Unplug all the cords from the circuit boards.
- Carefully slide the main body off of the arms.

Step 7



- Remove the four screws, and unsolder all cords on the circuit board.
- ⓘ There will be 4x 4mm Phillips head screws.
- ⓘ It is important to keep track of where the leads came from. Red/Blue and Black/White pairings belong to motors, whereas Black/Red pairings belong to lights. The ports are labeled on the board.

To reassemble your device, follow these instructions in reverse order.

This document was last generated on 2019-07-21 08:32:59 PM.