



Toshiba Satellite C55-B5200 Disk Drive Replacement

A guide on how to replace the disk drive on a Toshiba Satellite C55-B5200 laptop.

Written By: Pablo Andrade



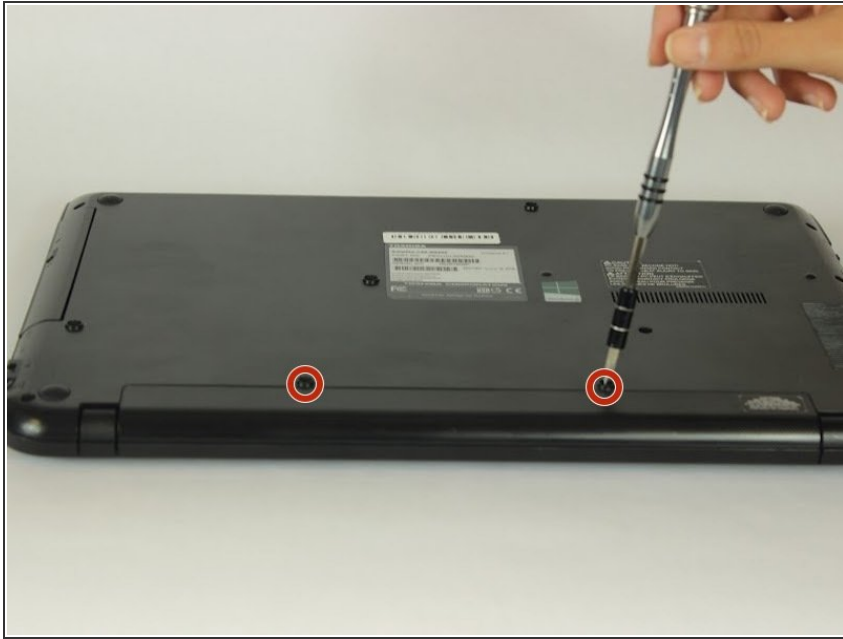
INTRODUCTION

A guide on how to replace the disk drive on a Toshiba Satellite C55-B5200 laptop.

TOOLS:

- [Phillips #0 Screwdriver](#) (1)
 - [iFixit Opening Tools](#) (1)
-

Step 1 — Battery



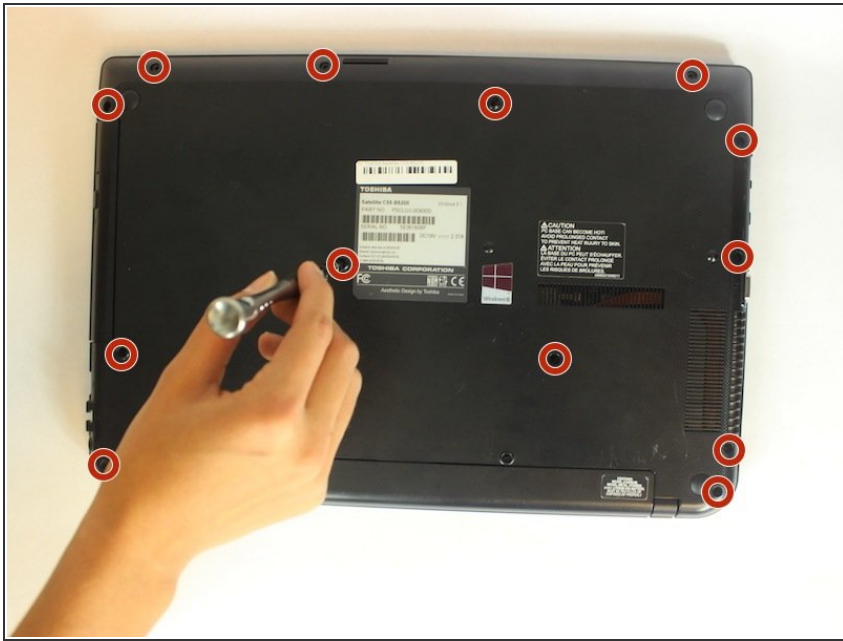
- Turn the laptop off and remove all sources of power.
- Flip the laptop over so that way the bottom is facing towards you.
- Remove the two 6.6mm Phillips #0 screws from the battery.

Step 2



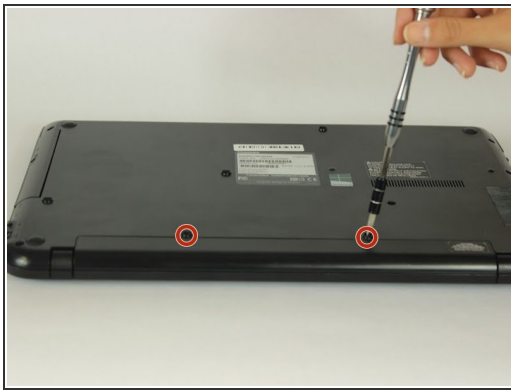
- Pull the battery out of the laptop.

Step 3 — Disk Drive



- Make sure device is turned off and unplugged
- ⚠ Failure to do so could result in electric shock
- Use J0 Philips Head Screwdrivers to remove 13, 6.6 mm screws on back of device

Step 4



- Remove the remaining two, 6.6 mm screws to remove the battery
- Use a plastic opening tool to lift and open the back

Step 5



- Lift and pull out disk drive

To reassemble your device, follow these instructions in reverse order.

This document was last generated on 2019-07-21 06:55:13 AM.