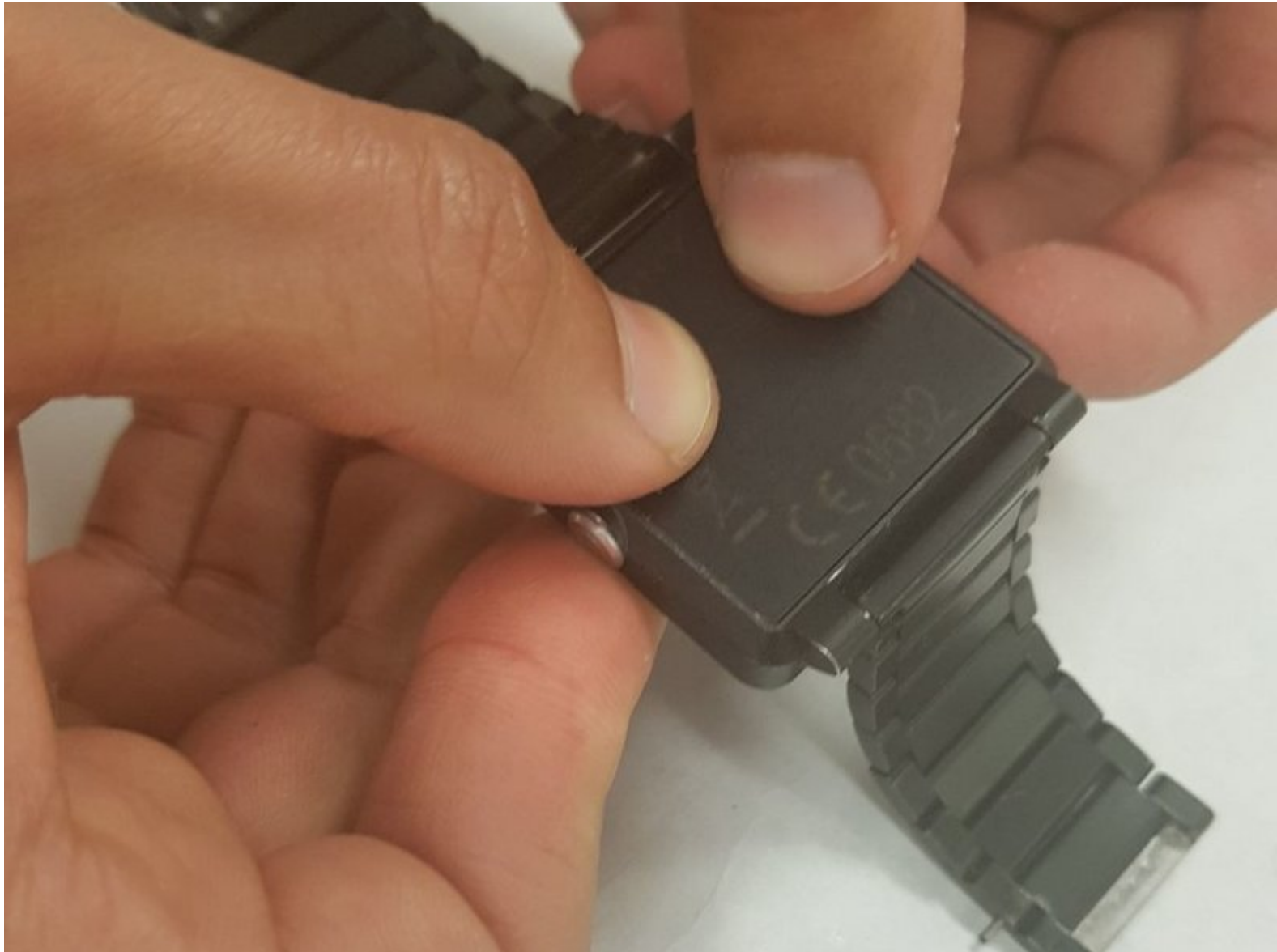




# Sony Smart Watch SW2 Motherboard Cover Replacement

We will be showing you how to detach the motherboard cover and replace it.

Written By: Mohammed Alshamrani



---

## INTRODUCTION

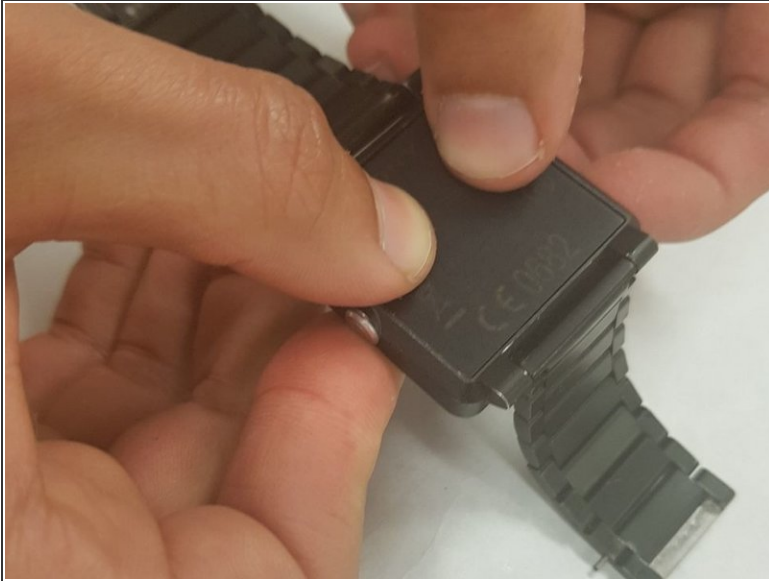
This guide will illustrate on how to remove and replace the motherboard cover.

---

### TOOLS:

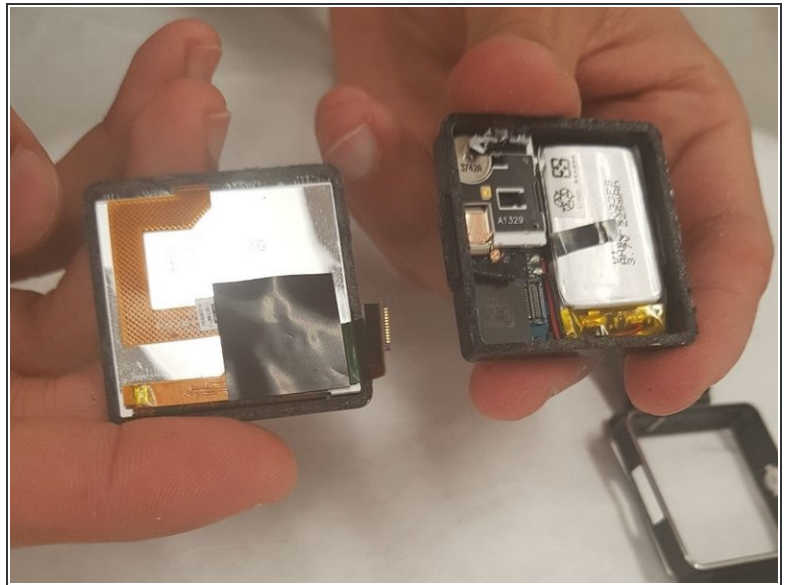
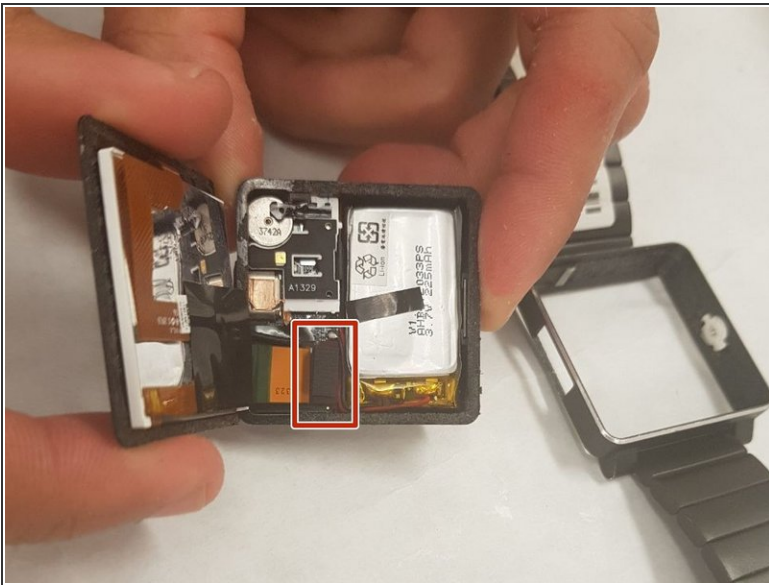
- [iFixit Opening Tools](#) (1)
-

## Step 1 — Motherboard Cover



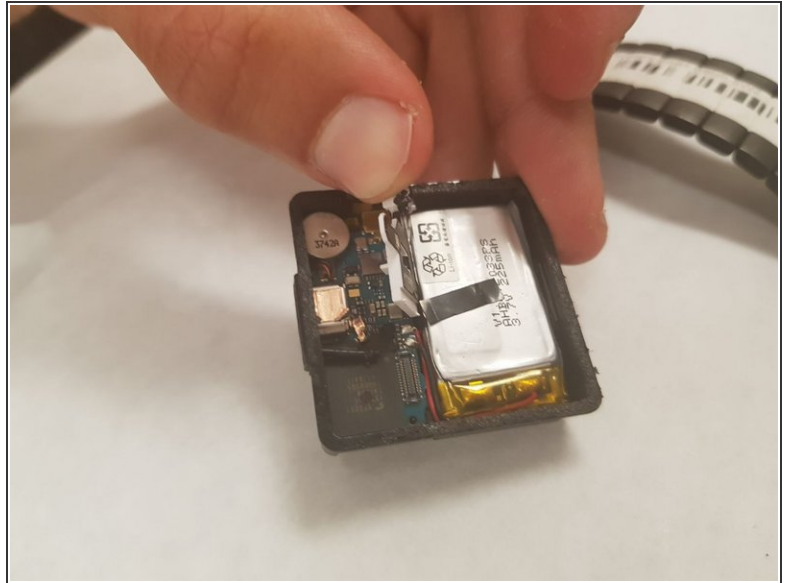
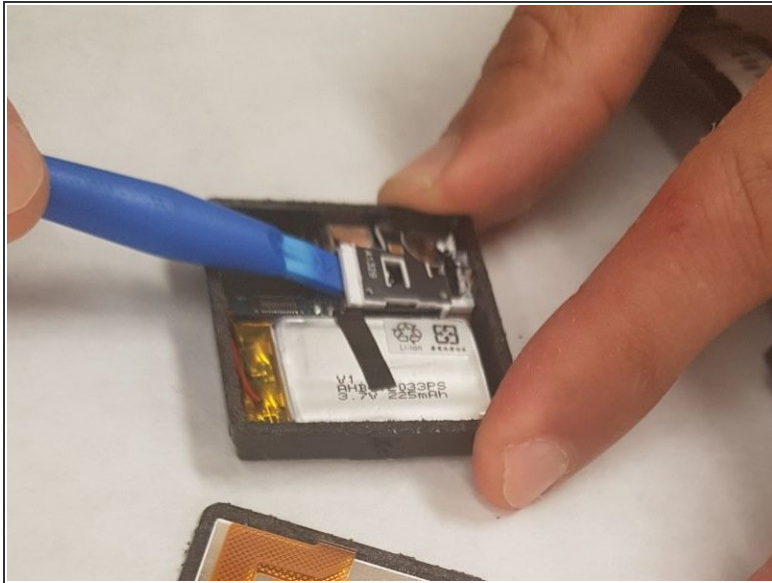
- Push down the smart watch housing with both thumbs while holding the outer frame.
- ⓘ Note that the power button will fall off of the frame. Set it aside in a safe place with the wristband.

## Step 2



- Detach the screen using the plastic prying tool.
- Detach the LCD screen from the motherboard by pulling the ribbon cable very carefully and slowly.

### Step 3



- Using a the Spudger, remove the cover. Work your way around to find the most convenient place to open it.

To reassemble your device, follow these instructions in reverse order.