



Lenovo Yoga 11e Chromebook Battery Replacement

This guide will help other accomplish replacing a battery on a Lenovo Chromebook

Written By: Corey Meyer



**TOOLS:**

- [Phillips #0 Screwdriver \(1\)](#)

**PARTS:**

- [Pro Tech Toolkit \(1\)](#)

Step 1 — Removing the back panel



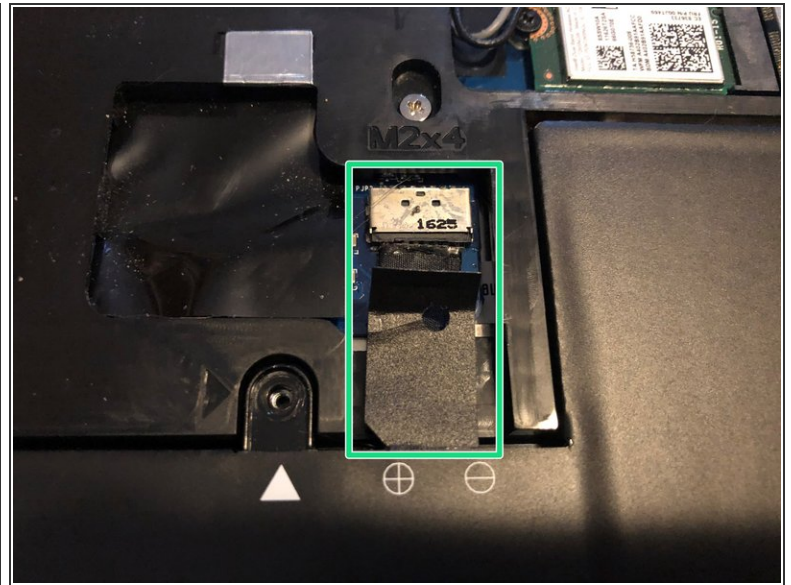
- There will be 7 Philips head screws on the bottom which will need to be removed to gain access to the battery
- ⓘ NOTE: You may void your warranty completing this replacement

Step 2 — Removing the battery screws



- There will be 2 other Philips screws under the cover there should also be two arrows pointing at each screw that needs to be removed.

Step 3 — Removing the battery



- Pull up the battery slightly by the tab and pull back
- Remove the connector from the motherboard and pull the battery up and away from the board
- ☞ Make sure not to pull all the way back as the battery is still connected to the motherboard
- ⓘ The computer may not boot when you try to turn it on, plug it into its power supply and it should boot.

Congratulations! You hopefully have successfully completed this guide! To reassemble your device follow the steps backwards.