



Sony Cyber-Shot DSC-W50 Battery Replacement Replacement

Use this guide to replace the battery in your Sony Cyber-shot DSC-W50

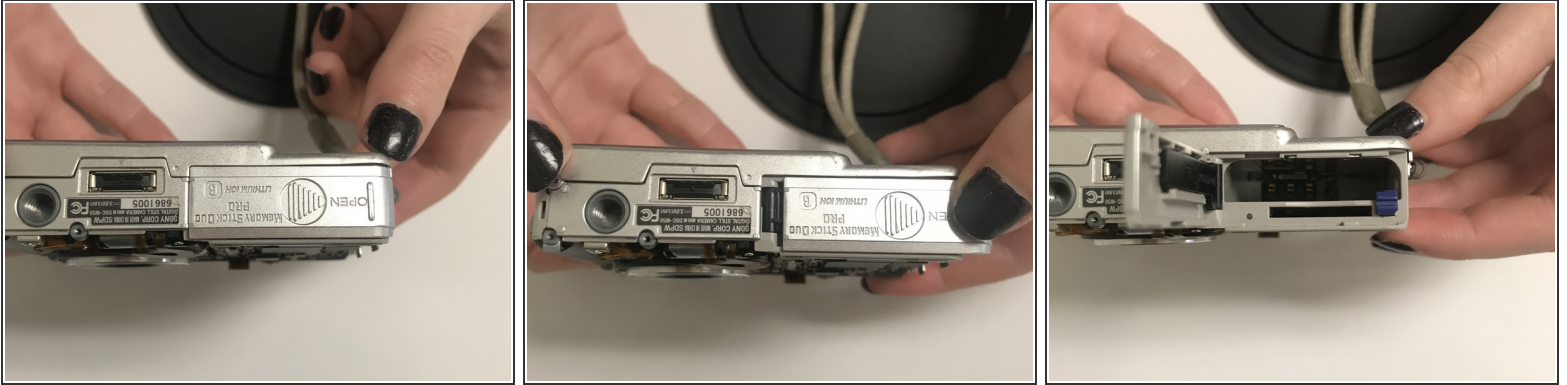
Written By: travis fraser



INTRODUCTION

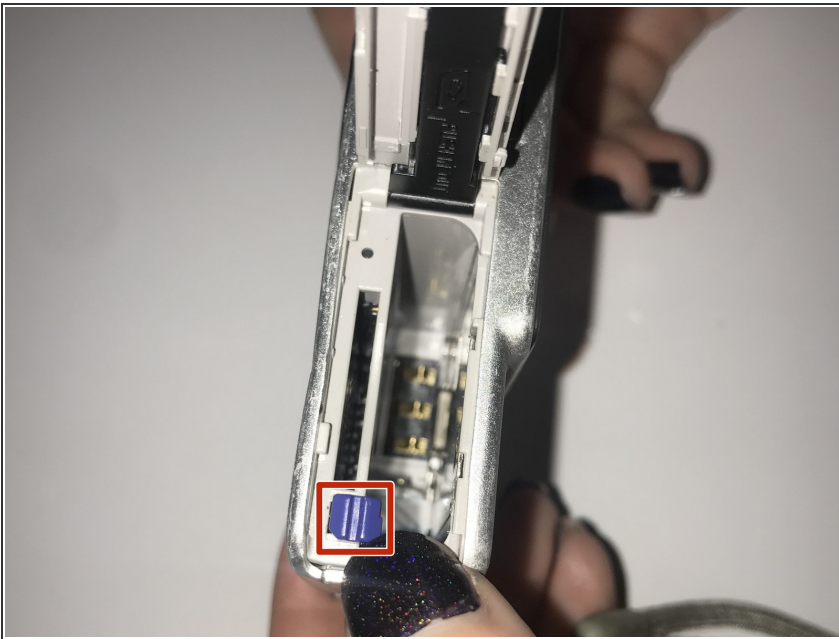
This guide will walk you through the process of changing a dead or bad battery in your Sony Cyber-shot DSC-W50.

Step 1 — Battery



- Slide the cover door in the direction of the arrow with your finger
- Flip the cover door up to expose the battery compartment

Step 2



- Push the blue slide back for the old battery to pop up
- Remove the old battery

To reassemble your device, follow these instructions in reverse order.

This document was last generated on 2018-05-29 01:32:37 AM.