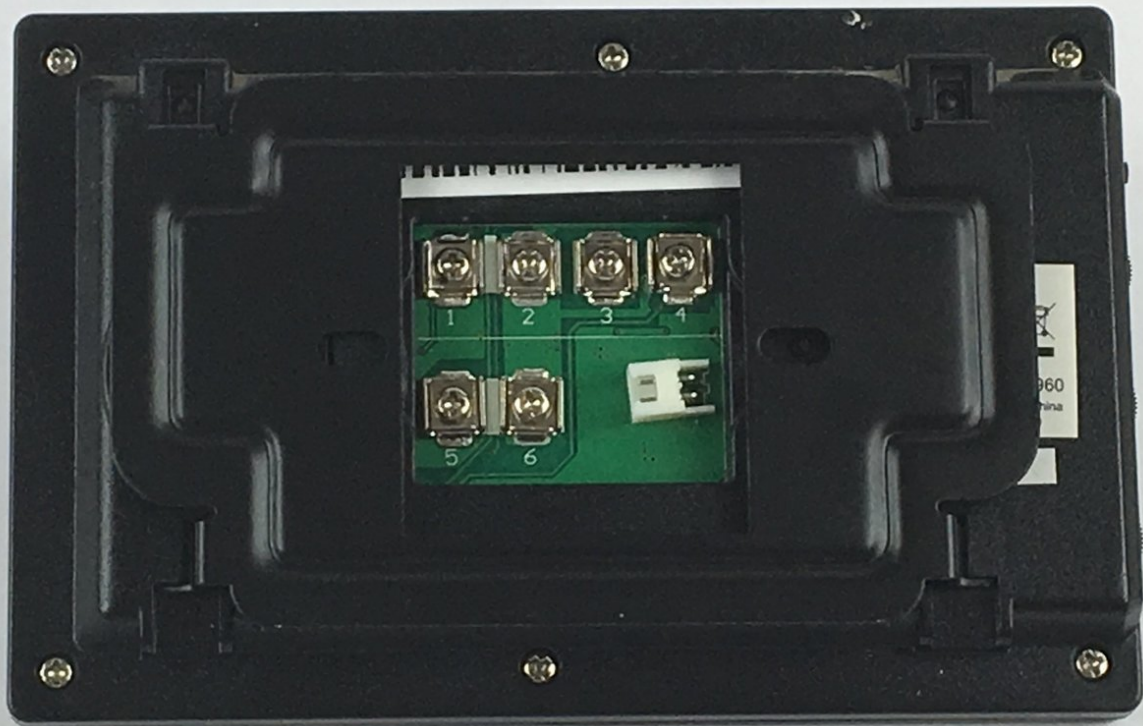




Swann Doorphone Video Intercom Wall Mount Replacement

Replace your wall mount to mount the Swann Doorphone Video Intercom to your wall.

Written By: Emily Stenke



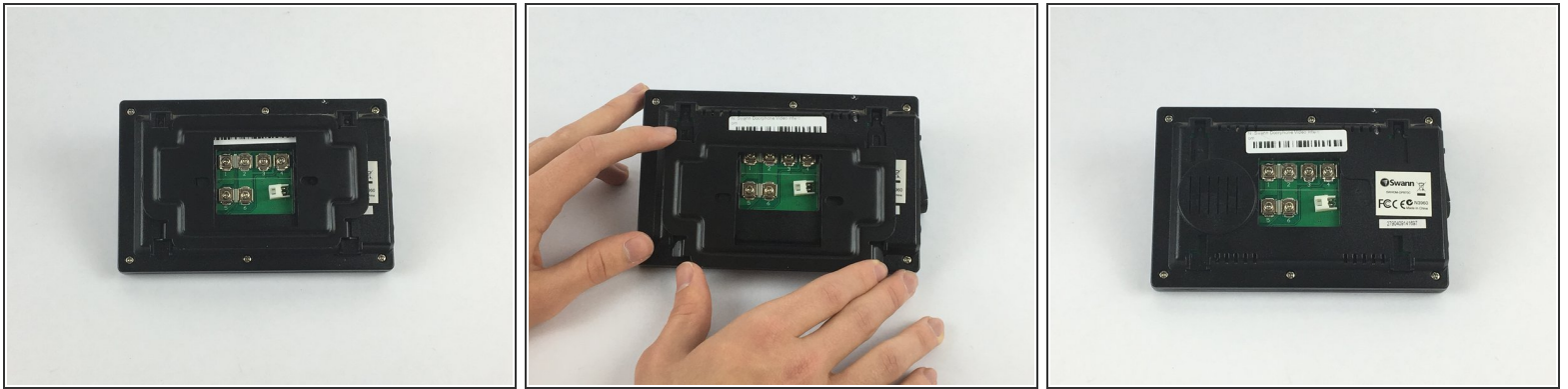
INTRODUCTION

This guide will help you replace the wall mount of the Swann Doorphone Video Intercom. The wall mount is what is connected to your inside and outside walls.

TOOLS:

- [JIS #0 Screwdriver](#) (1)
-

Step 1 — Wall Mount



- Flip the monitor of the Swann Doorphone over so that the underside is facing up.
- Grip the sides of the rectangular frame where they extend outwards and slide it down.
- After sliding down, pull the frame towards you to remove it from the monitor.

Step 2



- Flip the outdoor camera over so that the underside is facing up.
- Remove the back cover by grabbing the sides of the camera and pulling towards your body.

To reassemble your device, follow these instructions in reverse order.

This document was last generated on 2019-07-22 03:37:26 AM.