



# Ring Video Doorbell Camera Replacement

A replacement guide for the Ring Video Doorbell Camera

Written By: Isaiah Wilson



---

## INTRODUCTION

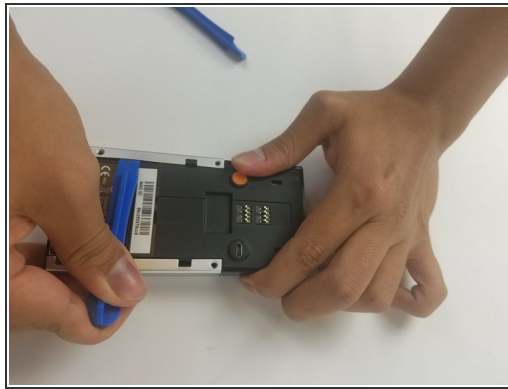
In this guide, you will be shown how to take apart and replace the camera of the Ring Video Doorbell step-by-step. You will need a Phillips screwdriver size PH00 and a Plastic Tool Opener.

---

### TOOLS:

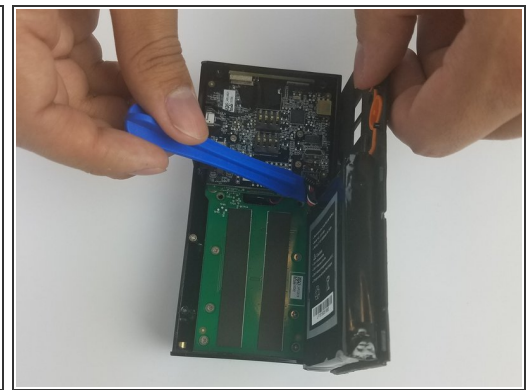
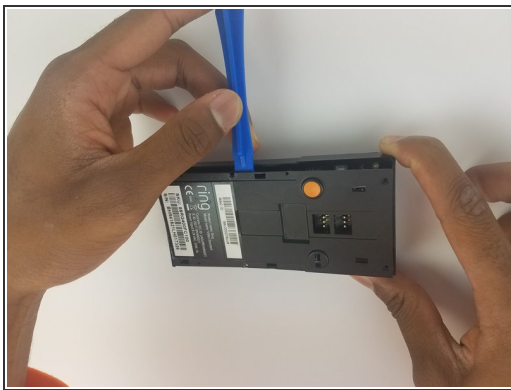
- [Phillips #00 Screwdriver](#) (1)
  - [iFixit Opening Tools](#) (1)
-

## Step 1 — Camera



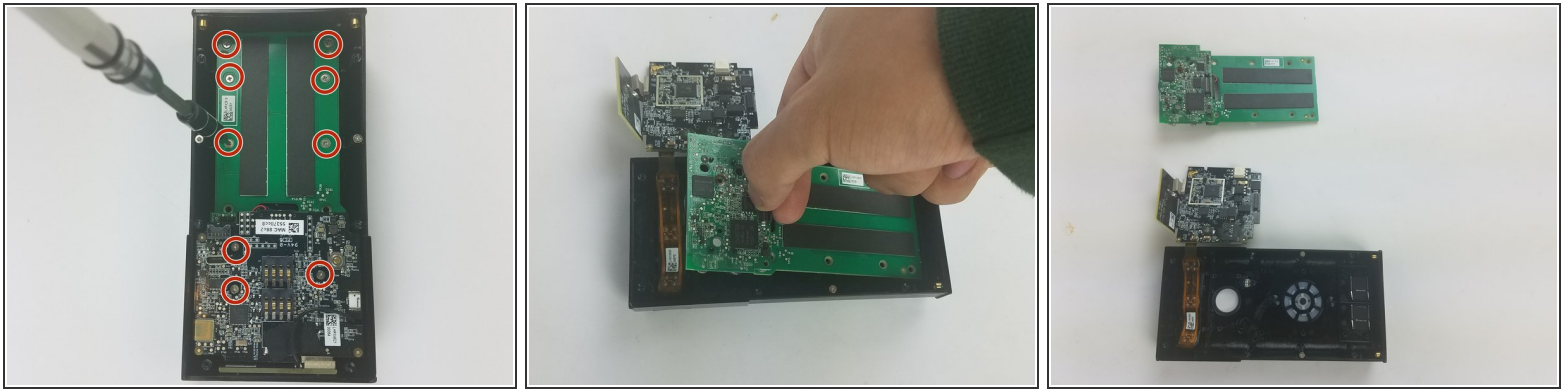
- Start by using the PH00 Phillips Screwdriver to take out the 6 1 mm screw's on the bottom of the device.
- Pry open the aluminum plate using the Plastic Opening Tool(s).
- Remove the 2 1. mm screws using the PH00 Phillips Screwdriver.

## Step 2



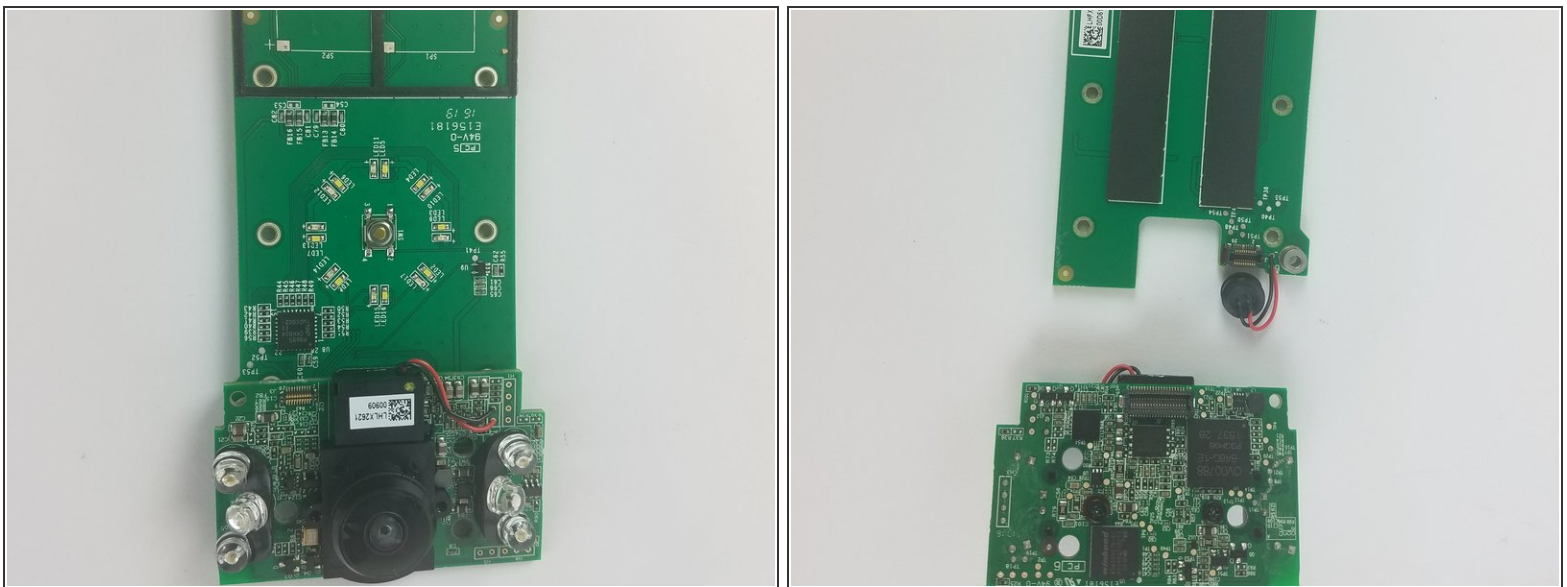
- Pry open the back case as shown using the Plastic Opening Tool.
- Disconnect the battery from motherboard by carefully pulling up on the connector.

### Step 3



- Unscrew the 9 1 mm screws using a PH00 Phillips Screwdriver.
- Carefully detach the motherboard, from the housing unit using your hands.

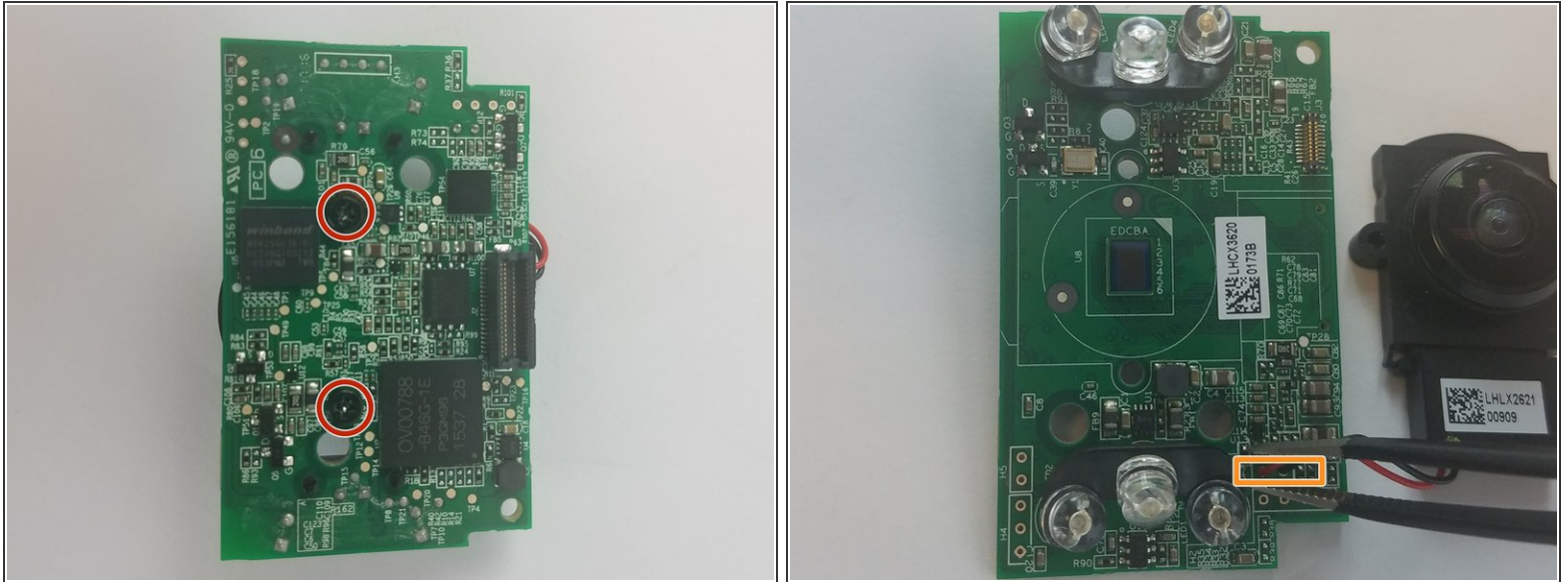
### Step 4



- Using the Plating Tool Opener, carefully disconnect the ribbon cable that attaches the camera to the housing.
- Replace camera, and follow the steps in reverse order to reassemble



## Step 5



- Unscrew the two 1 mm screws using the PH00 Philips Screwdriver.
- Detach the black and red wire connected to the motherboard, using the tweezers, to remove the camera.

To reassemble your device, follow these instructions in reverse order.