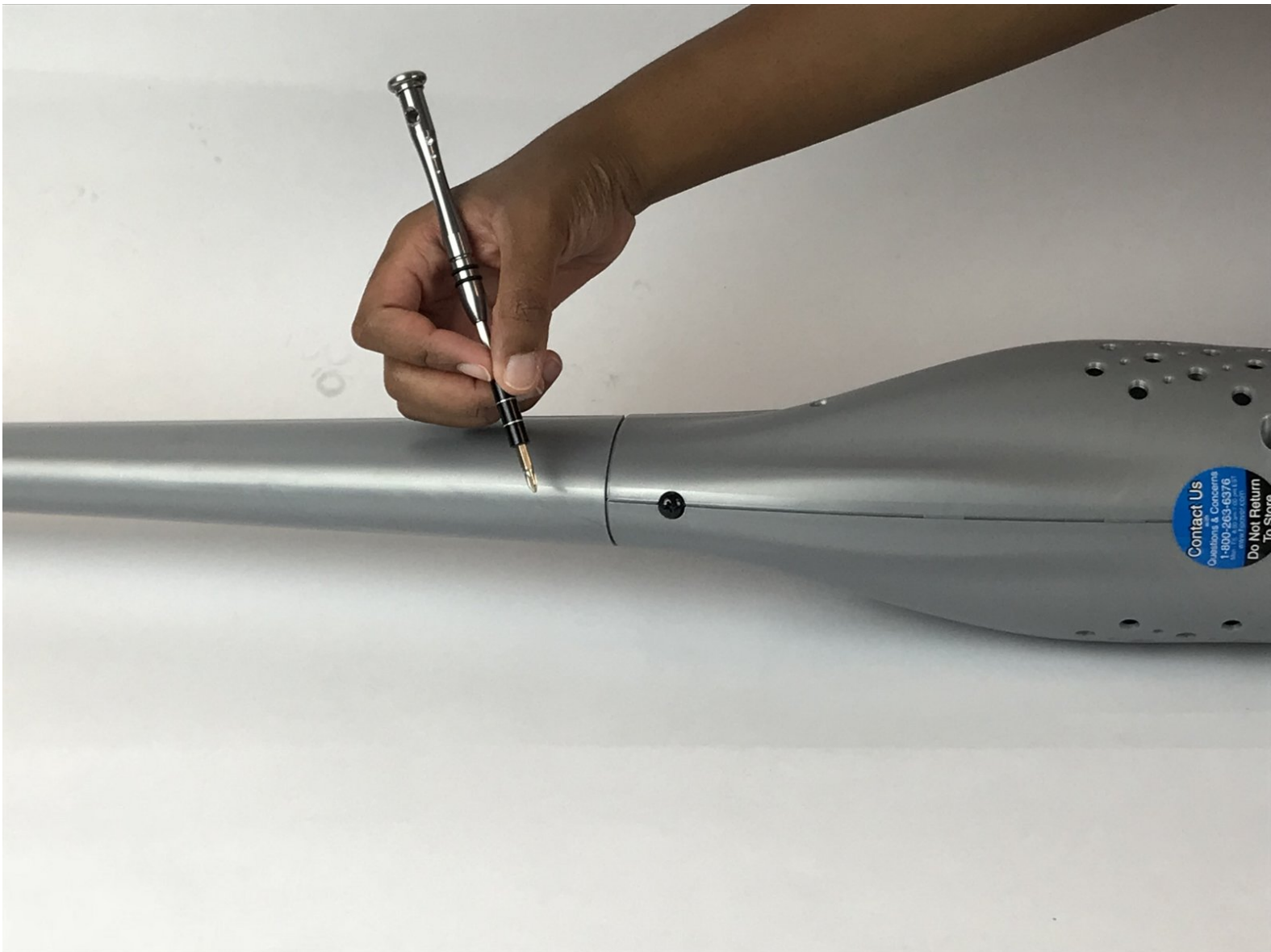




# Hoover LiNX Handle Teardown

This guide will show you how to teardown the handle of the Hoover LiNX

Written By: Mark Nelson



---

## INTRODUCTION

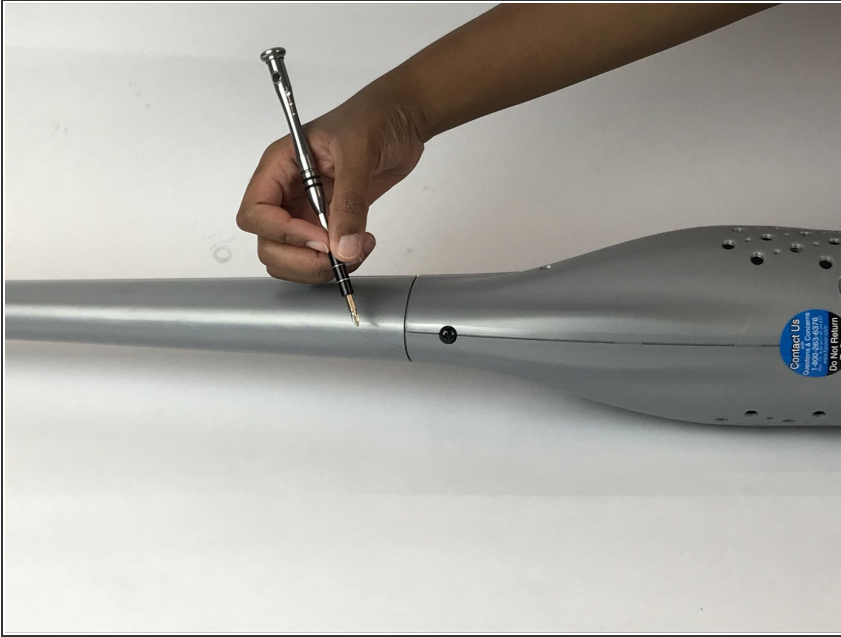
This guide will show you how to teardown the handle to access the power button and motherboard.

---

### TOOLS:

- [Phillips #1 Screwdriver](#) (1)
  - [iFixit Opening Tools](#) (1)
-

## Step 1 — Hoover LiNX Handle Teardown



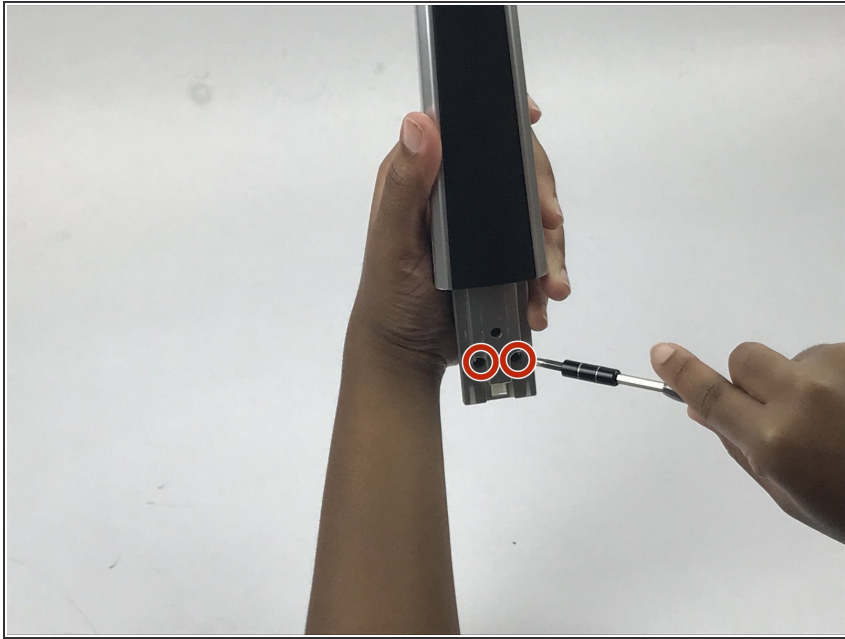
- Remove the single 15mm Phillips #1 screw from the handle.

## Step 2



- Remove the handle by pulling it up.

### Step 3



- Remove two 15mm Phillips #1 screws from the handle.

### Step 4



- Use a plastic opening tool to carefully pry the black cover off of the handle.

## Step 5



- Remove five 15mm Phillips #1 black screws from the handle.

## Step 6



- Remove the silver plastic cover using the plastic opening tool.