



Protocol Kaptur GPS Virtual Reality Lens Replacement

Virtual Reality Lens

Written By: Austin Fedie



INTRODUCTION

This guide will help you replace your lens if they get scratched or broken.

TOOLS:

- [iFixit Opening Tools](#) (1)
 - [Phillips #00 Screwdriver](#) (1)
 - [Phillips #1 Screwdriver](#) (1)
 - [Tweezers](#) (1)
-

Step 1 — Virtual Reality Lens



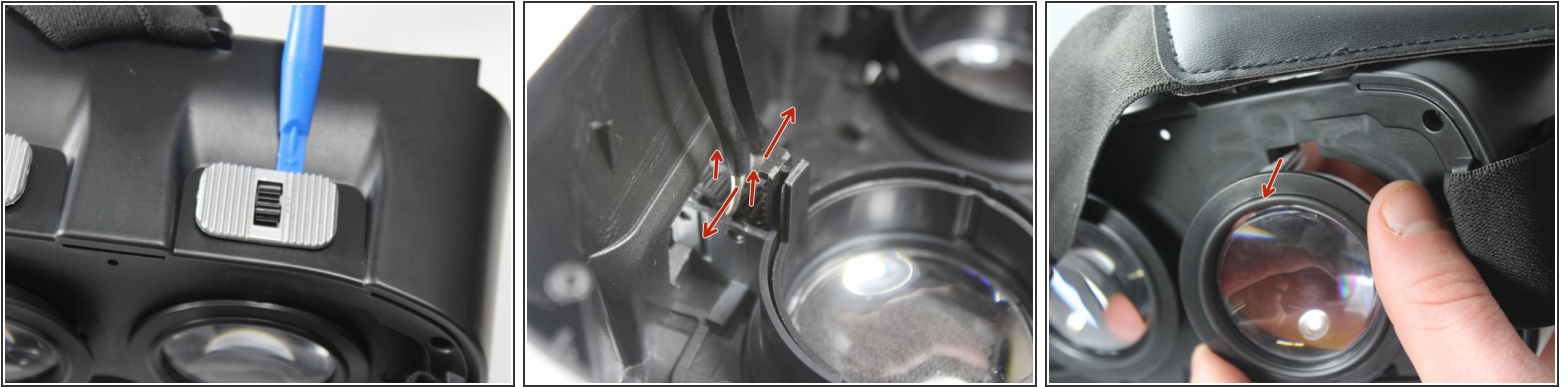
- Remove the phone slide from the virtual reality lens.
- Take the outside cover off using a plastic opening tool.

Step 2



- Remove each screw from its place.
 - Four screws will be 6mm Phillips head.
 - Twelve screws will be 7mm Phillips head.
- Pull each bracket out so you can see the full lens case.

Step 3



- You will need to remove the adjustable lens lever on top of the virtual reality lens.
- Using a tweezers, you will need to separate the tooth gears and remove them so the lens can fall freely out.
- Pull the lens case out from the front of the headset.

Step 4



- To get the actual lens out, you will need to push the lens from the outside in with a little force to break the lens out of it's case.

To reassemble your device, follow these instructions in reverse order.

This document was last generated on 2019-07-17 10:19:17 PM.