



# Dell Alienware M17x R2 Display Assembly Replacement

Written By: Teren Wallace



## INTRODUCTION

In this guide, we will show you how to remove and replace the Display Assembly.

---

### TOOLS:

- [Phillips #0 Screwdriver](#) (1)
-

## Step 1 — Remove the Screws

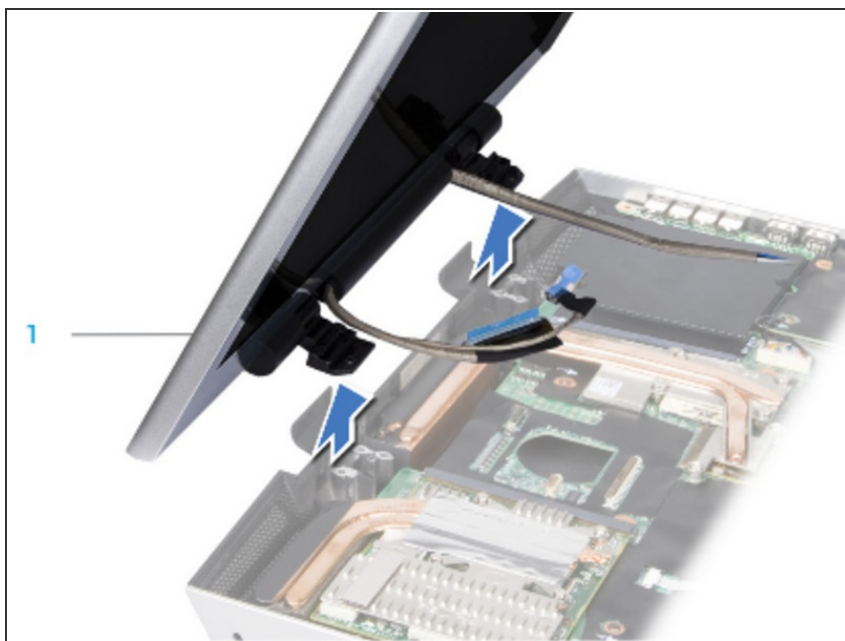


**⚠ WARNING:** Before working inside your computer, read the safety information that shipped with your computer.

**⚠ CAUTION:** To avoid damage to the display, you must not disassemble your Edge-to-Edge display assembly.

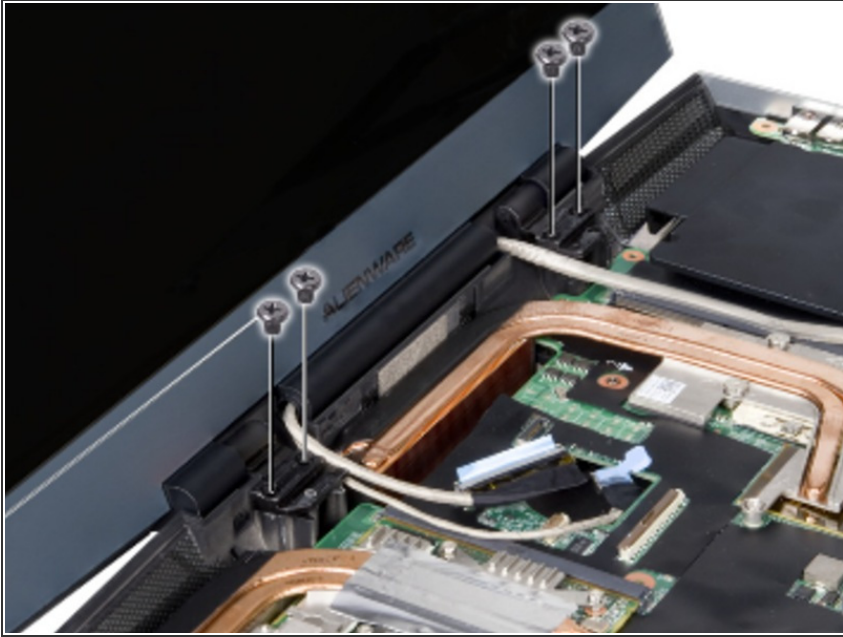
- Remove the four screws (two from each hinge) that secure the display assembly to the computer base.

## Step 2 — Lifting the Display Assembly



- Bend the display assembly towards the computer base at a 45-degree angle and lift the display assembly off the computer.

### Step 3 — Align the Screw Holes



- Align the screw holes on the display hinges with the computer base.

### Step 4 — Replace the Screws



- Replace the four screws (two on each hinge) that secure the display assembly to the computer base.

To reassemble your device, follow these instructions in reverse order.