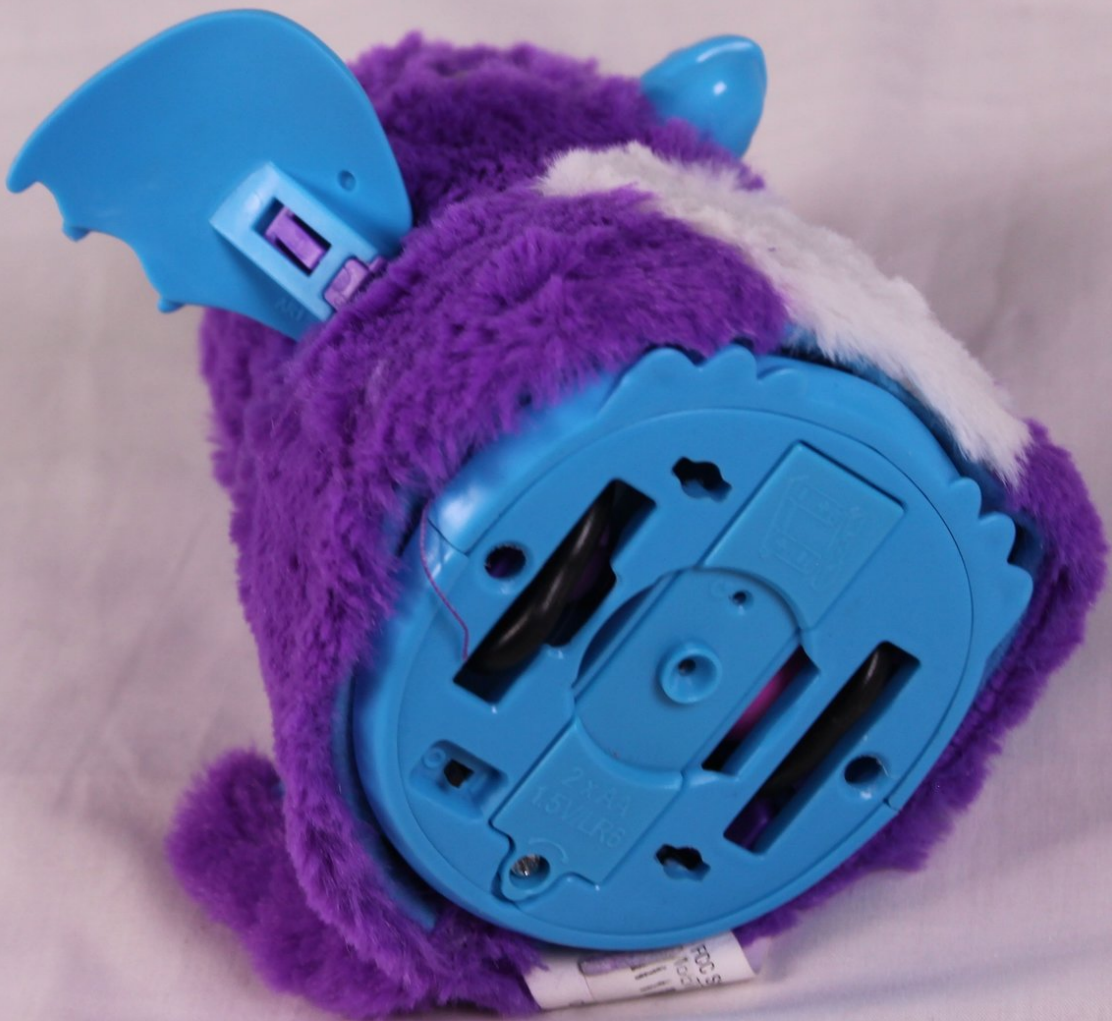




Spin Master Hatchimal Draggles Plastic Wing Replacement

This guide will explain how to remove the clipped wing on the Hatchimal Draggles.

Written By: Kimberly Searles



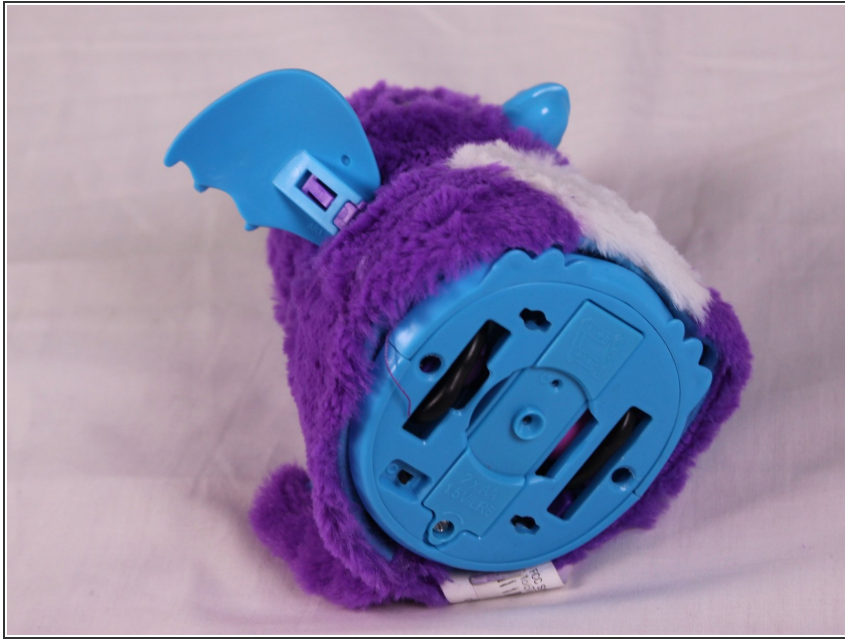
INTRODUCTION

The clip on the plastic wing can break from rough play time. This guide shows you how to remove the wings.

TOOLS:

- [iFixit Opening Tools](#) (1)
-

Step 1 — Plastic Wing Replacement



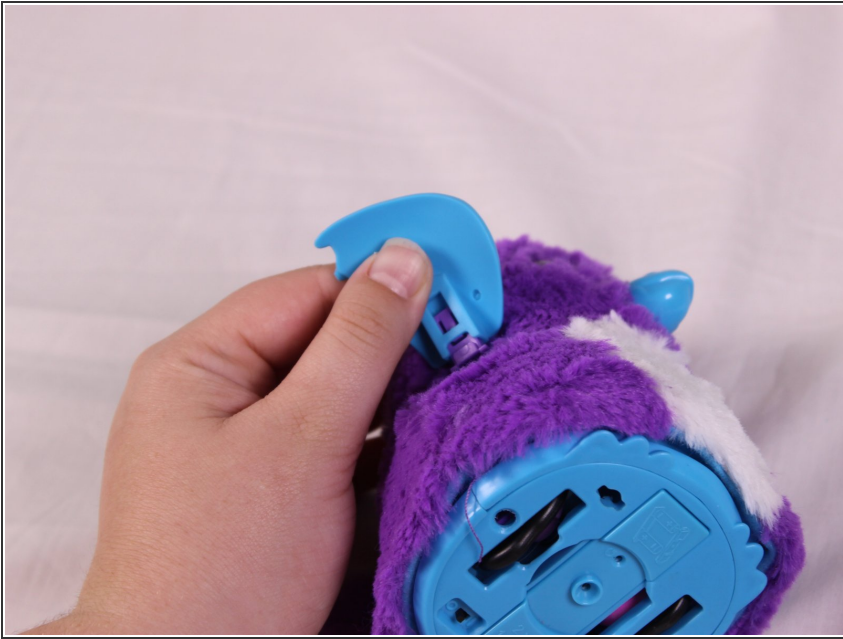
- lay the Hatchimal on its side.

Step 2



- Using the plastic opening tool, push in on the purple clip.

Step 3



- Pull the wing off of the hatchimal.
- ⓘ The wing should come off with little resistance.

To reattach a wing, slide the new wing on until it clips in place.

This document was last generated on 2019-07-18 01:52:02 PM.