



Samsung Galaxy S7 Edge Rear Glass Replacement

Rear glass panel replacement for the Samsung Galaxy S7 Edge.

Written By: Arthur Shi



INTRODUCTION

Follow this guide to replace the glass back for your Samsung Galaxy S7 Edge.

TOOLS:

- [iOpener](#) (1)
- [Suction Handle](#) (1)
- [iFixit Opening Picks set of 6](#) (1)
- [Tweezers](#) (1)

PARTS:

- [Galaxy S7 Edge Rear Panel/Cover](#) (1)
- [Galaxy S7 Edge Rear Glass Panel/Cover - Original](#) (1)
- [Galaxy S7 Edge Rear Cover Adhesive](#) (1)

Step 1 — Rear Glass



- i** Opening your phone will compromise its waterproof seals. Have replacement adhesive ready before you proceed, or take care to avoid liquid exposure if you reassemble your phone without replacing the adhesive.
- [Heat an iOpener](#) and apply it to a long edge of the phone for about two minutes.
- i** You may need to reheat and reapply the iOpener several times to get the phone warm enough. Follow the iOpener instructions to avoid overheating.
- !** A hair dryer, heat gun, or hot plate may also be used, but be careful not to overheat the phone—the OLED display and internal battery are both susceptible to heat damage.

Step 2



- Once the back panel is warm to the touch, apply a suction cup as close to the heated edge of the phone as you can while avoiding the curved edge.
 - ⓘ The suction cup will not adhere well on the curved portion of the glass.
 - ⓘ If the phone's back cover is cracked, the suction cup may not stick. [Try lifting it with strong tape](#), or superglue the suction cup in place and allow it to cure so you can proceed.
- Lift on the suction cup and insert an opening pick under the rear glass.
 - ⓘ Due to the curved glass, you will be pushing up, rather than inserting parallel to the plane of the phone.
 - ⓘ If you have trouble, apply more heat to further soften the adhesive, and try again. The adhesive cools very fast, so you may need to heat it repeatedly.

Step 3



- Once you have the pick firmly inserted into the glass, reheat and reapply the iOpener to soften the adhesive.

Step 4



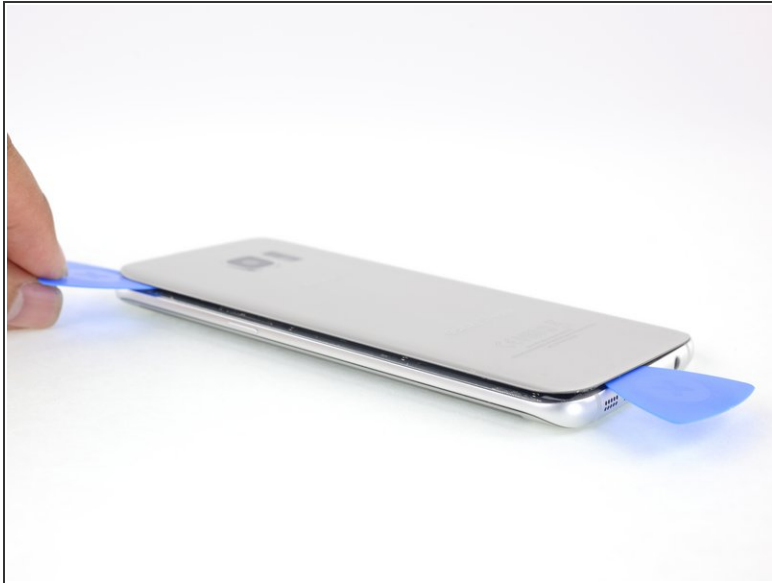
- Slide the opening pick up along the side of the phone, separating the adhesive.
- ⓘ Go slowly so that the tip doesn't slip out of the seam. If sliding becomes difficult, reheat and reapply the iOpener.
- Leave the pick in place and grab a second pick as you proceed to the next step. Leaving the pick inserted can help prevent the glue you just separated from re-adhering.

Step 5



- Repeat the previous heating and cutting procedure for the remaining three sides of the phone.
- Leave an opening pick on each side as you continue to the next to prevent the adhesive from resealing.

Step 6



- Lift the glass and remove it from the phone.

Step 7



✦ To install a new back cover:

- Use tweezers to peel away any remaining adhesive from the phone's chassis. Then clean the adhesion areas with high concentration isopropyl alcohol (at least 90%) and a lint-free cloth to prep the surface for the new adhesive.
- Peel the adhesive backing off of the new rear glass, carefully line up one edge of the glass against the phone chassis, and firmly press the glass onto the phone.

✦ If you're reinstalling the old back cover, or using a back cover without adhesive pre-installed, [follow this guide](#).

- ⓘ Be sure to turn on your phone and test your repair before installing new adhesive and resealing the phone.
- ⓘ If desired, you may reinstall the back cover without replacing the adhesive. Remove any large chunks of adhesive that might prevent the back cover from sitting down flush. After installation, heat the back cover and apply pressure to secure it. It won't be waterproof, but the glue is usually more than strong enough to hold.

Compare your new replacement part to the original part. You may need to transfer remaining components (such as the camera lens) or remove adhesive backings from the new part before installing.

To reassemble your device, follow these instructions in reverse order.