



# LG 305C Internal Casing Replacement

This guide will replace the internal casing within the LG 305C phone.

Written By: Ashley Kidwell



---

## INTRODUCTION

Before completing this replacement guide, it is important to unplug the device. This replacement guide will show how to replace the internal casing in the device.

---

### TOOLS:

- [iFixit Opening Tools](#) (1)
  - [JIS #000 Screwdriver](#) (1)
-

## Step 1 — Battery



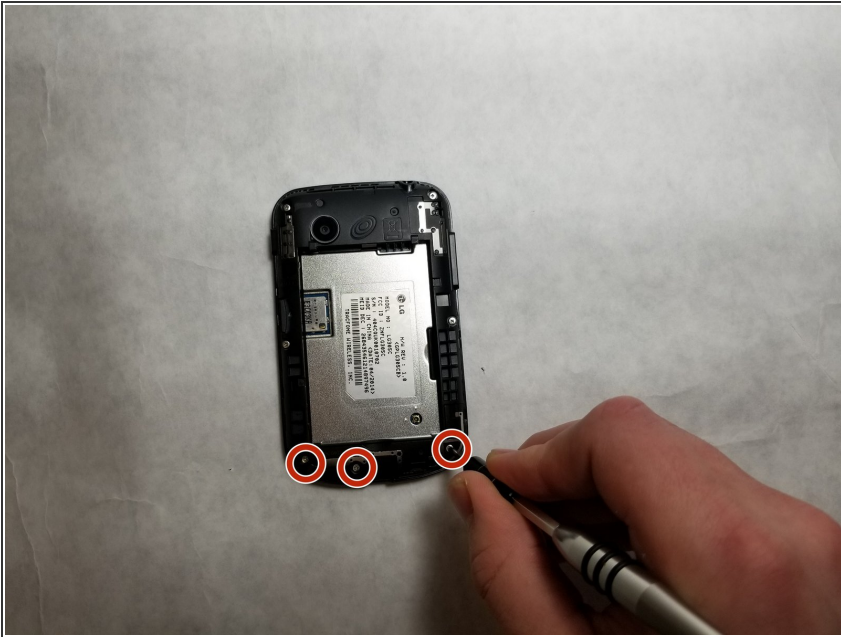
- Pry open the back case on the device with a plastic opening tool and remove it.

## Step 2



- Pry the battery out of the device with a plastic opening tool and remove it.

### Step 3 — Internal Casing



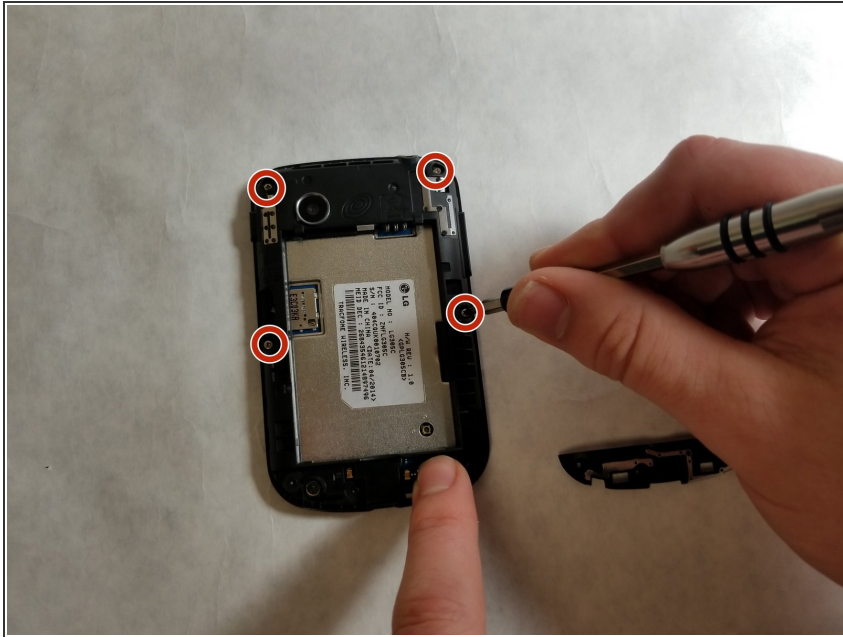
- Remove the three 4 mm screws using a JIS screwdriver with a J000 head from the bottom part of the internal casing.

### Step 4



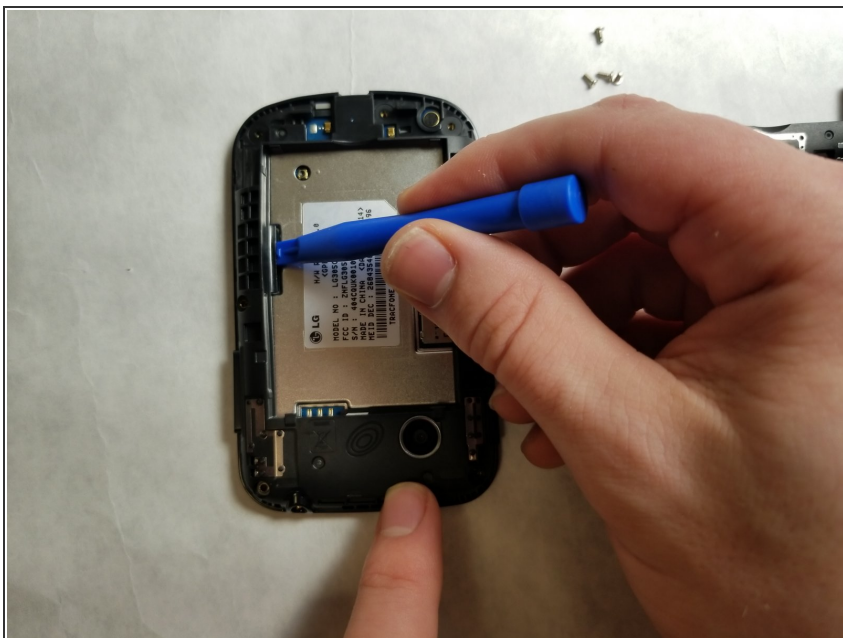
- Pry open the bottom part of the internal casing with the plastic opening tool and remove it.

## Step 5



- Remove the four 4 mm screws using a JIS screwdriver with a J000 head from the top part of the internal casing.

## Step 6



- Pry open the top part of the internal casing with the plastic opening tool and remove it.

To reassemble your device, follow these instructions in reverse order.