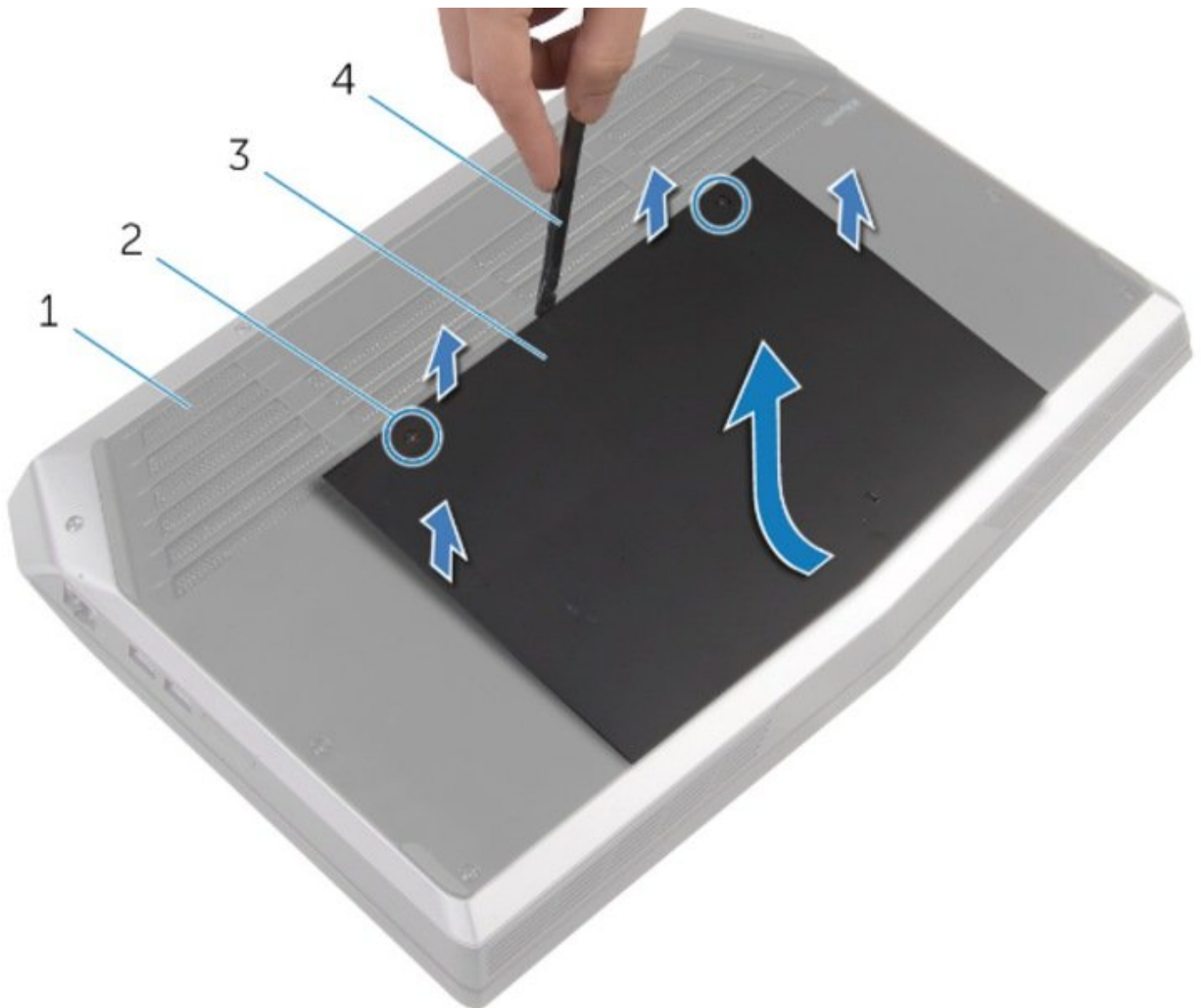




# Dell Alienware 15 Base Panel Replacement

How to remove and replace the base panel of an Alienware 15 inch laptop. This panel protects the RAM, solid state disk, battery, and hard drive.

Written By: William Daniels



## INTRODUCTION

**WARNING :** Before working inside your computer, read the safety information that shipped with your computer and follow the steps in [Before working inside your computer](#). After working inside your computer, follow the instructions in [After working inside your computer](#).

Here's how to remove and replace the base panel of an Alienware 15 inch laptop. You'll need to remove this panel to access the RAM, solid state disk, and hard disk of the laptop. Additionally, the battery can only disconnected and removed from this location. It is not required that you have a spudger, but it will make disassembly slightly easier.

The information and pictures in this guide have been taken from the service manual from this device, listed on the product page. If you need any additional information on disassembling this device, please consult the service manual.

---

### TOOLS:

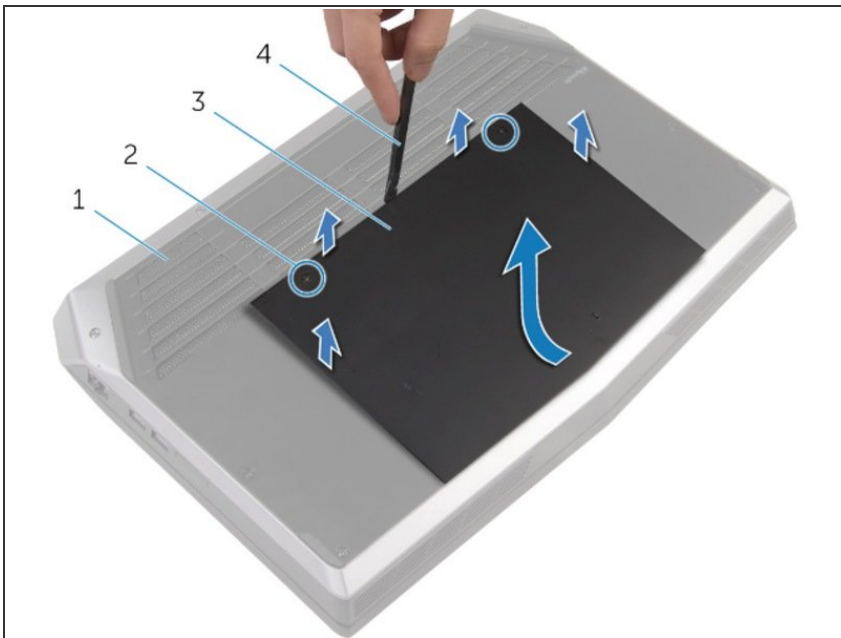
- [Phillips #0 Screwdriver](#) (1)
  - [Spudger](#) (1)
-

## Step 1 — Turn Off and Turn Over the Computer



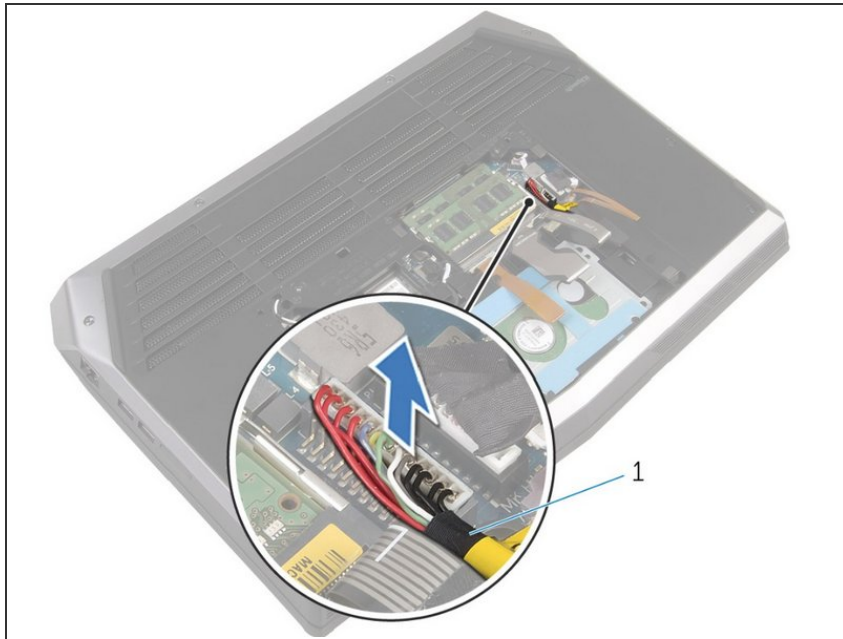
- After turning the computer off, close the display and turn the computer over.

## Step 2 — Remove the Back Panel Screws and Lift



- After the computer base (#1) is facing up, use a Philips screwdriver to remove the two captive screws (#2) which hold the base panel (#3) down.
- Then, use a spudger (#4) to lift up the panel. You can also use your fingernail to lift it as well.
- After the front has been lifted up a bit, the non-screw side of the panel will need to be slid forward a little to finish lifting out the base panel from the computer.

### Step 3 — Optional: Disconnect the Battery



- ① You don't need to disconnect the laptop's battery if you are only replacing the back panel: only perform this step if you will be handling or replacing the electrical components of the computer.
- Disconnect the battery cable from the system board by pulling up on the battery connector (#1).
- Turn the computer back over and open the display to the point where you can press the power button.
- Press and hold the power button for 4 seconds to ground the system board so that you can safely remove components such as the RAM.

To reassemble the computer, follow these instructions in reverse order and screw on the replacement panel instead of the original panel if a new one is to be used.