



Nikon Coolpix S4000 Casing Replacement

Replace the broken or cracked casing of your Nikon Coolpix S4000.

Written By: Matina Newsom



INTRODUCTION

In order to replace anything in the camera, besides the battery or SD card, the camera's casing must be removed. When removing the casing there are a few important factors to keep in mind.

The screws used to hold the casing together are very small, and easy to lose. Keep them in a safe place where you will be able to find them again.

Be gentle when removing the front and back casing from the body of the camera. It is tight around the body and can crack easily if you try to force it apart. Use the spudger if working it apart with your fingers is proving difficult.



TOOLS:

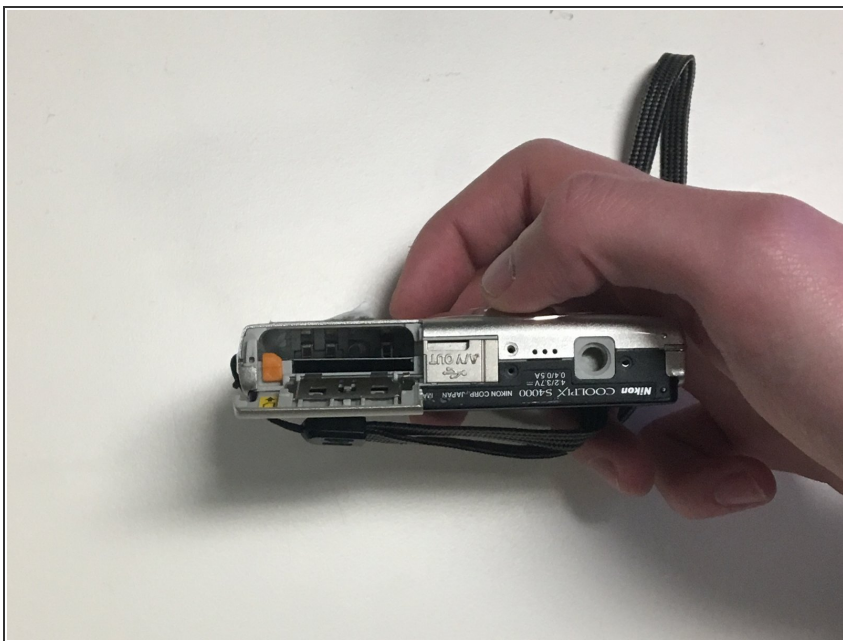
- [Spudger](#) (1)
 - [Phillips #000 Screwdriver](#) (1)
-

Step 1 — Battery



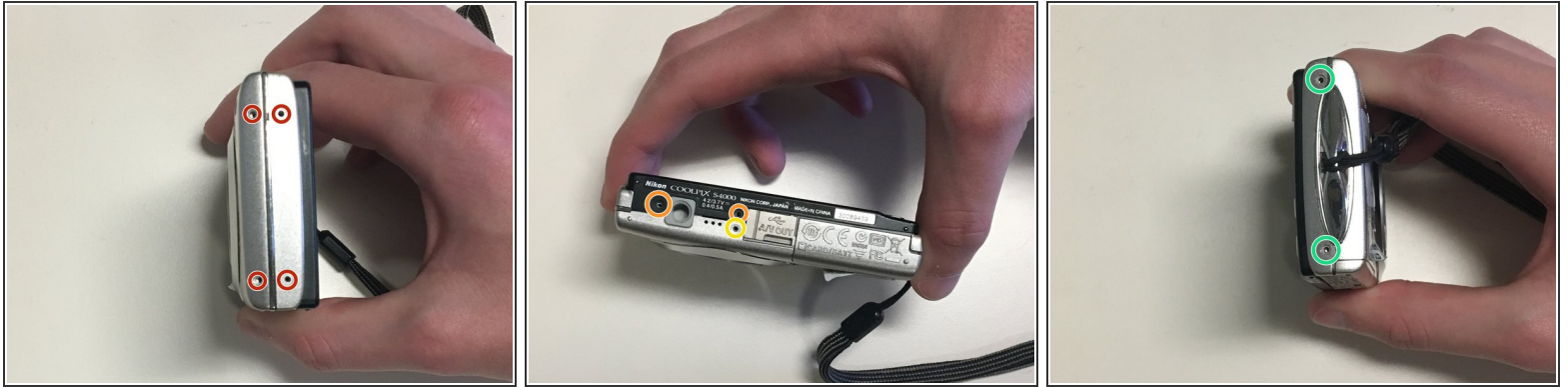
- Slide the battery door open with a finger or thumb and release it so the door opens.

Step 2



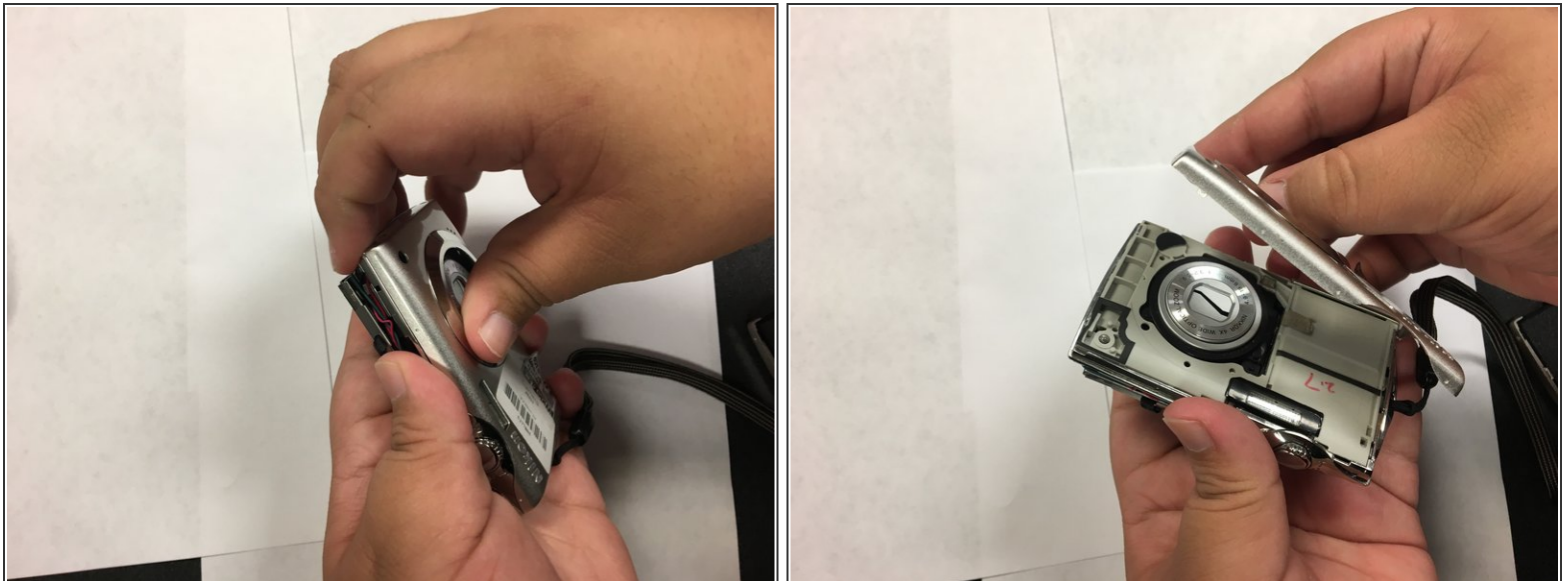
- Push the orange tab back and the battery will pop out.

Step 3 — Casing



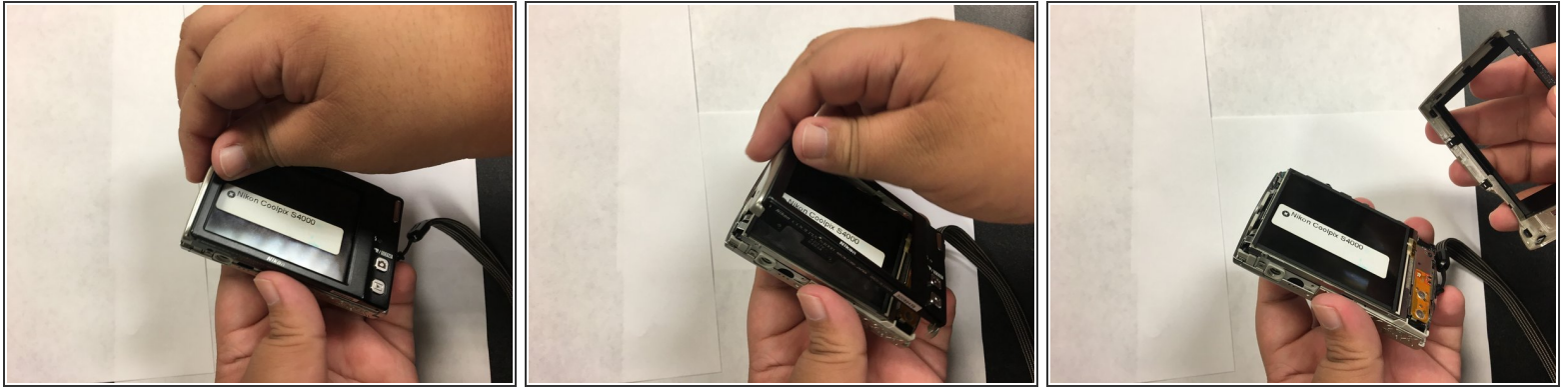
- Remove four 2mm Phillips #000 screws.
- Remove two black 3mm Phillips #000 screws.
- Remove one 4mm Phillips #000 screws.
- Remove two silver 3mm Phillips #000 screws.

Step 4



- Use your fingers, or a spudger, to lift up one end of the casing and then pry the two pieces apart.

Step 5



- Turn the camera over.
- Use your fingers, or spudger, to lift one end of the back casing and pry it apart from back of the camera.

To reassemble your device, follow these instructions in reverse order.

This document was last generated on 2019-08-21 08:30:53 PM.