



Dell Latitude E6420 CD/DVD Drive Replacement

How to replace a Dell Latitude E6420 CD/DVD drive.

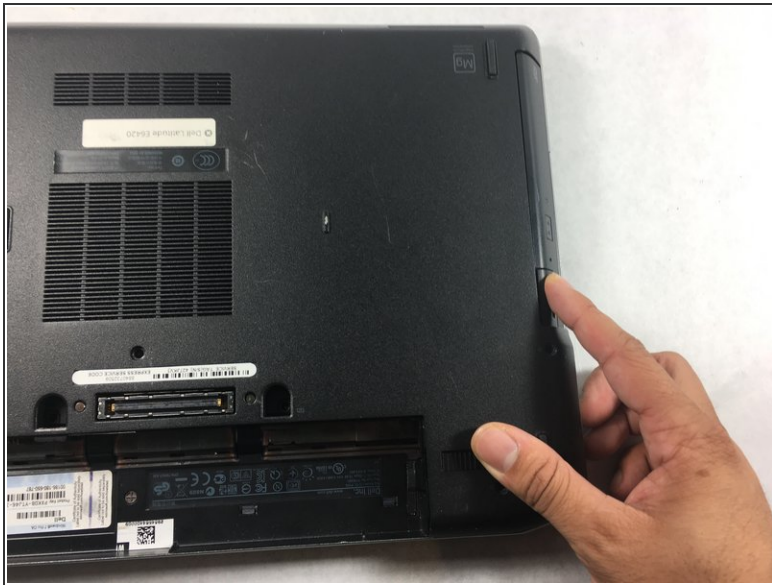
Written By: Madysen Eames



INTRODUCTION

The CD/DVD drive may wear over time and stop recognizing discs. This guide will show the user how to remove the CD/DVD drive from the laptop.

Step 1 — CD/DVD Drive




- Push the button in on the CD/DVD drive to eject the drive.

Step 2



- Slide the drive out of the laptop.

 When removing the drive, keep it flat to prevent damage to anything inside the laptop.

To reassemble your device, follow these instructions in reverse order.