



iBook G3 Clamshell Airport Card Replacement

Written By: iRobot



INTRODUCTION

Install an original Airport 802.11b card internally.



TOOLS:

- [Coin](#) (1)
- [Flathead 3/32" or 2.5 mm Screwdriver](#) (1)



PARTS:

- [Airport Card](#) (1)

Step 1 — Battery



- Use a coin to turn both battery locking screws 90 degrees to the left.
- Remove the battery cover.
- Remove the battery from the computer by pulling up on the plastic tab.

Step 2 — Airport Card



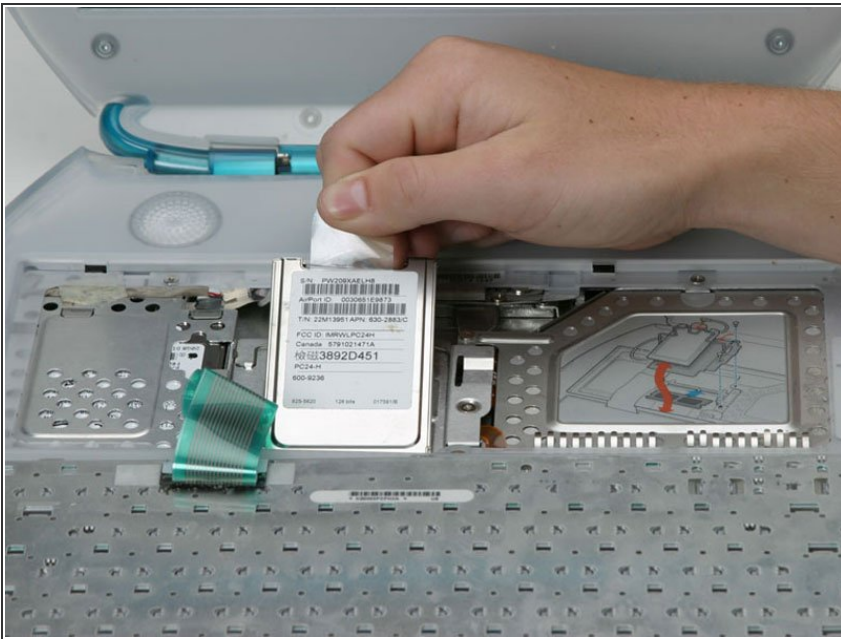
- Pull the keyboard release tabs toward you and lift up on the keyboard until it pops free. Note that the keyboard ribbon is still attached to the logic board, so you cannot completely remove the keyboard yet.

- If the keyboard does not come free, use a small flathead screwdriver to turn the keyboard locking screw

(between F4 and F5 key) 180 degrees in either direction and try again.

- Rotate the keyboard away from the screen and rest it face-down on the trackpad area.

Step 3



- ⓘ If your computer does not have an airport card, you can skip the next two steps.
- Grasp the clear plastic tab on the airport card and pull up and toward the display.

Step 4



- Hold the airport card in one hand and use your other hand to remove the antenna cable.

To reassemble your device, follow these instructions in reverse order.