



Braven BRV-1M Sub-woofer Cone Replacement

If sound coming out of the device is distorted, the sub-woofer may have been damaged. One can follow this guide on how to replace a broken sub-woofer cone.

Written By: Erik Oliva



 **TOOLS:**

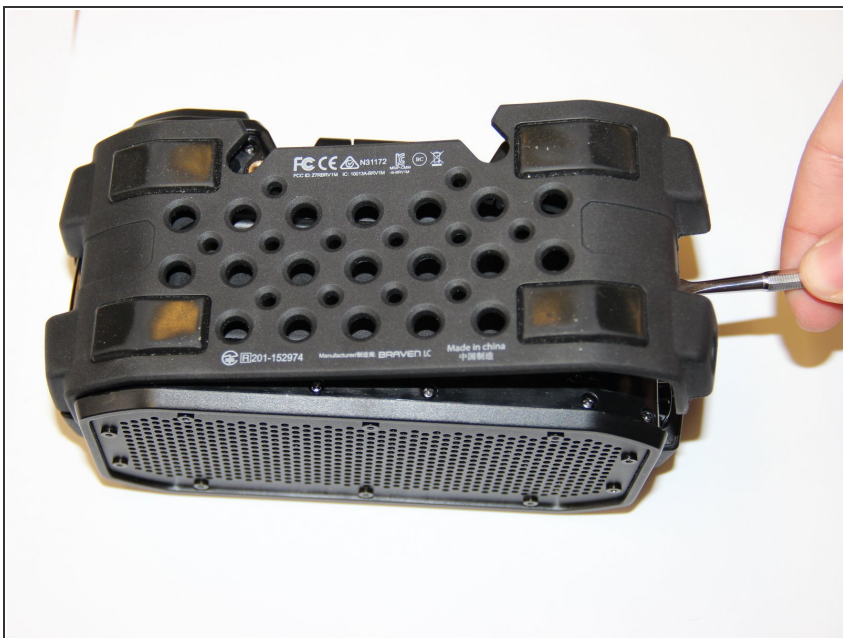
- [64 Bit Driver Kit](#) (1)
 - [Metal Spudger](#) (1)
-

Step 1 — Sub-woofer Cone



- To remove the outer rubber casing use a 3mm Hex bit to remove the 4 large 12mm Hex screws on both sides, found on the bottom part of the device.

Step 2



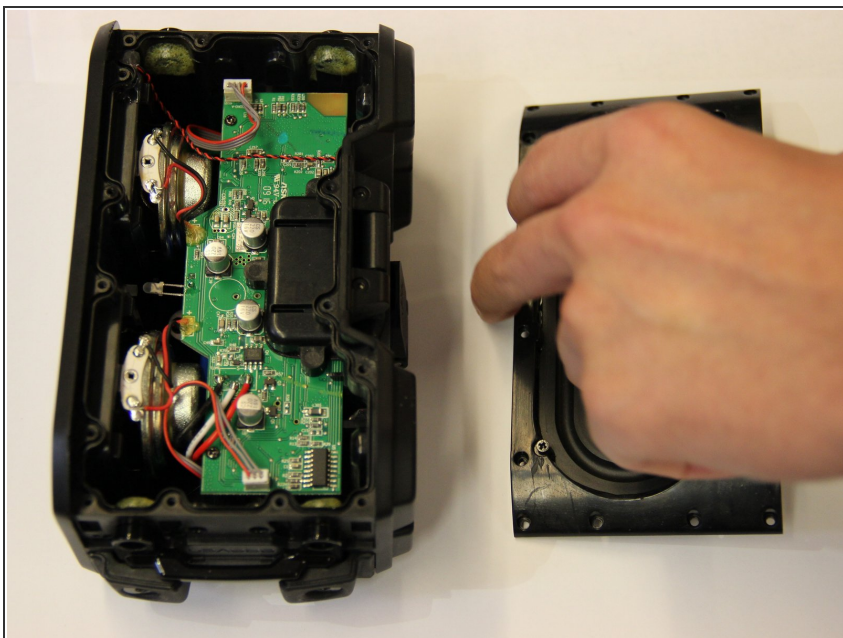
- Using the Metal Spudger, carefully pry each side of the rubber casing away from the device.
- ⓘ A little resistance should be felt, but not enough to bend the spudger.

Step 3



- To remove the hard inner plastic casing, use a Phillips #00 head bit to remove the 16 small 9mm screws surrounding the subwoofer on the top side of the device.

Step 4



- Carefully lift away the broken sub-woofer plate of the device. Replace with functioning sub-woofer plate.

To reassemble your device, follow these instructions in reverse order.

This document was last generated on 2019-08-06 01:15:44 PM.