



Zoomer Meowzies Legs Replacement

To Remove/Replace the legs for cleaning or customization.

Written By: Muataz Alahmadi



INTRODUCTION

This is a guide to replace the legs of the Zoomer Meowzies. Removing the legs is a prerequisite to the replacment guides for the Infrared Sensors, LED Screen “Eyes,” and the Speaker.

TOOLS:

- [Phillips #1 Screwdriver](#) (1)
 - [Triangular headed Screwdriver](#) (1)
-

Step 1 — Legs



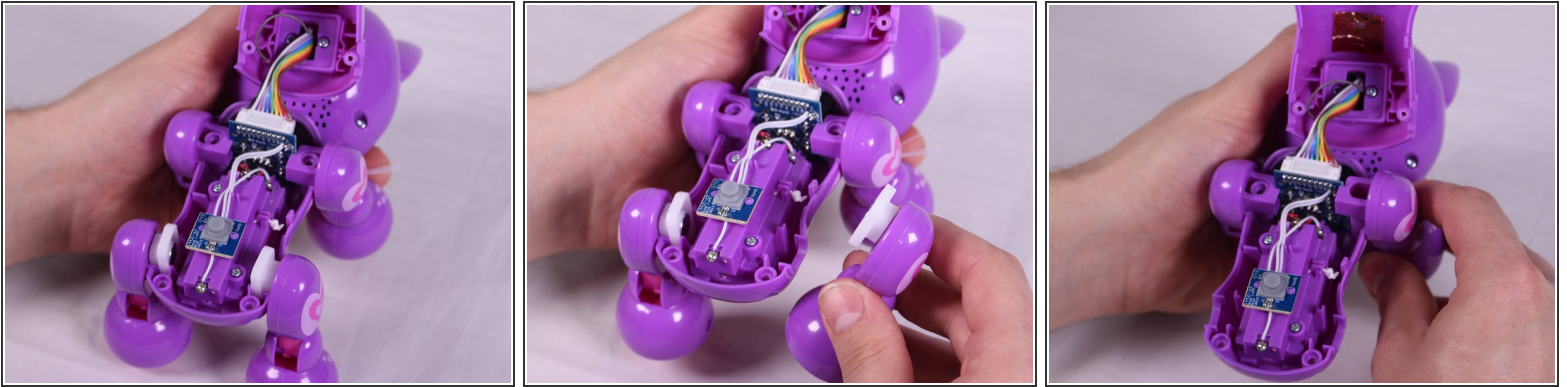
- Using the Triangle driver remove the four 7.5 mm screws.
- ⓘ The two front screws are deeper than the two on the back legs which may cause difficulties. These can be reached by putting the bit in first then carefully putting the driver on slightly (not all the way)

Step 2



- Turn the device so that the the device is on its side.
- Hold the back and belly on the device and gently pull apart.
- ⚠ Pulling with too much force might damage a few cables inside, so caution is needed.

Step 3



- With insides exposed, grab leg and gently pull up and away from the body to detach them. Repeat for all legs needed.

To reassemble your device, follow these instructions in reverse order.