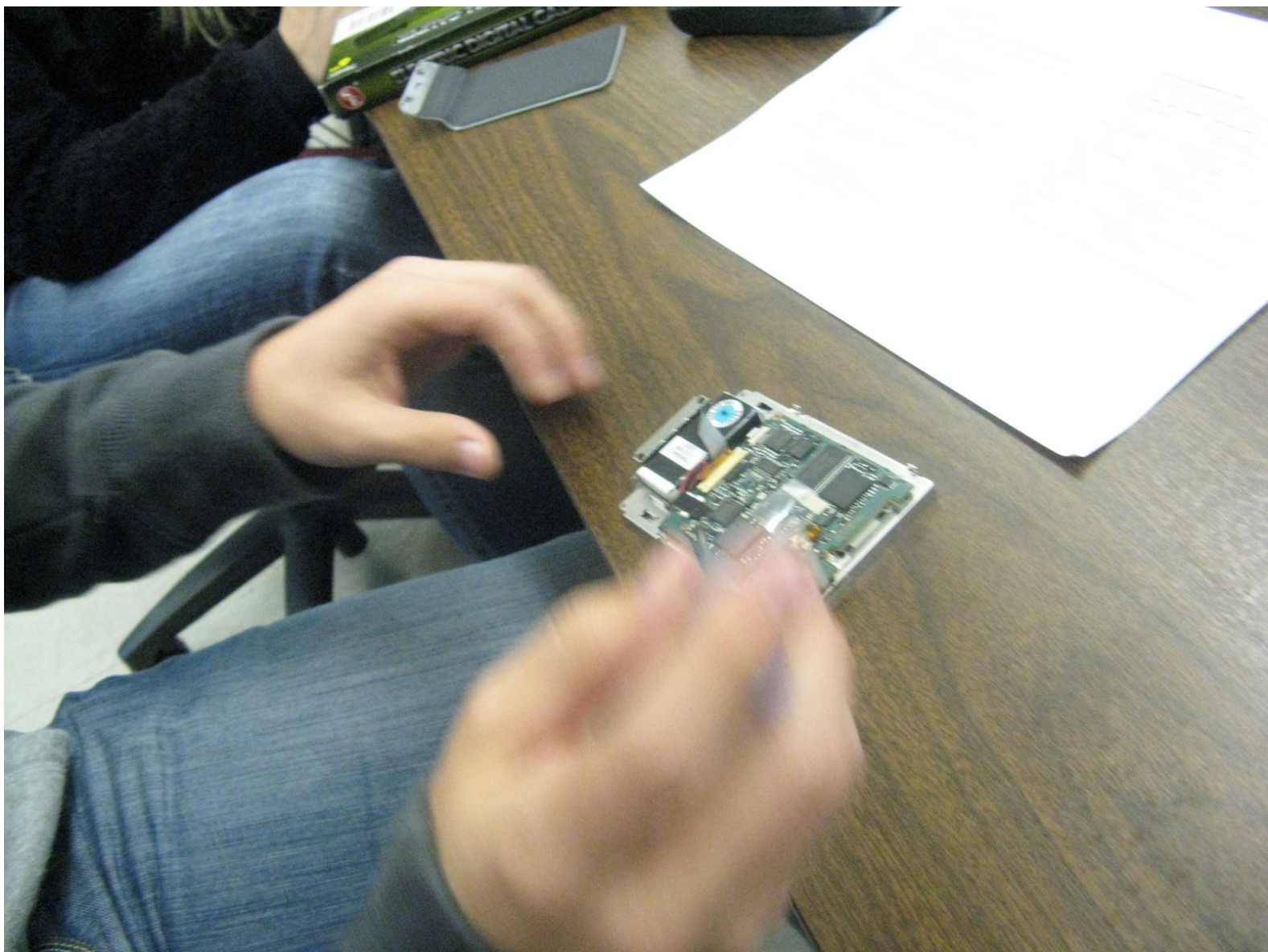




Disassembling Sony Clie PEG-SJ22 Scroll Wheel

Written By: Samantha Taylor

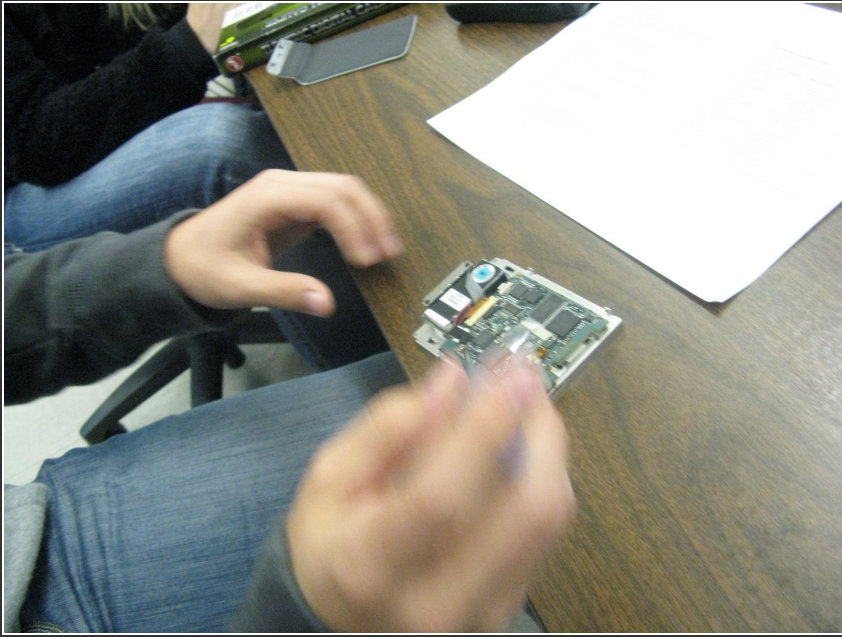




TOOLS:

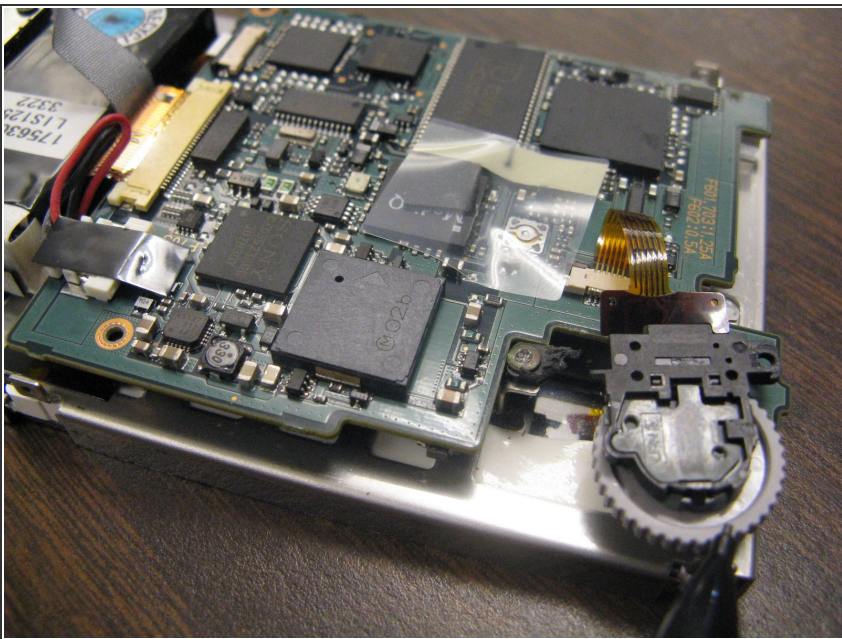
- [64 Bit Driver Kit](#) (1)
-

Step 1 — Disassembling Sony Clie PEG-SJ22 Scroll Wheel



- Unscrew the two screws that hold the scrollwheel to the motherboard.

Step 2



- The scroll wheel should now pop off.

To reassemble your device, follow these instructions in reverse order.