



Samsung Series 9 NP900X3A Back Panel Replacement

This guide will show you how to open and replace your Samsung Series 9 Back Panel step-by-step.

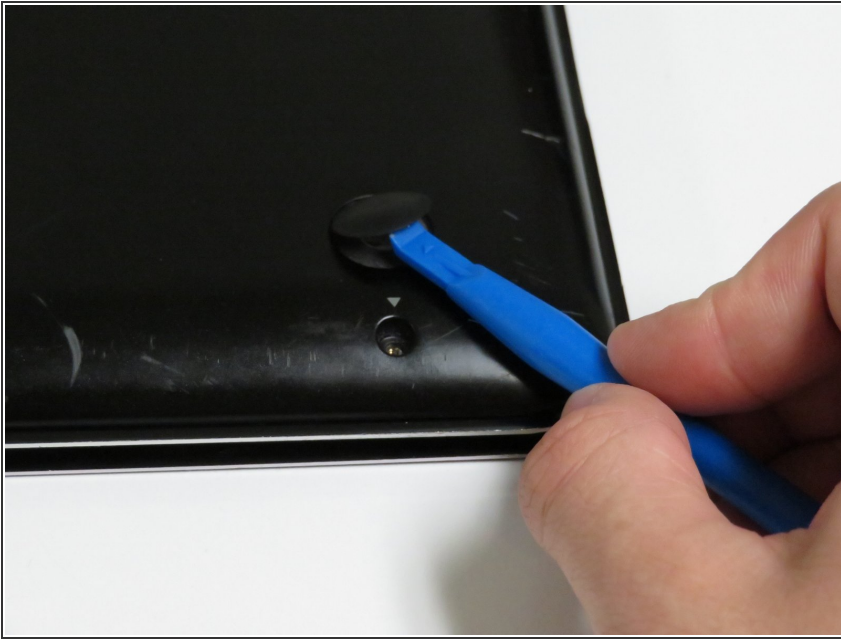
Written By: Zahir Sanchez



 **TOOLS:**

- [iFixit Opening Tools](#) (1)
 - [Phillips #0 Screwdriver](#) (1)
-

Step 1 — Back Panel



- Locate the rubber feet at every corner of the laptop back panel. Use the iFixit prying tool, and break the adhesive between the rubber feet, and the case.
- ⓘ Screws securing the back panel underneath the adhesive will be exposed.
- ★ Removing the rubber feet will weaken the adhesive making reassembly difficult. Apply new adhesive if you choose to place the rubber feet back on to the device.

Step 2




- Use a Phillips #0 screwdriver to remove the ten 0.2mm screws from the bottom cover.
- ⓘ Keep track of the screws and their placement on the laptop. This will help make reassembly easier and more organized.

Step 3



- Find an opening on the back of the laptop. Use the plastic prying tool to help pry open the back panel of the laptop.

 Use both hands when removing the back case cover. Too much force will bend the cover making it difficult to reassemble.

To reassemble your device, follow these instructions in reverse order.